

120V-347V input 0-10V Dimmable Driver for
15W Lotus LED Lights plenum rated models



Project: _____

Location: _____

Qty: _____

Notes: _____

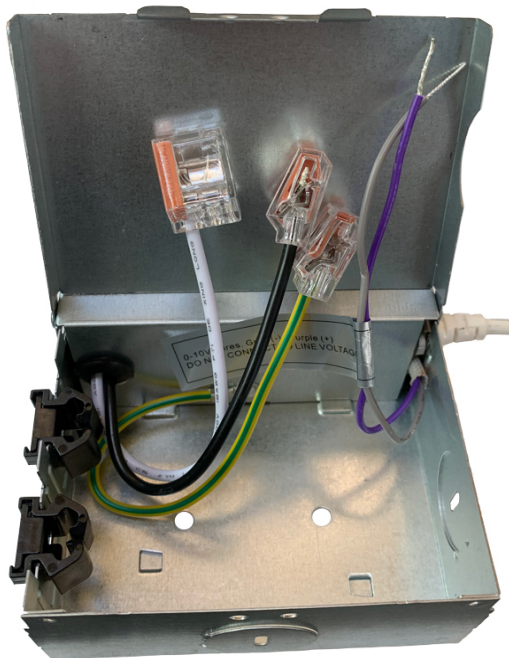
DESCRIPTION

120-347V Input Driver 0-10V Dimmable for Lotus LED Lights plenum rated models with armored cables
Output 18-40 V DC, Constant Current 330 mA, PF > 0.95
Connection box wire capacity: Maximum of 5 No 12 AWG or 8 No 14 AWG

DIMENSIONS: 3 1/2" x 3 1/2" x 1 1/2"

COMPATIBLE FIXTURES

LD4R
LD4S
LD4R-IT
LL4RR
LL4SR

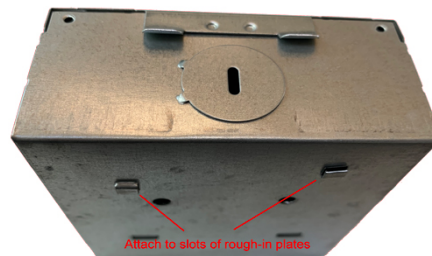


CABLE CONNECTORS

2 knock-outs 7/8"
2 Romex quick connectors

MOUNTING

on Lotus **FRP** plates
on Lotus **RIP** plates
directly on joist



ORDERING GUIDE

cat # **LLL-LD1535TR**

Input: White (Neutral) & Black (Hot) wires with quick connectors. Connect to 120V - 347V AC according to the Dimmer Manufacturer's Instructions.

Output: Armored FT6 / CMP rated cable with metal screw-in connector. Connect to compatible Lotus LED fixture from the list above

0-10V control wires: Grey (-) and Purple (+). Connect to dimming or control system 0-10V only. **DO NOT CONNECT TO LINE VOLTAGE.**
If you short the Grey and Purple wires the fixture would be dimmed to zero.

Warning: This driver is UL / cUL certified to be used only with Lotus LED Lights fixtures.
Connecting it to any other manufacturer's fixtures will void certification and warranty and may cause overheating and fire.