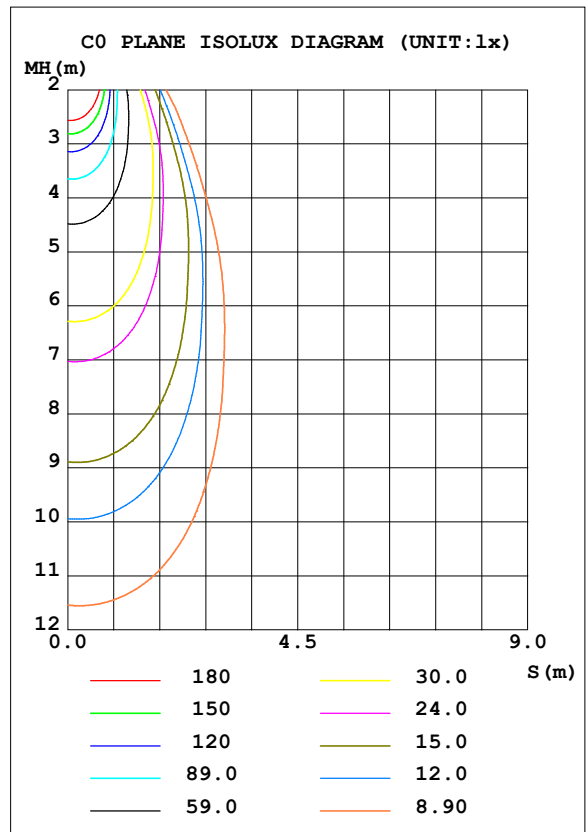
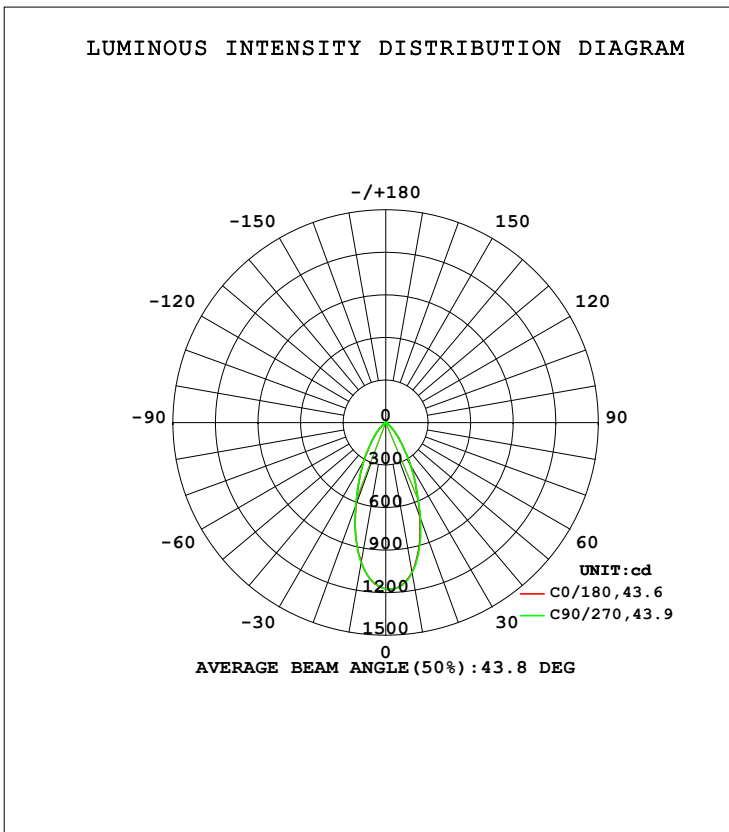


**LUMINAIRE PHOTOMETRIC TEST REPORT**

Test:U:120.22V I:0.1021A P:11.793W PF:0.9603 Freq:59.98Hz Lamp Flux:786.59x1 lm		
NAME: AD-LED-4-S12W-5CCTWH-LREY-SQ	TYPE:	WEIGHT:
SPEC.:2700K 90	DIM.:	SERIAL No.:1
MFR.: ADS	SUR.:	Shielding Angle:

DATA OF LAMP		PHOTOMETRIC DATA Eff: 66.70 lm/W			
AD-LED-4-S12W-5CCTWH-LREY-SQ		I <sub>max</sub> (cd)	1178	S/MH (C0/180)	0.67
NOMINAL POWER (W)	12	LOR (%)	100.0	S/MH (C90/270)	0.67
RATED VOLTAGE (V)	120	TOTAL FLUX (lm)	786.59	η UP, DN (C0-180)	0.0, 52.4
NOMINAL FLUX (lm)	786.59	CIE CLASS	DIRECT	η UP, DN (C180-360)	0.0, 47.6
LAMPS INSIDE	1	η up (%)	0.0	CIBSE SHR NOM	0.75
TEST VOLTAGE (V)	120	η down (%)	100.0	CIBSE SHR MAX	0.75



C Range: 0 - 360DEG  
 C Interval: 22.5DEG  
 Test Speed: HIGH  
 Temperature: 25.3DEG  
 Operators:  
 Test Date: 2021-02-23

γ Range: 0 - 90DEG  
 γ Interval: 1.0DEG  
 Test System: EVERFINE GO-SPEX500\_V1 SYSTEM V2.00.421  
 Humidity: 65.0%  
 Test Distance: 3.080m [K=1.0000]  
 Remarks: Energy Efficient Lighting LTD.

**ZONAL FLUX DIAGRAM**

ZONAL FLUX DIAGRAM:

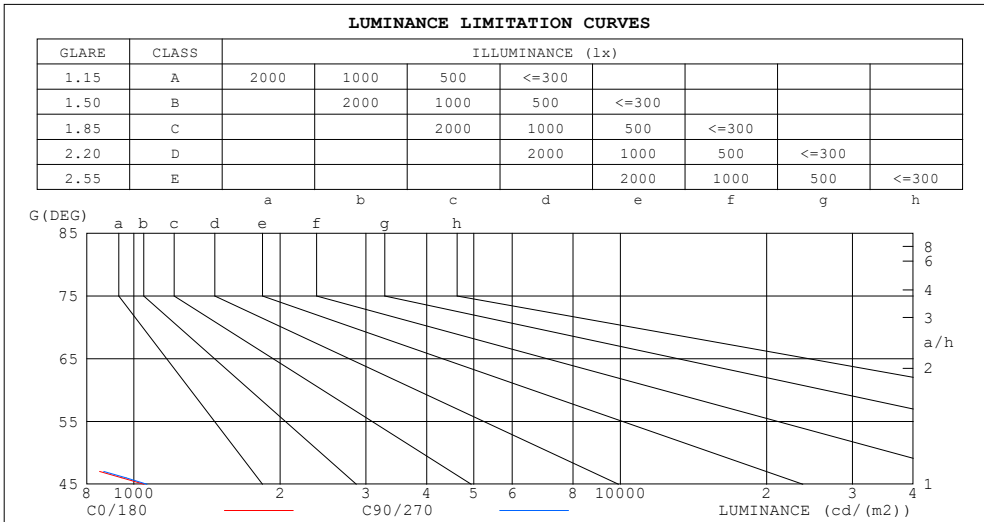
$\gamma$	C0	C45	C90	C135	C180	C225	C270	C315	$\gamma$	$\Phi$ zone	$\Phi$ total	%lum,lamp
10	1071	1086	1075	1045	1000	980.1	1002	1038	0- 10	105.6	105.6	13.4,13.4
20	704.1	718.9	716.2	679.1	617.6	589.2	623.8	673.1	10- 20	238.8	344.3	43.8,43.8
30	360.5	364.8	358.4	336.5	307.0	292.2	310.4	341.5	20- 30	220.4	564.8	71.8,71.8
40	141.1	142.8	139.8	129.9	122.4	116.3	126.7	133.0	30- 40	135.0	699.8	89,89
50	43.60	44.59	45.33	42.34	39.24	36.39	39.17	40.87	40- 50	61.23	761.0	96.7,96.7
60	9.078	8.801	9.692	8.379	7.846	7.594	8.818	7.782	50- 60	18.61	779.6	99.1,99.1
70	2.968	3.035	3.183	3.168	3.132	3.025	3.018	2.959	60- 70	4.928	784.6	99.7,99.7
80	0.6526	0.5943	0.5361	0.6325	0.7197	0.6325	0.5501	0.6112	70- 80	1.807	786.4	100,100
90	0.0102	0.0060	0.0090	0.0044	0.0109	0.0080	0.0127	0.0067	80- 90	0.2252	786.6	100,100
100									90-100			
110									100-110			
120									110-120			
130									120-130			
140									130-140			
150									140-150			
160									150-160			
170									160-170			
180									170-180			
DEG	LUMINOUS INTENSITY:cd									UNIT:lm		

C Range: 0 - 360DEG  
 C Interval: 22.5DEG  
 Test Speed: HIGH  
 Temperature:25.3DEG  
 Operators:  
 Test Date:2021-02-23

$\gamma$  Range: 0 - 90DEG  
 $\gamma$  Interval: 1.0DEG  
 Test System:EVERFINE GO-SPEX500\_V1 SYSTEM V2.00.421  
 Humidity:65.0%  
 Test Distance:3.080m [K=1.0000]  
 Remarks: Energy Efficient Lighting LTD.

**LUMINANCE LIMITATION CURVES**

Test:U:120.22V I:0.1021A P:11.793W PF:0.9603 Freq:59.98Hz Lamp Flux:786.59x1 lm		
NAME: AD-LED-4-S12W-5CCTWH-LREY-SQ	TYPE:	WEIGHT:
SPEC.:2700K 90	DIM.:	SERIAL No.:1
MFR.: ADS	SUR.:	Shielding Angle:



LUMINANCE cd/(m2)		
G (DEG)	C0/180	C90/270
85	18	9
80	34	28
75	60	56
70	79	84
65	93	104
60	165	174
55	310	327
50	617	633
45	1050	1064

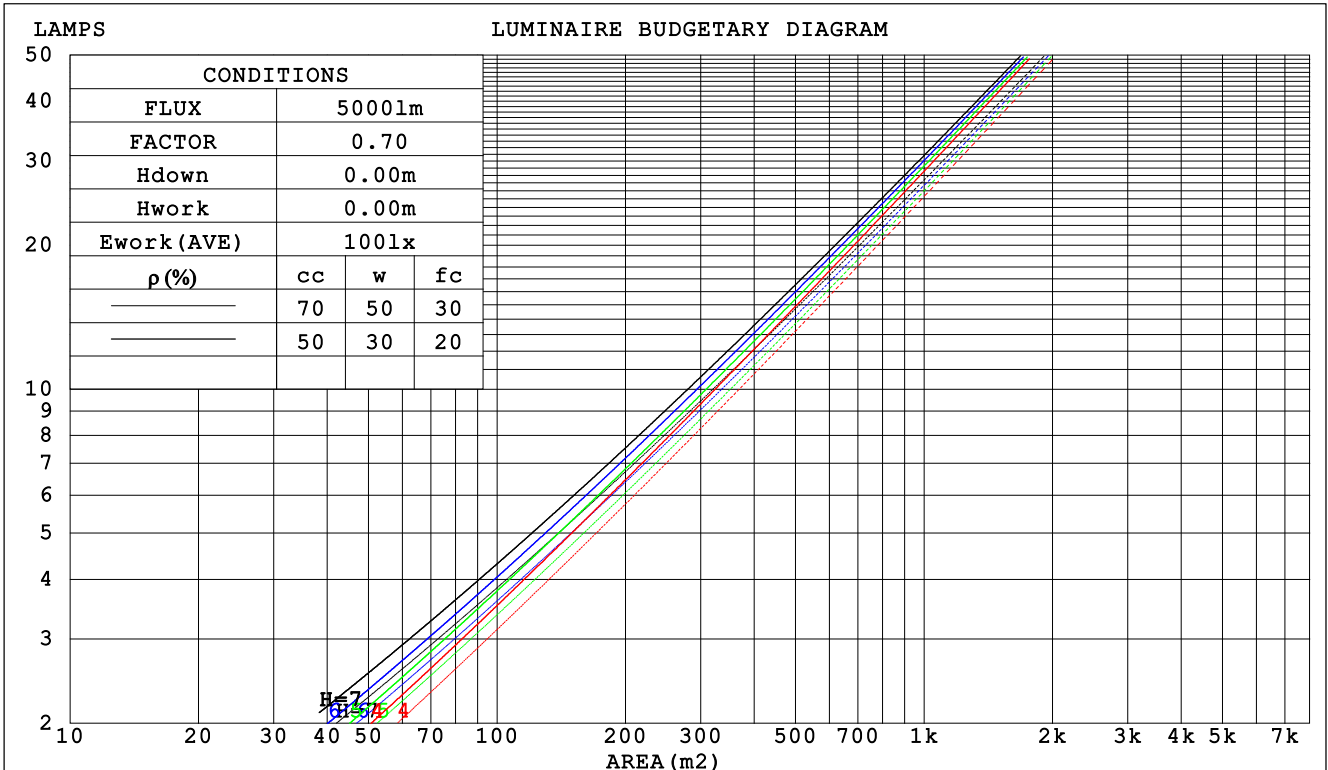
C Range: 0 - 360DEG  
 C Interval: 22.5DEG  
 Test Speed: HIGH  
 Temperature:25.3DEG  
 Operators:  
 Test Date:2021-02-23

γ Range: 0 - 90DEG  
 γ Interval: 1.0DEG  
 Test System:EVERFINE GO-SPEX500\_V1 SYSTEM V2.00.421  
 Humidity:65.0%  
 Test Distance:3.080m [K=1.0000]  
 Remarks: Energy Efficient Lighting LTD.

CU AND LUMINAIRE BUDGETARY ESTIMATE DIAGRAM

Test:U:120.22V I:0.1021A P:11.793W PF:0.9603 Freq:59.98Hz Lamp Flux:786.59x1 lm		
NAME: AD-LED-4-S12W-5CCTWH-LREY-SQ	TYPE:	WEIGHT:
SPEC.:2700K 90	DIM.:	SERIAL No.:1
MFR.: ADS	SUR.:	Shielding Angle:

$\rho_{cc}$	80%			70%			50%			30%			10%			0
$\rho_w$	50%	30%	10%	50%	30%	10%	50%	30%	10%	50%	30%	10%	50%	30%	10%	0
$\rho_{fc}$	20%			20%			20%			20%			20%			0
RCR	RCR:Room Cavity Ratio															
	Coefficients of Utilization(CU)															
0.0	1.19	1.19	1.19	1.16	1.16	1.16	1.11	1.11	1.11	1.06	1.06	1.06	1.02	1.02	1.02	.00
1.0	1.11	1.08	1.06	1.09	1.06	1.04	1.05	1.03	1.01	1.01	.99	.98	.97	.96	.95	.94
2.0	1.03	.99	.96	1.01	.98	.95	.98	.95	.93	.95	.93	.91	.92	.90	.89	.87
3.0	.96	.91	.87	.95	.90	.87	.92	.88	.85	.90	.87	.84	.88	.85	.83	.81
4.0	.90	.85	.80	.89	.84	.80	.87	.82	.79	.85	.81	.78	.83	.80	.77	.76
5.0	.84	.79	.74	.84	.78	.74	.82	.77	.73	.80	.76	.73	.79	.75	.72	.71
6.0	.79	.74	.69	.79	.73	.69	.77	.72	.69	.76	.71	.68	.74	.71	.68	.66
7.0	.75	.69	.65	.74	.69	.65	.73	.68	.64	.72	.67	.64	.71	.67	.64	.62
8.0	.71	.65	.61	.70	.65	.61	.69	.64	.61	.68	.64	.60	.67	.63	.60	.59
9.0	.67	.61	.57	.67	.61	.57	.66	.61	.57	.65	.60	.57	.64	.60	.57	.55
10.0	.64	.58	.54	.63	.58	.54	.62	.57	.54	.62	.57	.54	.61	.57	.54	.52



C Range: 0 - 360DEG  
 C Interval: 22.5DEG  
 Test Speed: HIGH  
 Temperature:25.3DEG  
 Operators:  
 Test Date:2021-02-23

$\gamma$  Range: 0 - 90DEG  
 $\gamma$  Interval: 1.0DEG  
 Test System:EVERFINE GO-SPEX500\_V1 SYSTEM V2.00.421  
 Humidity:65.0%  
 Test Distance:3.080m [K=1.0000]  
 Remarks: Energy Efficient Lighting LTD.

WEC AND CCEC

Test:U:120.22V I:0.1021A P:11.793W PF:0.9603 Freq:59.98Hz Lamp Flux:786.59x1 lm		
NAME: AD-LED-4-S12W-5CCTWH-LREY-SQ	TYPE:	WEIGHT:
SPEC.:2700K 90	DIM.:	SERIAL No.:1
MFR.: ADS	SUR.:	Shielding Angle:

ρcc	80%			70%			50%			30%			10%			0
ρw	50%	30%	10%	50%	30%	10%	50%	30%	10%	50%	30%	10%	50%	30%	10%	0
ρfc	20%			20%			20%			20%			20%			0
RCR	RCR:Room Cavity Ratio						Wall Exitance Coefficients (WEC)									
0.0																
1.0	.178	.101	.032	.171	.097	.031	.158	.091	.029	.147	.085	.027	.136	.079	.025	
2.0	.170	.093	.029	.165	.091	.028	.154	.086	.027	.144	.081	.025	.135	.076	.024	
3.0	.162	.086	.026	.157	.084	.025	.148	.080	.024	.140	.077	.023	.132	.073	.023	
4.0	.154	.080	.024	.150	.078	.023	.142	.075	.023	.135	.072	.022	.128	.070	.021	
5.0	.147	.075	.022	.143	.073	.021	.136	.071	.021	.130	.069	.020	.124	.066	.020	
6.0	.140	.070	.020	.136	.069	.020	.131	.067	.019	.125	.065	.019	.120	.063	.019	
7.0	.133	.066	.019	.130	.065	.019	.125	.063	.018	.120	.062	.018	.116	.060	.018	
8.0	.127	.062	.017	.125	.061	.017	.120	.060	.017	.116	.059	.017	.111	.057	.017	
9.0	.122	.059	.016	.120	.058	.016	.115	.057	.016	.111	.056	.016	.108	.055	.016	
10.0	.117	.056	.016	.115	.055	.015	.111	.054	.015	.107	.053	.015	.104	.052	.015	

ρcc	80%			70%			50%			30%			10%			0
ρw	50%	30%	10%	50%	30%	10%	50%	30%	10%	50%	30%	10%	50%	30%	10%	0
ρfc	20%			20%			20%			20%			20%			0
RCR	RCR:Room Cavity Ratio						Ceiling Cavity Exitance Coefficients (CCEC)									
0.0	.190	.190	.190	.163	.163	.163	.111	.111	.111	.064	.064	.064	.020	.020	.020	
1.0	.171	.157	.145	.146	.135	.125	.100	.093	.086	.058	.054	.050	.018	.017	.016	
2.0	.156	.132	.113	.134	.114	.097	.092	.079	.068	.053	.046	.040	.017	.015	.013	
3.0	.144	.114	.090	.123	.098	.078	.085	.068	.054	.049	.040	.032	.016	.013	.011	
4.0	.133	.099	.072	.114	.085	.063	.079	.060	.044	.046	.035	.026	.015	.011	.009	
5.0	.125	.087	.060	.107	.075	.052	.074	.053	.037	.043	.031	.022	.014	.010	.007	
6.0	.117	.078	.050	.101	.068	.043	.069	.047	.031	.040	.028	.018	.013	.009	.006	
7.0	.111	.070	.042	.095	.061	.037	.066	.043	.026	.038	.025	.015	.012	.008	.005	
8.0	.105	.064	.036	.090	.056	.032	.062	.039	.022	.036	.023	.013	.012	.008	.004	
9.0	.100	.059	.031	.086	.051	.027	.060	.036	.019	.035	.021	.012	.011	.007	.004	
10.0	.095	.055	.028	.082	.047	.024	.057	.033	.017	.033	.020	.010	.011	.006	.003	

C Range: 0 - 360DEG  
 C Interval: 22.5DEG  
 Test Speed: HIGH  
 Temperature:25.3DEG  
 Operators:  
 Test Date:2021-02-23

γ Range: 0 - 90DEG  
 γ Interval: 1.0DEG  
 Test System:EVERFINE GO-SPEX500\_V1 SYSTEM V2.00.421  
 Humidity:65.0%  
 Test Distance:3.080m [K=1.0000]  
 Remarks: Energy Efficient Lighting LTD.

**UGR(Unified Glare Rating) Table**

Test:U:120.22V I:0.1021A P:11.793W PF:0.9603 Freq:59.98Hz Lamp Flux:786.59x1 lm		
NAME: AD-LED-4-S12W-5CCTWH-LREY-SQ	TYPE:	WEIGHT:
SPEC.:2700K 90	DIM.:	SERIAL No.:1
MFR.: ADS	SUR.:	Shielding Angle:

ceiling/cavity	0.7	0.7	0.5	0.5	0.3	0.7	0.7	0.5	0.5	0.3
walls	0.5	0.3	0.5	0.3	0.3	0.5	0.3	0.5	0.3	0.3
working plane	0.2	0.2	0.2	0.2	0.2	0.2	0.2	0.2	0.2	0.2
Room dimensions	Viewed crosswise					Viewed endwise				
x = 2H y = 2H	8.7	9.7	8.9	9.8	10.0	8.8	9.7	9.0	9.9	10.1
3H	8.6	9.5	8.8	9.7	9.9	8.7	9.5	8.9	9.7	9.9
4H	8.5	9.3	8.8	9.6	9.8	8.6	9.4	8.9	9.6	9.8
6H	8.4	9.2	8.7	9.4	9.7	8.5	9.3	8.8	9.5	9.8
8H	8.4	9.1	8.7	9.4	9.6	8.5	9.2	8.8	9.4	9.7
12H	8.3	9.1	8.7	9.3	9.6	8.4	9.1	8.7	9.4	9.7
4H 2H	8.5	9.3	8.8	9.6	9.8	8.6	9.4	8.9	9.6	9.8
3H	8.4	9.1	8.7	9.4	9.6	8.5	9.2	8.8	9.4	9.7
4H	8.3	9.0	8.7	9.3	9.6	8.4	9.0	8.7	9.3	9.6
6H	8.2	8.8	8.6	9.1	9.5	8.3	8.9	8.7	9.2	9.5
8H	8.2	8.7	8.6	9.1	9.4	8.2	8.8	8.6	9.1	9.5
12H	8.1	8.6	8.5	9.0	9.4	8.2	8.7	8.6	9.0	9.4
8H 4H	8.2	8.7	8.6	9.1	9.4	8.2	8.8	8.6	9.1	9.5
6H	8.1	8.5	8.5	8.9	9.3	8.2	8.6	8.6	9.0	9.4
8H	8.0	8.4	8.5	8.8	9.3	8.1	8.5	8.5	8.9	9.3
12H	8.0	8.3	8.5	8.8	9.2	8.0	8.4	8.5	8.8	9.3
12H 4H	8.1	8.6	8.5	9.0	9.4	8.2	8.7	8.6	9.0	9.4
6H	8.0	8.4	8.5	8.8	9.3	8.1	8.5	8.5	8.9	9.3
8H	8.0	8.3	8.5	8.8	9.2	8.0	8.4	8.5	8.8	9.3
Variations with the observer position at spacings:										
S = 1.0H	+ 2.4 / - 7.5					+ 2.3 / - 7.4				
1.5H	+ 3.6 / - 5.8					+ 3.4 / - 5.7				
2.0H	+ 5.2 / - 7.1					+ 5.1 / - 7.0				

CIE Pub.117, 786.6 lm Total Lamp Luminous Flux Correct (8log(F/F0) = -0.8)  
 Area: 0.111111 m2

C Range: 0 - 360DEG  
 C Interval: 22.5DEG  
 Test Speed: HIGH  
 Temperature:25.3DEG  
 Operators:  
 Test Date:2021-02-23

γ Range: 0 - 90DEG  
 γ Interval: 1.0DEG  
 Test System:EVERFINE GO-SPEX500\_V1 SYSTEM V2.00.421  
 Humidity:65.0%  
 Test Distance:3.080m [K=1.0000]  
 Remarks: Energy Efficient Lighting LTD.

**UTILIZATION FACTORS TABLE**

Test:U:120.22V I:0.1021A P:11.793W PF:0.9603 Freq:59.98Hz Lamp Flux:786.59x1 lm		
NAME: AD-LED-4-S12W-5CCTWH-LREY-SQ	TYPE:	WEIGHT:
SPEC.:2700K 90	DIM.:	SERIAL No.:1
MFR.: ADS	SUR.:	Shielding Angle:

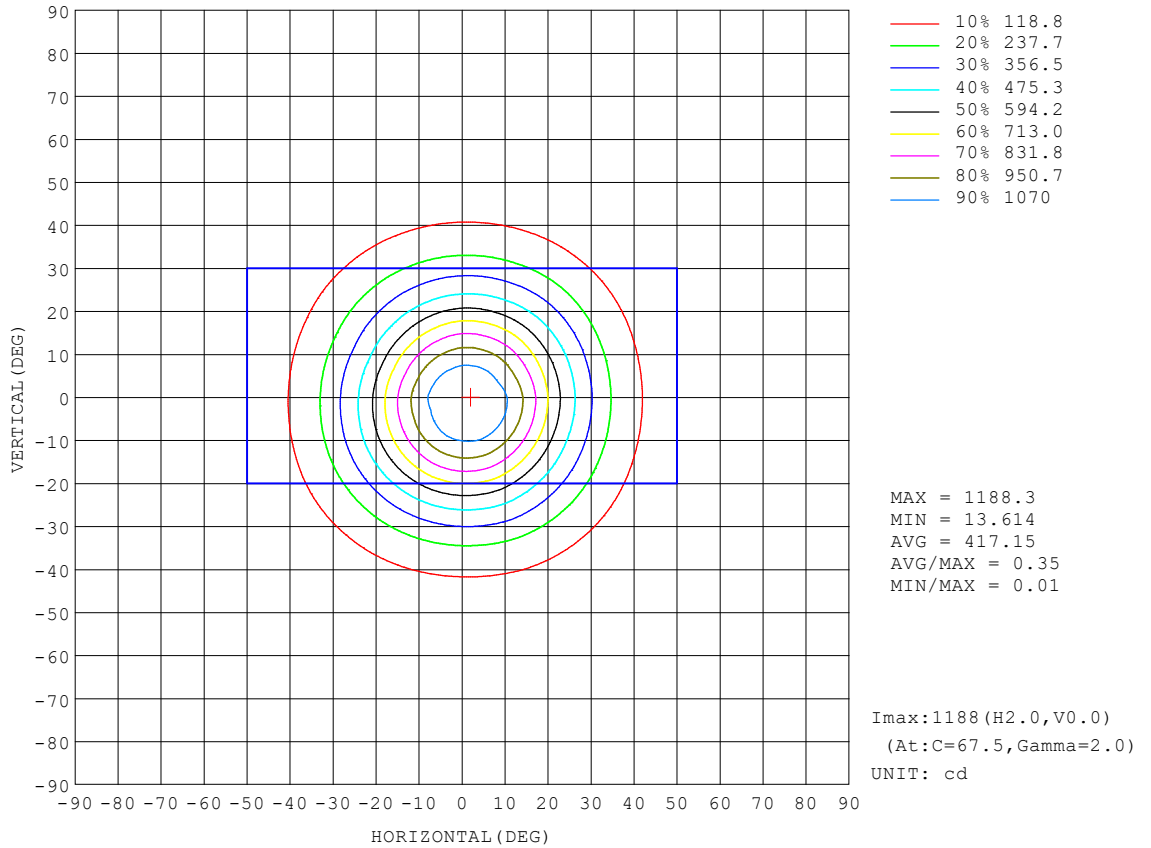
REFLECTANCE										
Ceiling	0.8	0.8	0.8	0.7	0.7	0.7	0.5	0.5	0.5	0
Walls	0.7	0.5	0.3	0.7	0.5	0.3	0.7	0.5	0.3	0
Working plane	0.2	0.2	0.2	0.2	0.2	0.2	0.2	0.2	0.2	0
ROOM INDEX	UTILIZATION FACTORS (PERCENT) $k(RI) \times RCR = 5$									
k = 0.60	85	78	74	84	77	73	83	77	73	70
0.80	92	86	82	92	86	82	91	85	82	78
1.00	98	92	88	97	91	87	95	91	87	83
1.25	102	96	93	101	96	92	99	95	91	87
1.50	105	100	96	104	99	96	101	98	95	90
2.00	108	103	100	106	102	99	104	100	98	92
2.50	110	106	102	108	104	102	105	102	100	94
3.00	111	108	105	109	106	104	106	104	102	95
4.00	113	110	108	111	109	107	108	106	104	97
5.00	115	112	110	112	110	109	108	107	106	98
ROOM INDEX	UF(total)									Direct
According to DIN EN 13032-2 2004			Suspended				SHRNOM = 1.25			

C Range: 0 - 360DEG  
 C Interval: 22.5DEG  
 Test Speed: HIGH  
 Temperature:25.3DEG  
 Operators:  
 Test Date:2021-02-23

$\gamma$  Range: 0 - 90DEG  
 $\gamma$  Interval: 1.0DEG  
 Test System:EVERFINE GO-SPEX500\_V1 SYSTEM V2.00.421  
 Humidity:65.0%  
 Test Distance:3.080m [K=1.0000]  
 Remarks: Energy Efficient Lighting LTD.

**ISOCANDELA DIAGRAM**

Test:U:120.22V I:0.1021A P:11.793W PF:0.9603 Freq:59.98Hz Lamp Flux:786.59x1 lm		
NAME: AD-LED-4-S12W-5CCTWH-LREY-SQ	TYPE:	WEIGHT:
SPEC.:2700K 90	DIM.:	SERIAL No.:1
MFR.: ADS	SUR.:	Shielding Angle:



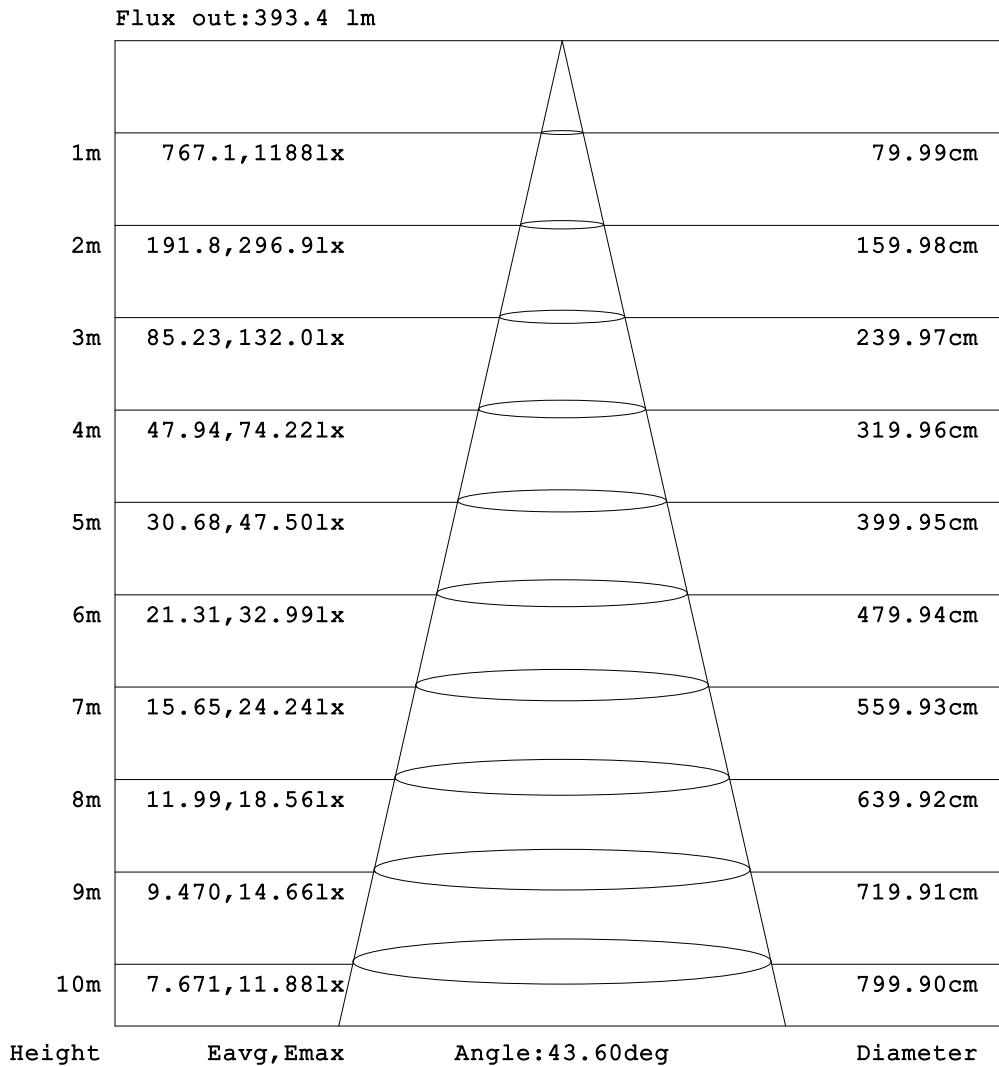
C Range: 0 - 360DEG  
 C Interval: 22.5DEG  
 Test Speed: HIGH  
 Temperature:25.3DEG  
 Operators:  
 Test Date:2021-02-23

γ Range: 0 - 90DEG  
 γ Interval: 1.0DEG  
 Test System:EVERFINE GO-SPEX500\_V1 SYSTEM V2.00.421  
 Humidity:65.0%  
 Test Distance:3.080m [K=1.0000]  
 Remarks: Energy Efficient Lighting LTD.



**AAI Figure**

Test:U:120.22V I:0.1021A P:11.793W PF:0.9603 Freq:59.98Hz Lamp Flux:786.59x1 lm		
NAME: AD-LED-4-S12W-5CCTWH-LREY-SQ	TYPE:	WEIGHT:
SPEC.:2700K 90	DIM.:	SERIAL No.:1
MFR.: ADS	SUR.:	Shielding Angle:



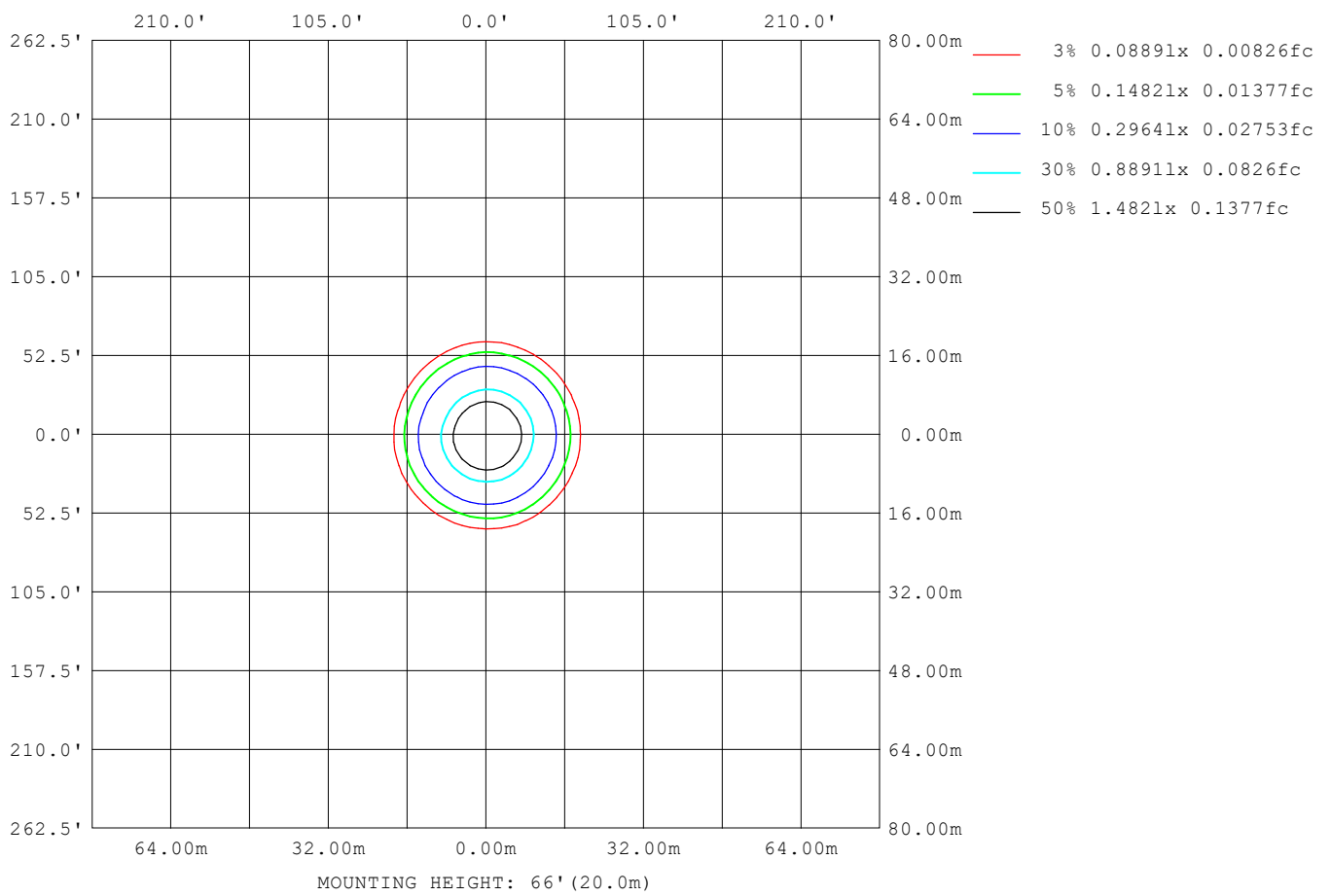
Note:The Curves indicate the illuminated area and the average illumination when the luminaire is at different distance.

C Range: 0 - 360DEG  
 C Interval: 22.5DEG  
 Test Speed: HIGH  
 Temperature:25.3DEG  
 Operators:  
 Test Date:2021-02-23

γ Range: 0 - 90DEG  
 γ Interval: 1.0DEG  
 Test System:EVERFINE GO-SPEX500\_V1 SYSTEM V2.00.421  
 Humidity:65.0%  
 Test Distance:3.080m [K=1.0000]  
 Remarks: Energy Efficient Lighting LTD.

**ISOLUX DIAGRAM**

Test:U:120.22V I:0.1021A P:11.793W PF:0.9603 Freq:59.98Hz Lamp Flux:786.59x1 lm		
NAME: AD-LED-4-S12W-5CCTWH-LREY-SQ	TYPE:	WEIGHT:
SPEC.:2700K 90	DIM.:	SERIAL No.:1
MFR.: ADS	SUR.:	Shielding Angle:



C Range: 0 - 360DEG  
 C Interval: 22.5DEG  
 Test Speed: HIGH  
 Temperature:25.3DEG  
 Operators:  
 Test Date:2021-02-23

γ Range: 0 - 90DEG  
 γ Interval: 1.0DEG  
 Test System:EVERFINE GO-SPEX500\_V1 SYSTEM V2.00.421  
 Humidity:65.0%  
 Test Distance:3.080m [K=1.0000]  
 Remarks: Energy Efficient Lighting LTD.

**LED Avg.L Report**

Test:U:120.22V I:0.1021A P:11.793W PF:0.9603 Freq:59.98Hz Lamp Flux:786.59x1 lm		
NAME: AD-LED-4-S12W-5CCTWH-LREY-SQ	TYPE:	WEIGHT:
SPEC.:2700K 90	DIM.:	SERIAL No.:1
MFR.: ADS	SUR.:	Shielding Angle:

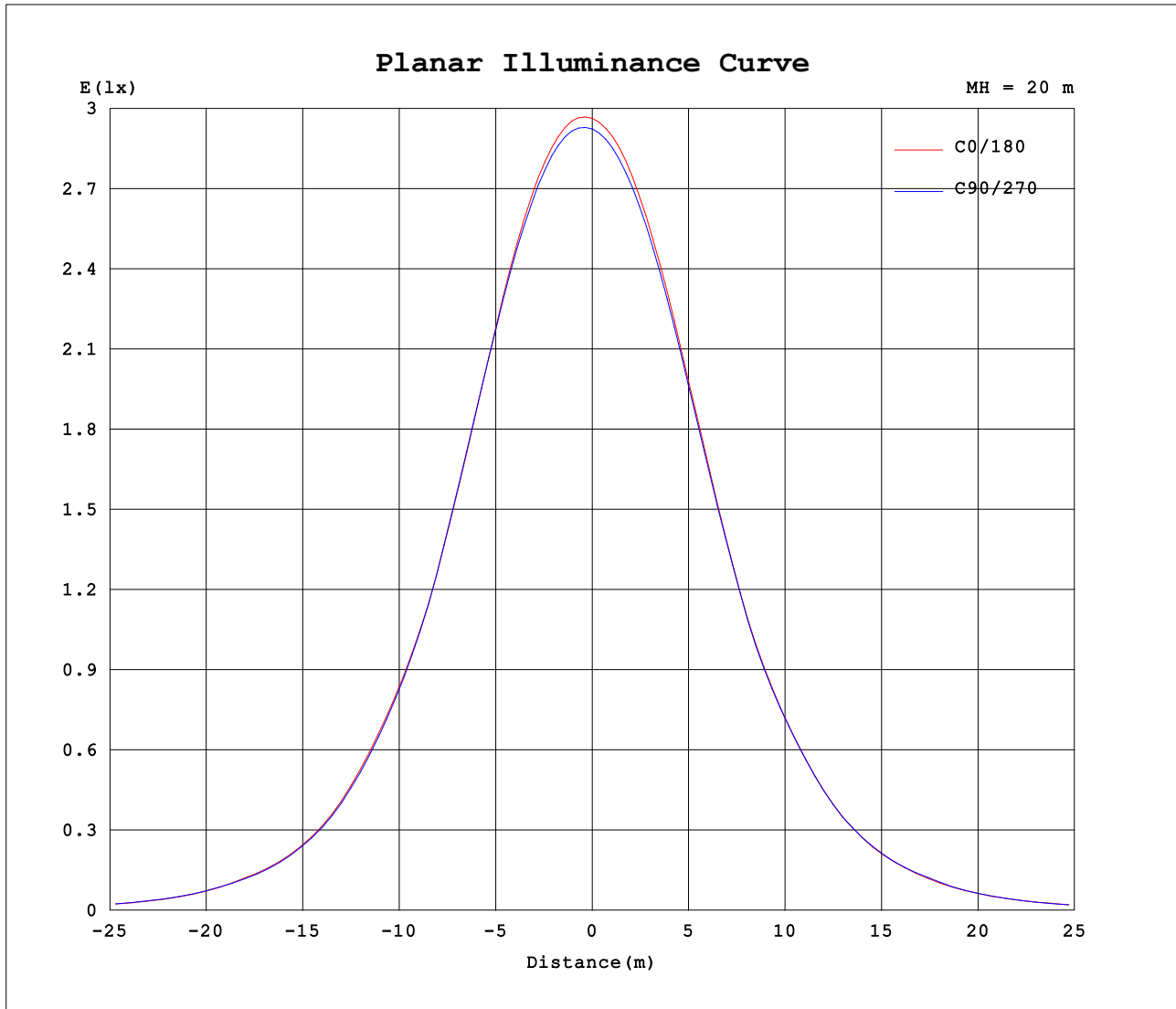
AvgL	cd/m2
L_0~180 (65) av	93
L_0~180 (75) av	61
L_0~180 (85) av	19
L_90~270 (65) av	99
L_90~270 (75) av	56
L_90~270 (85) av	9
L_45 (65) av	94
L_45 (75) av	60
L_45 (85) av	14

Standard: GB/T 29293-2012

C Range: 0 - 360DEG  
 C Interval: 22.5DEG  
 Test Speed: HIGH  
 Temperature:25.3DEG  
 Operators:  
 Test Date:2021-02-23

γ Range: 0 - 90DEG  
 γ Interval: 1.0DEG  
 Test System:EVERFINE GO-SPEX500\_V1 SYSTEM V2.00.421  
 Humidity:65.0%  
 Test Distance:3.080m [K=1.0000]  
 Remarks: Energy Efficient Lighting LTD.

**Planar Illuminance Curve**



C Range: 0 - 360DEG  
 C Interval: 22.5DEG  
 Test Speed: HIGH  
 Temperature: 25.3DEG  
 Operators:  
 Test Date: 2021-02-23

γ Range: 0 - 90DEG  
 γ Interval: 1.0DEG  
 Test System: EVERFINE GO-SPEX500\_V1 SYSTEM V2.00.421  
 Humidity: 65.0%  
 Test Distance: 3.080m [K=1.0000]  
 Remarks: Energy Efficient Lighting LTD.

LUMINOUS DISTRIBUTION INTENSITY DATA

Test:U:120.22V I:0.1021A P:11.793W PF:0.9603 Freq:59.98Hz Lamp Flux:786.59x1 lm		
NAME: AD-LED-4-S12W-5CCTWH-LREY-SQ	TYPE:	WEIGHT:
SPEC.:2700K 90	DIM.:	SERIAL No.:1
MFR.: ADS	SUR.:	Shielding Angle:

Table--1

UNIT: cd

C (DEG) \ γ (DEG)	0	22.5	45	67.5	90	112.5	135	157.5	180	202.5	225	247.5	270	292.5	315	337.5			
0	1172	1172	1172	1172	1172	1172	1172	1172	1172	1172	1172	1172	1172	1172	1172	1172			
5	1158	1166	1167	1167	1161	1154	1143	1133	1122	1114	1112	1112	1119	1128	1140	1149			
10	1071	1082	1086	1087	1075	1065	1045	1024	1000	982	980	985	1002	1018	1038	1055			
15	908	920	926	931	920	904	880	856	821	795	795	804	825	844	872	891			
20	704	712	719	727	716	701	679	655	618	590	589	602	624	643	673	693			
25	512	512	518	526	515	503	488	472	443	419	420	430	446	463	488	506			
30	361	362	365	370	358	348	337	328	307	291	292	299	310	322	342	355			
35	227	230	231	235	227	220	212	207	195	186	186	191	199	204	216	223			
40	141	141	143	145	140	135	130	129	122	117	116	121	127	130	133	138			
45	81.6	82.4	83.5	86.2	83.8	80.9	76.5	75.3	71.2	67.3	67.8	69.9	72.4	74.0	76.3	79.3			
50	43.6	43.4	44.6	46.2	45.3	43.8	42.3	41.7	39.2	36.3	36.4	37.7	39.2	39.1	40.9	42.5			
55	19.6	20.1	20.2	21.6	20.9	20.4	18.9	19.2	17.7	16.5	15.8	16.3	17.0	17.1	17.5	18.3			
60	9.08	9.21	8.80	9.66	9.69	9.59	8.38	8.70	7.85	7.48	7.59	8.73	8.82	8.45	7.78	8.78			
65	4.33	4.42	4.49	4.79	4.90	4.89	4.56	4.50	4.43	4.43	4.37	4.44	4.40	4.30	4.28	4.29			
70	2.97	3.01	3.04	3.14	3.18	3.23	3.17	3.16	3.13	3.07	3.02	3.02	3.02	2.98	2.96	2.93			
75	1.69	1.73	1.73	1.69	1.62	1.72	1.83	1.89	1.83	1.76	1.73	1.61	1.61	1.60	1.66	1.65			
80	0.65	0.65	0.59	0.55	0.54	0.57	0.63	0.72	0.72	0.70	0.63	0.57	0.55	0.56	0.61	0.64			
85	0.17	0.22	0.14	0.10	0.08	0.10	0.14	0.24	0.20	0.23	0.14	0.09	0.08	0.10	0.14	0.22			
90	0.01	0.01	0.01	0.00	0.01	0.01	0.00	0.01	0.01	0.01	0.01	0.01	0.01	0.01	0.01	0.01			

C Range: 0 - 360DEG  
 C Interval: 22.5DEG  
 Test Speed: HIGH  
 Temperature:25.3DEG  
 Operators:  
 Test Date:2021-02-23

γ Range: 0 - 90DEG  
 γ Interval: 1.0DEG  
 Test System:EVERFINE GO-SPEX500\_V1 SYSTEM V2.00.421  
 Humidity:65.0%  
 Test Distance:3.080m [K=1.0000]  
 Remarks: Energy Efficient Lighting LTD.