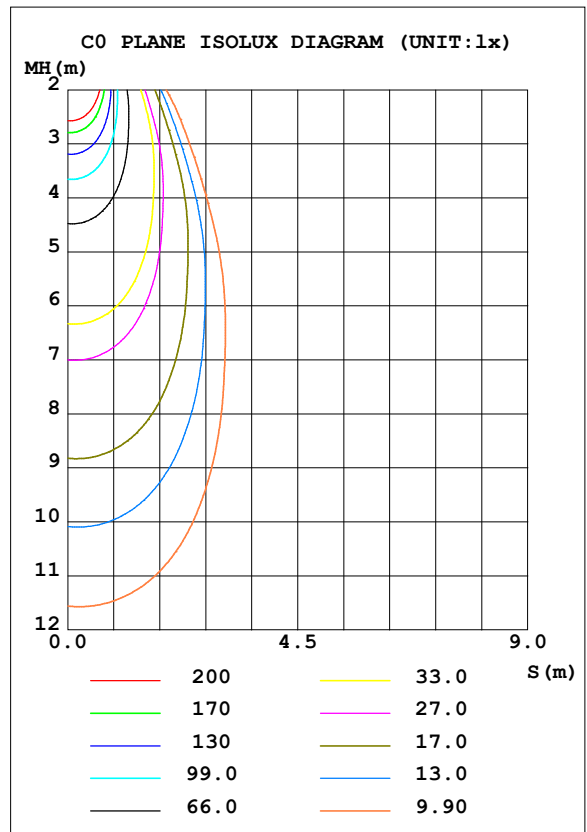
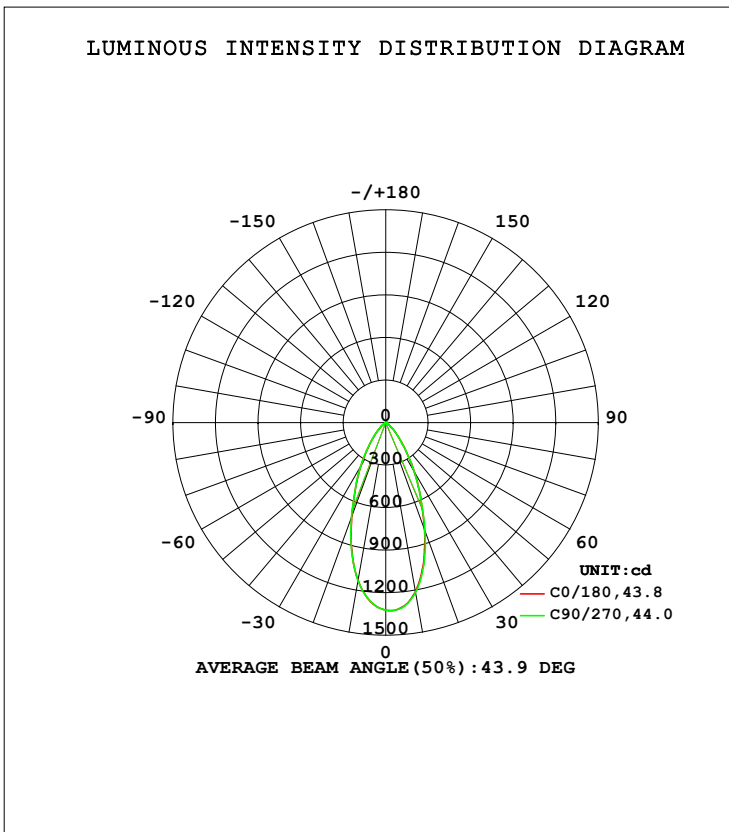


LUMINAIRE PHOTOMETRIC TEST REPORT

Test:U:120.22V I:0.0999A P:11.521W PF:0.9592 Freq:59.98Hz Lamp Flux:891.33x1 lm		
NAME: AD-LED-4-S12W-5CCTWH-LREY-SQ	TYPE: 普瑞	WEIGHT:
SPEC.: 3500K 90	DIM.:	SERIAL No.: 1
MFR.: ADS	SUR.:	Shielding Angle:

DATA OF LAMP		PHOTOMETRIC DATA Eff: 77.36 lm/W			
MODEL: AD-LED-4-S12W-5CCTWH-LREY-SQ		I _{max} (cd)	1330	S/MH (C0/180)	0.67
NOMINAL POWER (W)	12	LOR (%)	100.0	S/MH (C90/270)	0.67
RATED VOLTAGE (V)	120	TOTAL FLUX (lm)	891.33	η UP, DN (C0-180)	0.0, 52.3
NOMINAL FLUX (lm)	891.33	CIE CLASS	DIRECT	η UP, DN (C180-360)	0.0, 47.7
LAMPS INSIDE	1	η up (%)	0.0	CIBSE SHR NOM	0.75
TEST VOLTAGE (V)	120	η down (%)	100.0	CIBSE SHR MAX	0.75



C Range: 0 - 360DEG
 C Interval: 22.5DEG
 Test Speed: HIGH
 Temperature: 25.3DEG
 Operators:
 Test Date: 2021-02-23

γ Range: 0 - 90DEG
 γ Interval: 1.0DEG
 Test System: EVERFINE GO-SPEX500_V1 SYSTEM V2.00.421
 Humidity: 65.0%
 Test Distance: 3.080m [K=1.0000]
 Remarks: Energy Efficient Lighting LTD.

ZONAL FLUX DIAGRAM

ZONAL FLUX DIAGRAM:

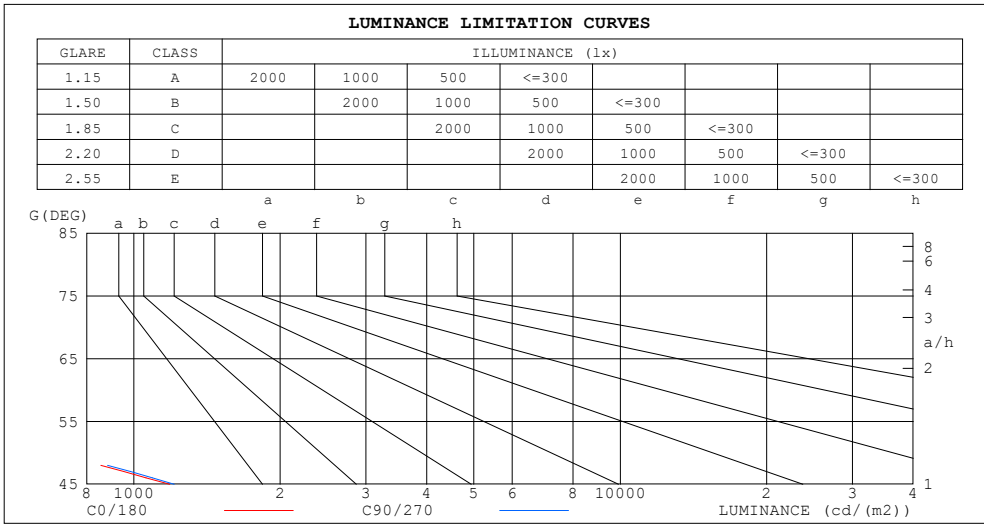
γ	C0	C45	C90	C135	C180	C225	C270	C315	γ	Φ zone	Φ total	%lum,lamp
10	1211	1227	1215	1179	1130	1109	1132	1172	0- 10	119.2	119.2	13.4,13.4
20	799.6	815.8	810.2	766.8	701.1	670.8	706.3	760.0	10- 20	270.2	389.4	43.7,43.7
30	410.4	415.2	406.7	380.5	349.2	333.1	352.4	386.8	20- 30	250.0	639.5	71.7,71.7
40	160.8	162.3	159.0	147.0	139.2	132.7	143.8	150.8	30- 40	153.4	792.9	89,89
50	49.36	50.49	51.24	47.79	44.38	41.38	44.37	46.13	40- 50	69.42	862.3	96.7,96.7
60	10.37	9.965	11.00	9.673	8.976	8.687	10.13	8.886	50- 60	21.10	883.4	99.1,99.1
70	3.389	3.454	3.614	3.615	3.567	3.455	3.435	3.364	60- 70	5.622	889.0	99.7,99.7
80	0.7456	0.6758	0.6076	0.7213	0.8199	0.7226	0.6290	0.6929	70- 80	2.059	891.1	100,100
90	0.0144	0.0107	0.0113	0.0067	0.0120	0.0134	0.0140	0.0133	80- 90	0.2578	891.3	100,100
100									90-100			
110									100-110			
120									110-120			
130									120-130			
140									130-140			
150									140-150			
160									150-160			
170									160-170			
180									170-180			
DEG	LUMINOUS INTENSITY:cd									UNIT:lm		

C Range: 0 - 360DEG
 C Interval: 22.5DEG
 Test Speed: HIGH
 Temperature:25.3DEG
 Operators:
 Test Date:2021-02-23

γ Range: 0 - 90DEG
 γ Interval: 1.0DEG
 Test System:EVERFINE GO-SPEX500_V1 SYSTEM V2.00.421
 Humidity:65.0%
 Test Distance:3.080m [K=1.0000]
 Remarks: Energy Efficient Lighting LTD.

LUMINANCE LIMITATION CURVES

Test:U:120.22V I:0.0999A P:11.521W PF:0.9592 Freq:59.98Hz Lamp Flux:891.33x1 lm		
NAME: AD-LED-4-S12W-5CCTWH-LREY-SQ	TYPE:普瑞	WEIGHT:
SPEC.:3500K 90	DIM.:	SERIAL No.:1
MFR.: ADS	SUR.:	Shielding Angle:



LUMINANCE cd/(m2)		
G (DEG)	C0/180	C90/270
85	21	10
80	39	32
75	67	64
70	89	95
65	105	118
60	186	198
55	347	370
50	691	718
45	1186	1210

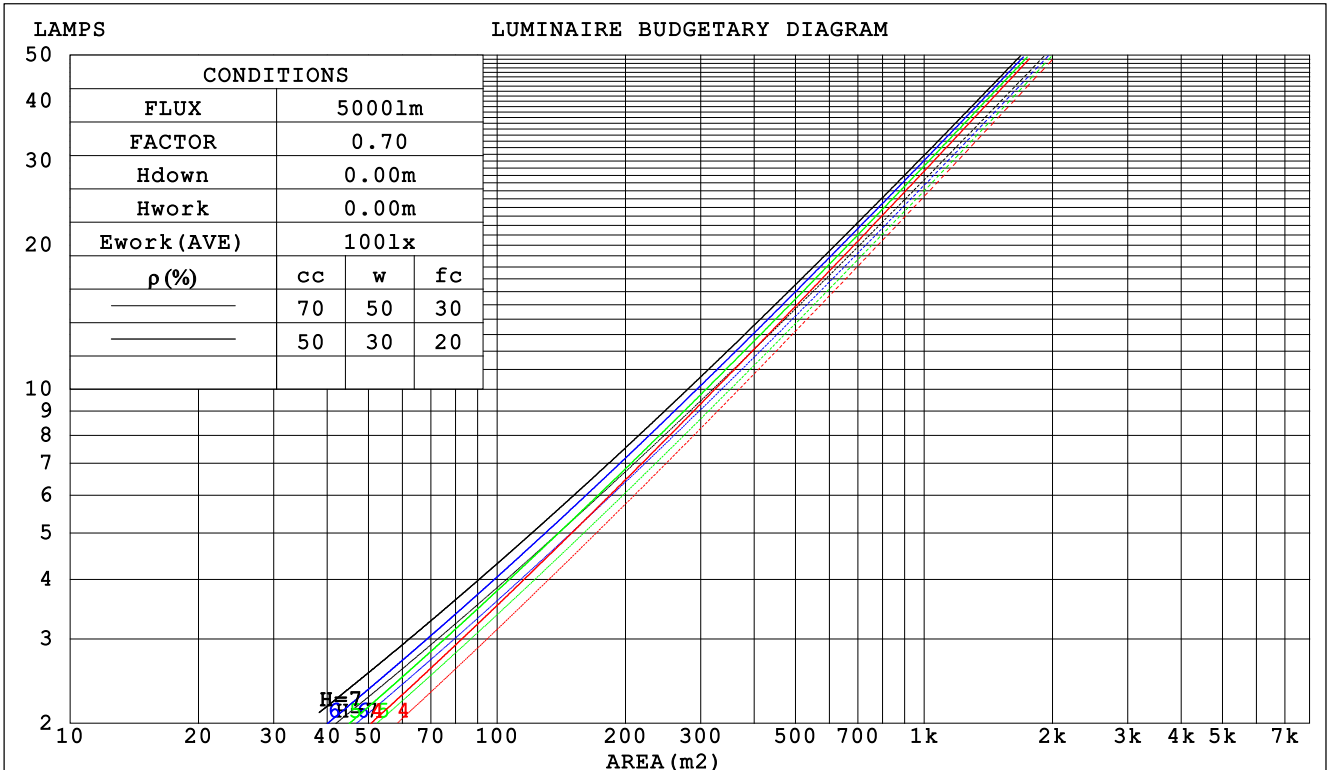
C Range: 0 - 360DEG
 C Interval: 22.5DEG
 Test Speed: HIGH
 Temperature:25.3DEG
 Operators:
 Test Date:2021-02-23

γ Range: 0 - 90DEG
 γ Interval: 1.0DEG
 Test System:EVERFINE GO-SPEX500_V1 SYSTEM V2.00.421
 Humidity:65.0%
 Test Distance:3.080m [K=1.0000]
 Remarks: Energy Efficient Lighting LTD.

CU AND LUMINAIRE BUDGETARY ESTIMATE DIAGRAM

Test:U:120.22V I:0.0999A P:11.521W PF:0.9592 Freq:59.98Hz Lamp Flux:891.33x1 lm		
NAME: AD-LED-4-S12W-5CCTWH-LREY-SQ	TYPE:普瑞	WEIGHT:
SPEC.:3500K 90	DIM.:	SERIAL No.:1
MFR.: ADS	SUR.:	Shielding Angle:

ρ_{cc}	80%			70%			50%			30%			10%			0
ρ_w	50%	30%	10%	50%	30%	10%	50%	30%	10%	50%	30%	10%	50%	30%	10%	0
ρ_{fc}	20%			20%			20%			20%			20%			0
RCR	RCR:Room Cavity Ratio						Coefficients of Utilization(CU)									
0.0	1.19	1.19	1.19	1.16	1.16	1.16	1.11	1.11	1.11	1.06	1.06	1.06	1.02	1.02	1.02	1.00
1.0	1.11	1.08	1.06	1.09	1.06	1.04	1.05	1.03	1.01	1.01	.99	.98	.97	.96	.95	.94
2.0	1.03	.99	.96	1.01	.98	.95	.98	.95	.93	.95	.93	.91	.92	.90	.89	.87
3.0	.96	.91	.87	.95	.90	.87	.92	.88	.85	.90	.87	.84	.88	.85	.83	.81
4.0	.90	.85	.80	.89	.84	.80	.87	.82	.79	.85	.81	.78	.83	.80	.77	.76
5.0	.84	.79	.74	.83	.78	.74	.82	.77	.73	.80	.76	.73	.78	.75	.72	.71
6.0	.79	.74	.69	.79	.73	.69	.77	.72	.69	.76	.71	.68	.74	.71	.68	.66
7.0	.75	.69	.65	.74	.69	.65	.73	.68	.64	.72	.67	.64	.71	.67	.64	.62
8.0	.71	.65	.61	.70	.65	.61	.69	.64	.60	.68	.64	.60	.67	.63	.60	.59
9.0	.67	.61	.57	.67	.61	.57	.66	.61	.57	.65	.60	.57	.64	.60	.57	.55
10.0	.64	.58	.54	.63	.58	.54	.62	.57	.54	.62	.57	.54	.61	.57	.54	.52



C Range: 0 - 360DEG
 C Interval: 22.5DEG
 Test Speed: HIGH
 Temperature:25.3DEG
 Operators:
 Test Date:2021-02-23

γ Range: 0 - 90DEG
 γ Interval: 1.0DEG
 Test System:EVERFINE GO-SPEX500_V1 SYSTEM V2.00.421
 Humidity:65.0%
 Test Distance:3.080m [K=1.0000]
 Remarks: Energy Efficient Lighting LTD.

WEC AND CCEC

Test:U:120.22V I:0.0999A P:11.521W PF:0.9592 Freq:59.98Hz Lamp Flux:891.33x1 lm		
NAME: AD-LED-4-S12W-5CCTWH-LREY-SQ	TYPE:普瑞	WEIGHT:
SPEC.:3500K 90	DIM.:	SERIAL No.:1
MFR.: ADS	SUR.:	Shielding Angle:

ρcc	80%			70%			50%			30%			10%			0
ρw	50%	30%	10%	50%	30%	10%	50%	30%	10%	50%	30%	10%	50%	30%	10%	0
ρfc	20%			20%			20%			20%			20%			0
RCR	RCR:Room Cavity Ratio						Wall Exitance Coefficients (WEC)									
0.0																
1.0	.178	.101	.032	.171	.097	.031	.158	.091	.029	.147	.085	.027	.136	.079	.025	
2.0	.170	.093	.029	.165	.091	.028	.154	.086	.027	.144	.081	.025	.135	.076	.024	
3.0	.162	.086	.026	.157	.084	.025	.148	.080	.024	.140	.077	.024	.132	.073	.023	
4.0	.154	.080	.024	.150	.079	.023	.142	.075	.023	.135	.072	.022	.128	.070	.021	
5.0	.147	.075	.022	.143	.073	.021	.136	.071	.021	.130	.069	.020	.124	.066	.020	
6.0	.140	.070	.020	.137	.069	.020	.131	.067	.019	.125	.065	.019	.120	.063	.019	
7.0	.133	.066	.019	.131	.065	.019	.125	.063	.018	.120	.062	.018	.116	.060	.018	
8.0	.127	.062	.017	.125	.061	.017	.120	.060	.017	.116	.059	.017	.112	.057	.017	
9.0	.122	.059	.016	.120	.058	.016	.115	.057	.016	.111	.056	.016	.108	.055	.016	
10.0	.117	.056	.016	.115	.055	.015	.111	.054	.015	.107	.053	.015	.104	.052	.015	

ρcc	80%			70%			50%			30%			10%			0
ρw	50%	30%	10%	50%	30%	10%	50%	30%	10%	50%	30%	10%	50%	30%	10%	0
ρfc	20%			20%			20%			20%			20%			0
RCR	RCR:Room Cavity Ratio						Ceiling Cavity Exitance Coefficients (CCEC)									
0.0	.190	.190	.190	.163	.163	.163	.111	.111	.111	.064	.064	.064	.020	.020	.020	
1.0	.171	.157	.145	.146	.135	.125	.100	.093	.086	.058	.054	.050	.018	.017	.016	
2.0	.156	.132	.113	.134	.114	.097	.092	.079	.068	.053	.046	.040	.017	.015	.013	
3.0	.144	.114	.090	.123	.098	.078	.085	.068	.054	.049	.040	.032	.016	.013	.011	
4.0	.133	.099	.072	.114	.085	.063	.079	.060	.044	.046	.035	.026	.015	.011	.009	
5.0	.125	.087	.060	.107	.075	.052	.074	.053	.037	.043	.031	.022	.014	.010	.007	
6.0	.117	.078	.050	.101	.068	.043	.070	.047	.031	.040	.028	.018	.013	.009	.006	
7.0	.111	.070	.042	.095	.061	.037	.066	.043	.026	.038	.025	.015	.012	.008	.005	
8.0	.105	.064	.036	.090	.056	.032	.062	.039	.022	.036	.023	.013	.012	.008	.004	
9.0	.100	.059	.031	.086	.051	.027	.060	.036	.019	.035	.021	.012	.011	.007	.004	
10.0	.095	.055	.028	.082	.047	.024	.057	.033	.017	.033	.020	.010	.011	.006	.003	

C Range: 0 - 360DEG
 C Interval: 22.5DEG
 Test Speed: HIGH
 Temperature:25.3DEG
 Operators:
 Test Date:2021-02-23

γ Range: 0 - 90DEG
 γ Interval: 1.0DEG
 Test System:EVERFINE GO-SPEX500_V1 SYSTEM V2.00.421
 Humidity:65.0%
 Test Distance:3.080m [K=1.0000]
 Remarks: Energy Efficient Lighting LTD.

UGR(Unified Glare Rating) Table

Test:U:120.22V I:0.0999A P:11.521W PF:0.9592 Freq:59.98Hz Lamp Flux:891.33x1 lm		
NAME: AD-LED-4-S12W-5CCTWH-LREY-SQ	TYPE:普瑞	WEIGHT:
SPEC.:3500K 90	DIM.:	SERIAL No.:1
MFR.: ADS	SUR.:	Shielding Angle:

ceiling/cavity	0.7	0.7	0.5	0.5	0.3	0.7	0.7	0.5	0.5	0.3
walls	0.5	0.3	0.5	0.3	0.3	0.5	0.3	0.5	0.3	0.3
working plane	0.2	0.2	0.2	0.2	0.2	0.2	0.2	0.2	0.2	0.2
Room dimensions	Viewed crosswise					Viewed endwise				
x = 2H y = 2H	8.7	9.7	8.9	9.8	10.0	8.8	9.7	9.0	9.9	10.1
3H	8.6	9.4	8.8	9.6	9.8	8.7	9.5	8.9	9.7	9.9
4H	8.5	9.3	8.8	9.5	9.8	8.6	9.4	8.9	9.6	9.8
6H	8.4	9.2	8.7	9.4	9.7	8.5	9.3	8.8	9.5	9.8
8H	8.4	9.1	8.7	9.4	9.6	8.5	9.2	8.8	9.4	9.7
12H	8.3	9.0	8.6	9.3	9.6	8.4	9.1	8.7	9.4	9.7
4H 2H	8.5	9.3	8.8	9.5	9.8	8.6	9.4	8.9	9.6	9.8
3H	8.4	9.1	8.7	9.3	9.6	8.5	9.2	8.8	9.4	9.7
4H	8.3	8.9	8.6	9.2	9.5	8.4	9.0	8.7	9.3	9.6
6H	8.2	8.8	8.6	9.1	9.5	8.3	8.9	8.7	9.2	9.5
8H	8.2	8.7	8.6	9.0	9.4	8.2	8.8	8.6	9.1	9.5
12H	8.1	8.6	8.5	9.0	9.4	8.2	8.7	8.6	9.0	9.4
8H 4H	8.2	8.7	8.6	9.0	9.4	8.2	8.8	8.6	9.1	9.5
6H	8.1	8.5	8.5	8.9	9.3	8.2	8.6	8.6	9.0	9.4
8H	8.0	8.4	8.5	8.8	9.3	8.1	8.5	8.5	8.9	9.3
12H	8.0	8.3	8.4	8.7	9.2	8.0	8.4	8.5	8.8	9.3
12H 4H	8.1	8.6	8.5	9.0	9.4	8.2	8.7	8.6	9.0	9.4
6H	8.0	8.4	8.5	8.8	9.3	8.1	8.5	8.5	8.9	9.3
8H	8.0	8.3	8.4	8.7	9.2	8.0	8.4	8.5	8.8	9.3
Variations with the observer position at spacings:										
S = 1.0H	+ 2.4 / - 7.6					+ 2.3 / - 7.4				
1.5H	+ 3.6 / - 5.8					+ 3.4 / - 5.6				
2.0H	+ 5.3 / - 7.1					+ 5.1 / - 7.0				

CIE Pub.117, 891.3 lm Total Lamp Luminous Flux Correct (8log(F/F0) = -0.4)
 Area: 0.111111 m2

C Range: 0 - 360DEG
 C Interval: 22.5DEG
 Test Speed: HIGH
 Temperature:25.3DEG
 Operators:
 Test Date:2021-02-23

γ Range: 0 - 90DEG
 γ Interval: 1.0DEG
 Test System:EVERFINE GO-SPEX500_V1 SYSTEM V2.00.421
 Humidity:65.0%
 Test Distance:3.080m [K=1.0000]
 Remarks: Energy Efficient Lighting LTD.

UTILIZATION FACTORS TABLE

Test:U:120.22V I:0.0999A P:11.521W PF:0.9592 Freq:59.98Hz Lamp Flux:891.33x1 lm		
NAME: AD-LED-4-S12W-5CCTWH-LREY-SQ	TYPE:普瑞	WEIGHT:
SPEC.:3500K 90	DIM.:	SERIAL No.:1
MFR.: ADS	SUR.:	Shielding Angle:

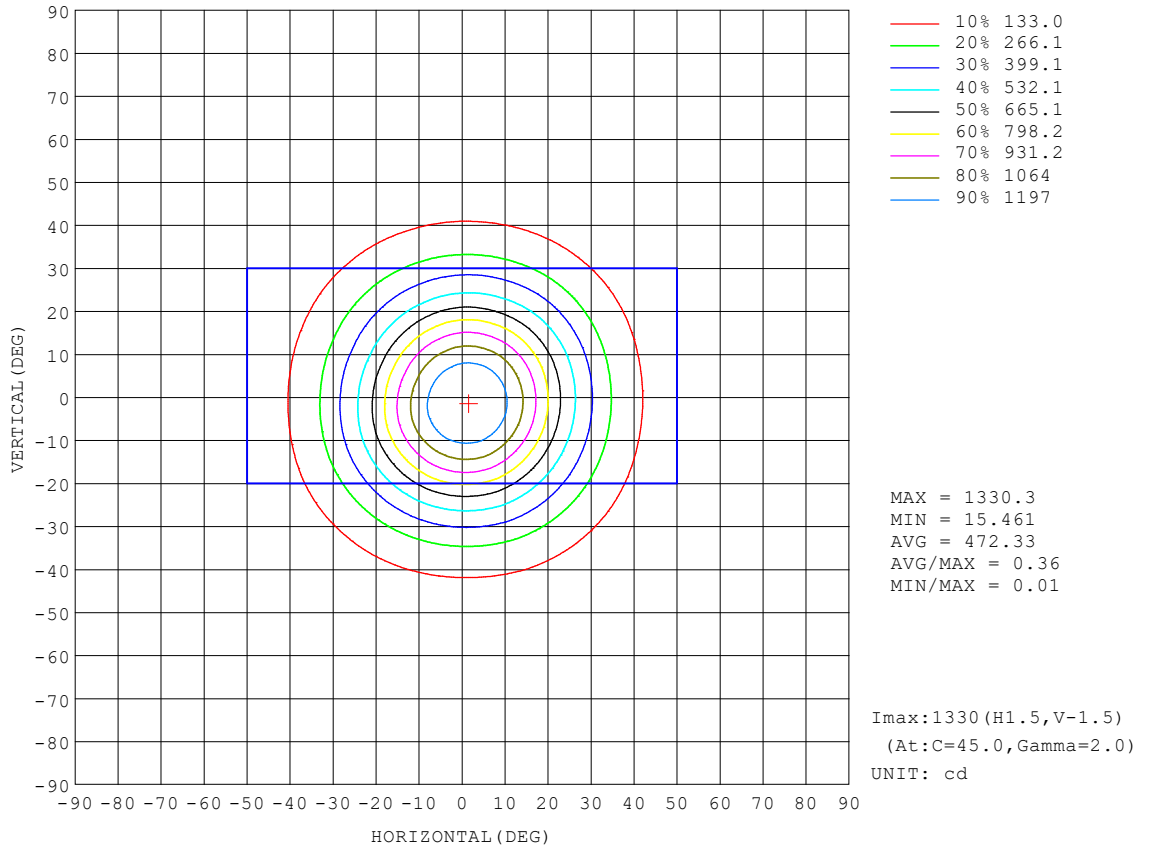
REFLECTANCE										
Ceiling	0.8	0.8	0.8	0.7	0.7	0.7	0.5	0.5	0.5	0
Walls	0.7	0.5	0.3	0.7	0.5	0.3	0.7	0.5	0.3	0
Working plane	0.2	0.2	0.2	0.2	0.2	0.2	0.2	0.2	0.2	0
ROOM INDEX	UTILIZATION FACTORS (PERCENT) $k(RI) \times RCR = 5$									
k = 0.60	85	78	74	84	77	73	83	77	73	69
0.80	92	86	82	92	86	82	91	85	82	78
1.00	98	92	88	97	91	87	95	91	87	83
1.25	102	96	93	101	96	92	99	95	91	87
1.50	105	100	96	104	99	96	101	97	95	90
2.00	108	103	100	106	102	99	104	100	98	92
2.50	110	106	102	108	104	102	105	102	100	94
3.00	111	108	105	109	106	104	106	104	102	95
4.00	113	110	108	111	109	107	108	106	104	97
5.00	115	112	110	112	110	109	108	107	106	98
ROOM INDEX	UF(total)									Direct
According to DIN EN 13032-2 2004			Suspended				SHRNOM = 1.25			

C Range: 0 - 360DEG
 C Interval: 22.5DEG
 Test Speed: HIGH
 Temperature:25.3DEG
 Operators:
 Test Date:2021-02-23

γ Range: 0 - 90DEG
 γ Interval: 1.0DEG
 Test System:EVERFINE GO-SPEX500_V1 SYSTEM V2.00.421
 Humidity:65.0%
 Test Distance:3.080m [K=1.0000]
 Remarks: Energy Efficient Lighting LTD.

ISOCANDELA DIAGRAM

Test:U:120.22V I:0.0999A P:11.521W PF:0.9592 Freq:59.98Hz Lamp Flux:891.33x1 lm		
NAME: AD-LED-4-S12W-5CCTWH-LREY-SQ	TYPE: 普瑞	WEIGHT:
SPEC.: 3500K 90	DIM.:	SERIAL No.:1
MFR.: ADS	SUR.:	Shielding Angle:

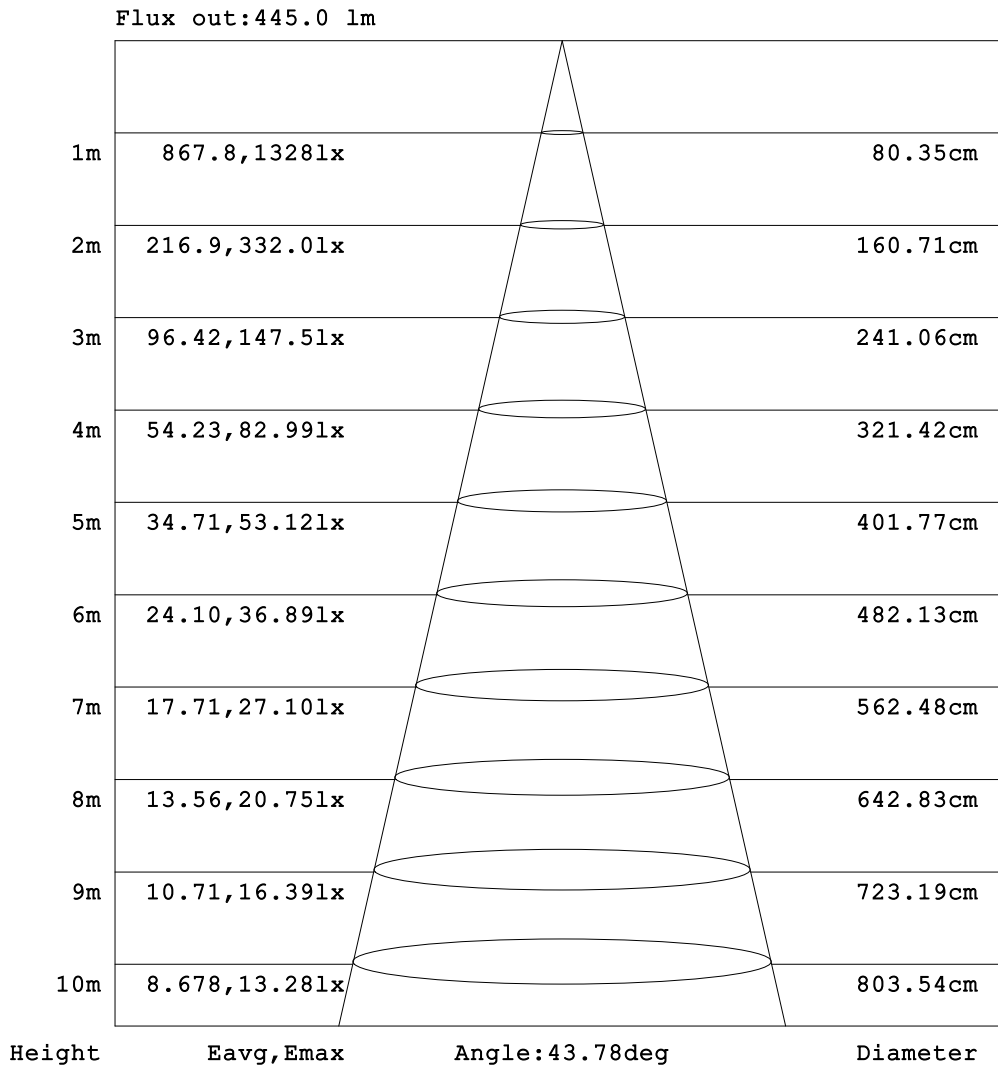


C Range: 0 - 360DEG
 C Interval: 22.5DEG
 Test Speed: HIGH
 Temperature: 25.3DEG
 Operators:
 Test Date: 2021-02-23

γ Range: 0 - 90DEG
 γ Interval: 1.0DEG
 Test System: EVERFINE GO-SPEX500_V1 SYSTEM V2.00.421
 Humidity: 65.0%
 Test Distance: 3.080m [K=1.0000]
 Remarks: Energy Efficient Lighting LTD.

AAI Figure

Test:U:120.22V I:0.0999A P:11.521W PF:0.9592 Freq:59.98Hz Lamp Flux:891.33x1 lm		
NAME: AD-LED-4-S12W-5CCTWH-LREY-SQ	TYPE:普瑞	WEIGHT:
SPEC.:3500K 90	DIM.:	SERIAL No.:1
MFR.: ADS	SUR.:	Shielding Angle:



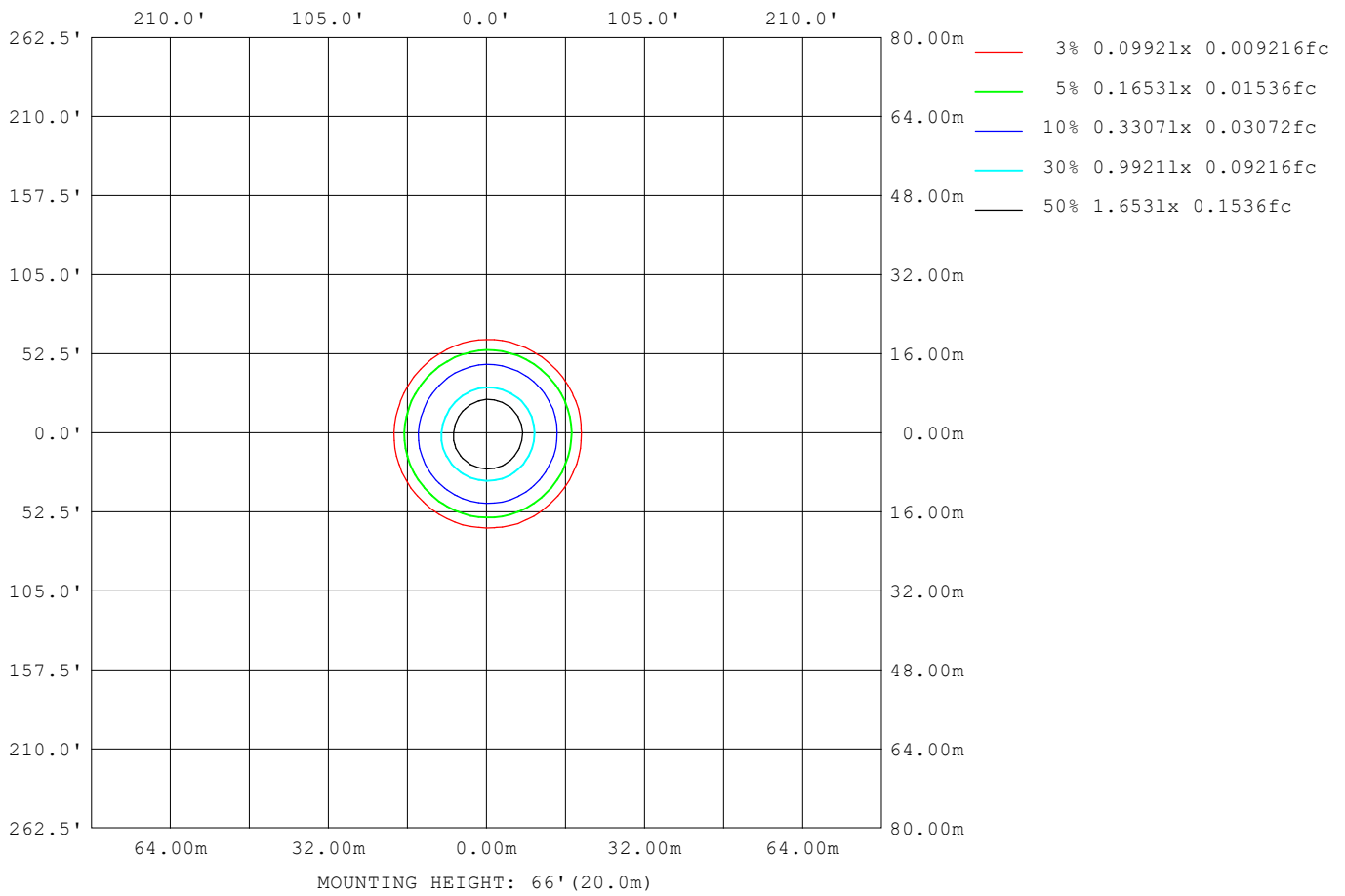
Note:The Curves indicate the illuminated area and the average illumination when the luminaire is at different distance.

C Range: 0 - 360DEG
 C Interval: 22.5DEG
 Test Speed: HIGH
 Temperature:25.3DEG
 Operators:
 Test Date:2021-02-23

γ Range: 0 - 90DEG
 γ Interval: 1.0DEG
 Test System:EVERFINE GO-SPEX500_V1 SYSTEM V2.00.421
 Humidity:65.0%
 Test Distance:3.080m [K=1.0000]
 Remarks: Energy Efficient Lighting LTD.

ISOLUX DIAGRAM

Test:U:120.22V I:0.0999A P:11.521W PF:0.9592 Freq:59.98Hz Lamp Flux:891.33x1 lm		
NAME: AD-LED-4-S12W-5CCTWH-LREY-SQ	TYPE:普瑞	WEIGHT:
SPEC.:3500K 90	DIM.:	SERIAL No.:1
MFR.: ADS	SUR.:	Shielding Angle:



C Range: 0 - 360DEG
 C Interval: 22.5DEG
 Test Speed: HIGH
 Temperature:25.3DEG
 Operators:
 Test Date:2021-02-23

γ Range: 0 - 90DEG
 γ Interval: 1.0DEG
 Test System:EVERFINE GO-SPEX500_V1 SYSTEM V2.00.421
 Humidity:65.0%
 Test Distance:3.080m [K=1.0000]
 Remarks: Energy Efficient Lighting LTD.

LED Avg.L Report

Test:U:120.22V I:0.0999A P:11.521W PF:0.9592 Freq:59.98Hz Lamp Flux:891.33x1 lm		
NAME: AD-LED-4-S12W-5CCTWH-LREY-SQ	TYPE:普瑞	WEIGHT:
SPEC.:3500K 90	DIM.:	SERIAL No.:1
MFR.: ADS	SUR.:	Shielding Angle:

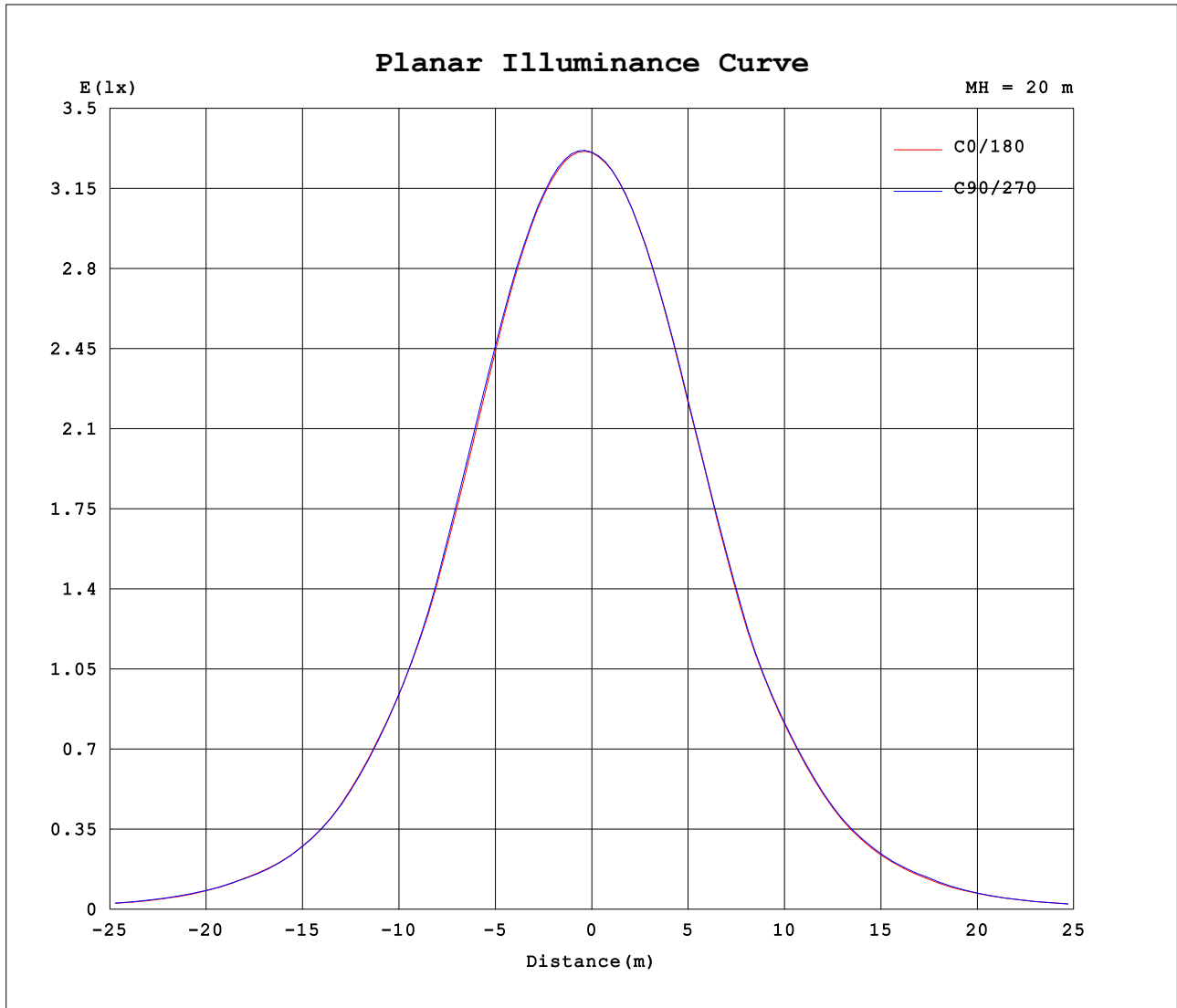
AvgL	cd/m2
L_0~180 (65) av	106
L_0~180 (75) av	70
L_0~180 (85) av	22
L_90~270 (65) av	112
L_90~270 (75) av	64
L_90~270 (85) av	10
L_45 (65) av	107
L_45 (75) av	69
L_45 (85) av	17

Standard: GB/T 29293-2012

C Range: 0 - 360DEG
 C Interval: 22.5DEG
 Test Speed: HIGH
 Temperature:25.3DEG
 Operators:
 Test Date:2021-02-23

γ Range: 0 - 90DEG
 γ Interval: 1.0DEG
 Test System:EVERFINE GO-SPEX500_V1 SYSTEM V2.00.421
 Humidity:65.0%
 Test Distance:3.080m [K=1.0000]
 Remarks: Energy Efficient Lighting LTD.

Planar Illuminance Curve



C Range: 0 - 360DEG
 C Interval: 22.5DEG
 Test Speed: HIGH
 Temperature: 25.3DEG
 Operators:
 Test Date: 2021-02-23

γ Range: 0 - 90DEG
 γ Interval: 1.0DEG
 Test System: EVERFINE GO-SPEX500_V1 SYSTEM V2.00.421
 Humidity: 65.0%
 Test Distance: 3.080m [K=1.0000]
 Remarks: Energy Efficient Lighting LTD.

