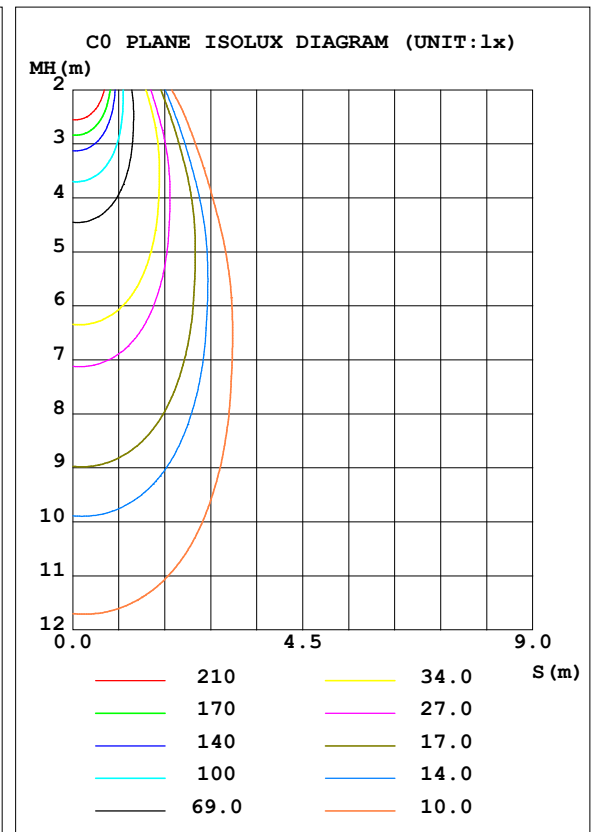
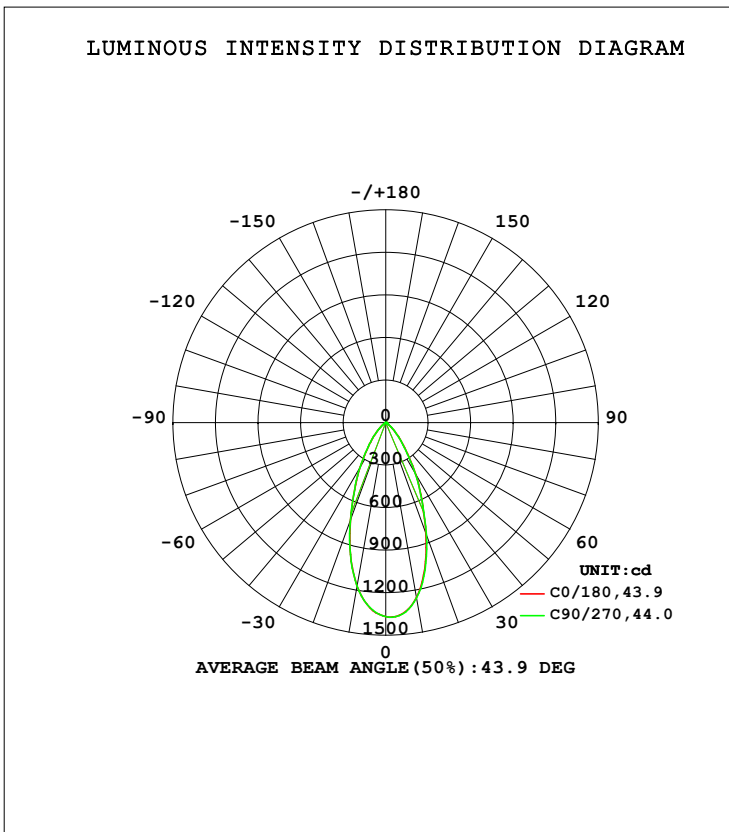


LUMINAIRE PHOTOMETRIC TEST REPORT

Test:U:120.23V I:0.1001A P:11.549W PF:0.9594 Freq:59.98Hz Lamp Flux:923.807x1 lm		
NAME: AD-LED-4-S12W-5CCTWH-LREY-SQ	TYPE:普瑞	WEIGHT:
SPEC.:4000K 90	DIM.:	SERIAL No.:1
MFR.: ADS	SUR.:	Shielding Angle:

DATA OF LAMP		PHOTOMETRIC DATA Eff: 79.99 lm/W			
AD-LED-4-S12W-5CCTWH-LREY-SQ		I _{max} (cd)	1376	S/MH (C0/180)	0.67
NOMINAL POWER (W)	12	LOR (%)	100.0	S/MH (C90/270)	0.67
RATED VOLTAGE (V)	120	TOTAL FLUX (lm)	923.81	η UP, DN (C0-180)	0.0, 52.3
NOMINAL FLUX (lm)	923.807	CIE CLASS	DIRECT	η UP, DN (C180-360)	0.0, 47.7
LAMPS INSIDE	1	η up (%)	0.0	CIBSE SHR NOM	0.75
TEST VOLTAGE (V)	120	η down (%)	100.0	CIBSE SHR MAX	0.75



C Range: 0 - 360DEG
 C Interval: 22.5DEG
 Test Speed: HIGH
 Temperature: 25.3DEG
 Operators:
 Test Date: 2021-02-23

γ Range: 0 - 90DEG
 γ Interval: 1.0DEG
 Test System: EVERFINE GO-SPEX500_V1 SYSTEM V2.00.421
 Humidity: 65.0%
 Test Distance: 3.080m [K=1.0000]
 Remarks: Energy Efficient Lighting LTD.

ZONAL FLUX DIAGRAM

ZONAL FLUX DIAGRAM:

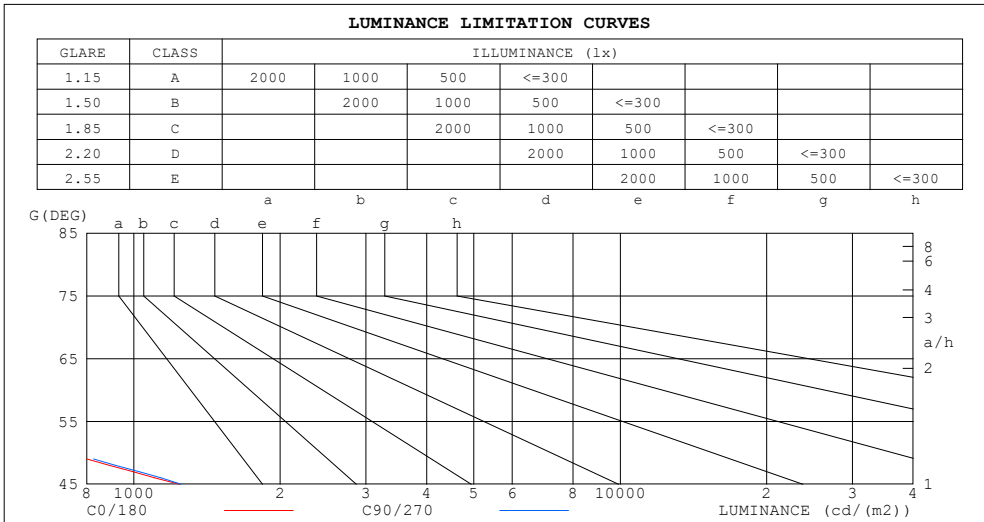
γ	C0	C45	C90	C135	C180	C225	C270	C315	γ	Φ zone	Φ total	%lum, lamp
10	1252	1269	1256	1220	1169	1147	1170	1212	0- 10	123.3	123.3	13.3,13.3
20	829.1	846.7	838.7	793.5	727.0	696.5	730.7	786.4	10- 20	279.7	403.0	43.6,43.6
30	425.9	431.3	421.6	394.0	362.8	346.1	365.0	400.6	20- 30	259.2	662.2	71.7,71.7
40	167.4	168.9	165.1	152.6	144.8	138.1	149.2	156.3	30- 40	159.3	821.5	88.9,88.9
50	51.39	52.56	53.20	49.57	46.17	43.10	46.03	47.87	40- 50	72.15	893.6	96.7,96.7
60	10.71	10.38	11.42	10.05	9.348	9.042	10.52	9.234	50- 60	21.93	915.5	99.1,99.1
70	3.522	3.600	3.757	3.755	3.712	3.599	3.569	3.501	60- 70	5.848	921.4	99.7,99.7
80	0.7745	0.7042	0.6327	0.7508	0.8536	0.7525	0.6547	0.7215	70- 80	2.142	923.5	100,100
90	0.0114	0.0073	0.0133	0.0097	0.0124	0.0154	0.0143	0.0113	80- 90	0.2686	923.8	100,100
100									90-100			
110									100-110			
120									110-120			
130									120-130			
140									130-140			
150									140-150			
160									150-160			
170									160-170			
180									170-180			
DEG	LUMINOUS INTENSITY:cd									UNIT:lm		

C Range: 0 - 360DEG
 C Interval: 22.5DEG
 Test Speed: HIGH
 Temperature:25.3DEG
 Operators:
 Test Date:2021-02-23

γ Range: 0 - 90DEG
 γ Interval: 1.0DEG
 Test System:EVERFINE GO-SPEX500_V1 SYSTEM V2.00.421
 Humidity:65.0%
 Test Distance:3.080m [K=1.0000]
 Remarks: Energy Efficient Lighting LTD.

LUMINANCE LIMITATION CURVES

Test:U:120.23V I:0.1001A P:11.549W PF:0.9594 Freq:59.98Hz Lamp Flux:923.807x1 lm		
NAME: AD-LED-4-S12W-5CCTWH-LREY-SQ	TYPE:普瑞	WEIGHT:
SPEC.:4000K 90	DIM.:	SERIAL No.:1
MFR.: ADS	SUR.:	Shielding Angle:



LUMINANCE cd/(m2)		
G (DEG)	C0/180	C90/270
85	21	10
80	40	33
75	70	66
70	93	99
65	110	123
60	193	206
55	361	385
50	719	745
45	1241	1251

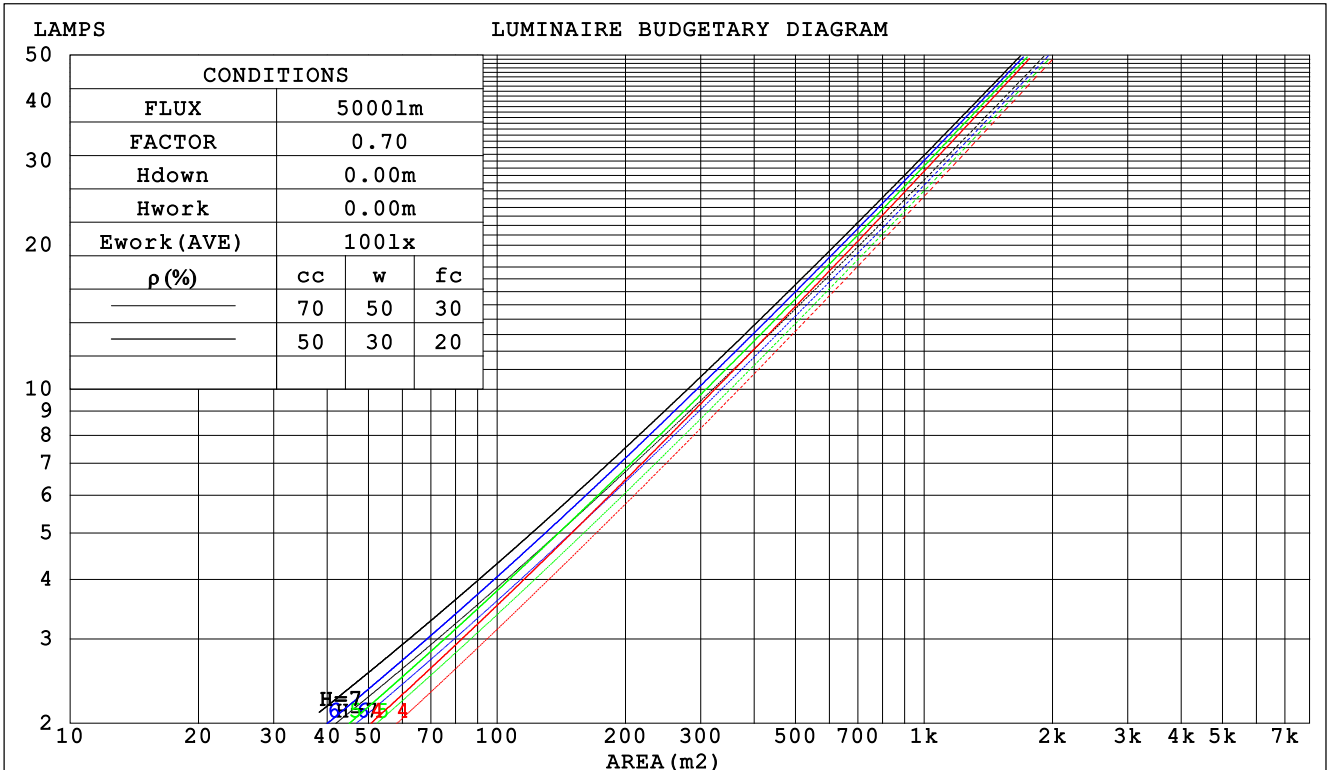
C Range: 0 - 360DEG
 C Interval: 22.5DEG
 Test Speed: HIGH
 Temperature:25.3DEG
 Operators:
 Test Date:2021-02-23

γ Range: 0 - 90DEG
 γ Interval: 1.0DEG
 Test System:EVERFINE GO-SPEX500_V1 SYSTEM V2.00.421
 Humidity:65.0%
 Test Distance:3.080m [K=1.0000]
 Remarks: Energy Efficient Lighting LTD.

CU AND LUMINAIRE BUDGETARY ESTIMATE DIAGRAM

Test:U:120.23V I:0.1001A P:11.549W PF:0.9594 Freq:59.98Hz Lamp Flux:923.807x1 lm		
NAME: AD-LED-4-S12W-5CCTWH-LREY-SQ	TYPE:普瑞	WEIGHT:
SPEC.:4000K 90	DIM.:	SERIAL No.:1
MFR.: ADS	SUR.:	Shielding Angle:

ρcc	80%			70%			50%			30%			10%			0
ρw	50%	30%	10%	50%	30%	10%	50%	30%	10%	50%	30%	10%	50%	30%	10%	0
ρfc	20%			20%			20%			20%			20%			0
RCR	RCR:Room Cavity Ratio															
	Coefficients of Utilization(CU)															
0.0	1.19	1.19	1.19	1.16	1.16	1.16	1.11	1.11	1.11	1.06	1.06	1.06	1.02	1.02	1.02	.00
1.0	1.11	1.08	1.06	1.09	1.06	1.04	1.05	1.03	1.01	1.01	.99	.98	.97	.96	.95	.94
2.0	1.03	.99	.96	1.01	.98	.95	.98	.95	.93	.95	.93	.91	.92	.90	.89	.87
3.0	.96	.91	.87	.95	.90	.87	.92	.88	.85	.90	.87	.84	.88	.85	.83	.81
4.0	.90	.85	.80	.89	.84	.80	.87	.82	.79	.85	.81	.78	.83	.80	.77	.76
5.0	.84	.79	.74	.83	.78	.74	.82	.77	.73	.80	.76	.73	.78	.75	.72	.71
6.0	.79	.73	.69	.79	.73	.69	.77	.72	.69	.76	.71	.68	.74	.71	.68	.66
7.0	.75	.69	.65	.74	.69	.65	.73	.68	.64	.72	.67	.64	.71	.67	.64	.62
8.0	.71	.65	.61	.70	.65	.61	.69	.64	.60	.68	.64	.60	.67	.63	.60	.59
9.0	.67	.61	.57	.67	.61	.57	.66	.61	.57	.65	.60	.57	.64	.60	.57	.55
10.0	.64	.58	.54	.63	.58	.54	.62	.57	.54	.62	.57	.54	.61	.57	.54	.52



C Range: 0 - 360DEG
 C Interval: 22.5DEG
 Test Speed: HIGH
 Temperature:25.3DEG
 Operators:
 Test Date:2021-02-23

γ Range: 0 - 90DEG
 γ Interval: 1.0DEG
 Test System:EVERFINE GO-SPEX500_V1 SYSTEM V2.00.421
 Humidity:65.0%
 Test Distance:3.080m [K=1.0000]
 Remarks: Energy Efficient Lighting LTD.

WEC AND CCEC

Test:U:120.23V I:0.1001A P:11.549W PF:0.9594 Freq:59.98Hz Lamp Flux:923.807x1 lm		
NAME: AD-LED-4-S12W-5CCTWH-LREY-SQ	TYPE:普瑞	WEIGHT:
SPEC.:4000K 90	DIM.:	SERIAL No.:1
MFR.: ADS	SUR.:	Shielding Angle:

ρcc	80%			70%			50%			30%			10%			0
ρw	50%	30%	10%	50%	30%	10%	50%	30%	10%	50%	30%	10%	50%	30%	10%	0
ρfc	20%			20%			20%			20%			20%			0
RCR	RCR:Room Cavity Ratio						Wall Exitance Coefficients (WEC)									
0.0																
1.0	.178	.101	.032	.171	.098	.031	.158	.091	.029	.147	.085	.027	.136	.079	.025	
2.0	.170	.093	.029	.165	.091	.028	.154	.086	.027	.144	.081	.025	.135	.077	.024	
3.0	.162	.086	.026	.157	.084	.025	.148	.080	.024	.140	.077	.024	.132	.073	.023	
4.0	.154	.080	.024	.150	.079	.023	.142	.075	.023	.135	.073	.022	.128	.070	.021	
5.0	.147	.075	.022	.143	.073	.021	.136	.071	.021	.130	.069	.020	.124	.066	.020	
6.0	.140	.070	.020	.137	.069	.020	.131	.067	.019	.125	.065	.019	.120	.063	.019	
7.0	.133	.066	.019	.131	.065	.019	.125	.063	.018	.120	.062	.018	.116	.060	.018	
8.0	.127	.062	.018	.125	.062	.017	.120	.060	.017	.116	.059	.017	.112	.057	.017	
9.0	.122	.059	.016	.120	.058	.016	.115	.057	.016	.111	.056	.016	.108	.055	.016	
10.0	.117	.056	.016	.115	.055	.015	.111	.054	.015	.107	.053	.015	.104	.052	.015	

ρcc	80%			70%			50%			30%			10%			0
ρw	50%	30%	10%	50%	30%	10%	50%	30%	10%	50%	30%	10%	50%	30%	10%	0
ρfc	20%			20%			20%			20%			20%			0
RCR	RCR:Room Cavity Ratio						Ceiling Cavity Exitance Coefficients (CCEC)									
0.0	.190	.190	.190	.163	.163	.163	.111	.111	.111	.064	.064	.064	.020	.020	.020	
1.0	.171	.157	.145	.146	.135	.125	.100	.093	.086	.058	.054	.050	.018	.017	.016	
2.0	.156	.132	.113	.134	.114	.097	.092	.079	.068	.053	.046	.040	.017	.015	.013	
3.0	.144	.114	.090	.123	.098	.078	.085	.068	.054	.049	.040	.032	.016	.013	.011	
4.0	.133	.099	.072	.115	.085	.063	.079	.060	.044	.046	.035	.026	.015	.011	.009	
5.0	.125	.087	.060	.107	.075	.052	.074	.053	.037	.043	.031	.022	.014	.010	.007	
6.0	.117	.078	.050	.101	.068	.043	.070	.047	.031	.040	.028	.018	.013	.009	.006	
7.0	.111	.070	.042	.095	.061	.037	.066	.043	.026	.038	.025	.015	.012	.008	.005	
8.0	.105	.064	.036	.090	.056	.032	.062	.039	.022	.036	.023	.013	.012	.008	.004	
9.0	.100	.059	.031	.086	.051	.027	.060	.036	.019	.035	.021	.012	.011	.007	.004	
10.0	.095	.055	.027	.082	.047	.024	.057	.033	.017	.033	.020	.010	.011	.006	.003	

C Range: 0 - 360DEG
 C Interval: 22.5DEG
 Test Speed: HIGH
 Temperature:25.3DEG
 Operators:
 Test Date:2021-02-23

γ Range: 0 - 90DEG
 γ Interval: 1.0DEG
 Test System:EVERFINE GO-SPEX500_V1 SYSTEM V2.00.421
 Humidity:65.0%
 Test Distance:3.080m [K=1.0000]
 Remarks: Energy Efficient Lighting LTD.

UGR(Unified Glare Rating) Table

Test:U:120.23V I:0.1001A P:11.549W PF:0.9594 Freq:59.98Hz Lamp Flux:923.807x1 lm		
NAME: AD-LED-4-S12W-5CCTWH-LREY-SQ	TYPE:普瑞	WEIGHT:
SPEC.:4000K 90	DIM.:	SERIAL No.:1
MFR.: ADS	SUR.:	Shielding Angle:

ceiling/cavity	0.7	0.7	0.5	0.5	0.3	0.7	0.7	0.5	0.5	0.3
walls	0.5	0.3	0.5	0.3	0.3	0.5	0.3	0.5	0.3	0.3
working plane	0.2	0.2	0.2	0.2	0.2	0.2	0.2	0.2	0.2	0.2
Room dimensions	Viewed crosswise					Viewed endwise				
x = 2H y = 2H	8.7	9.7	9.0	9.9	10.0	8.8	9.7	9.0	9.9	10.1
3H	8.6	9.5	8.9	9.7	9.9	8.7	9.5	8.9	9.7	9.9
4H	8.5	9.4	8.8	9.6	9.8	8.6	9.4	8.9	9.6	9.9
6H	8.4	9.2	8.7	9.5	9.7	8.5	9.3	8.8	9.5	9.8
8H	8.4	9.1	8.7	9.4	9.7	8.5	9.2	8.8	9.5	9.7
12H	8.4	9.1	8.7	9.3	9.6	8.4	9.1	8.7	9.4	9.7
4H 2H	8.5	9.4	8.8	9.6	9.8	8.6	9.4	8.9	9.6	9.9
3H	8.4	9.1	8.7	9.4	9.7	8.5	9.2	8.8	9.4	9.7
4H	8.3	9.0	8.7	9.3	9.6	8.4	9.0	8.7	9.3	9.6
6H	8.2	8.8	8.6	9.1	9.5	8.3	8.9	8.7	9.2	9.5
8H	8.2	8.7	8.6	9.1	9.4	8.3	8.8	8.6	9.1	9.5
12H	8.1	8.6	8.6	9.0	9.4	8.2	8.7	8.6	9.1	9.4
8H 4H	8.2	8.7	8.6	9.1	9.4	8.3	8.8	8.6	9.1	9.5
6H	8.1	8.5	8.5	8.9	9.3	8.2	8.6	8.6	9.0	9.4
8H	8.1	8.4	8.5	8.9	9.3	8.1	8.5	8.6	8.9	9.3
12H	8.0	8.3	8.5	8.8	9.2	8.1	8.4	8.5	8.8	9.3
12H 4H	8.1	8.6	8.6	9.0	9.4	8.2	8.7	8.6	9.1	9.4
6H	8.1	8.4	8.5	8.9	9.3	8.1	8.5	8.6	8.9	9.3
8H	8.0	8.3	8.5	8.8	9.2	8.1	8.4	8.5	8.8	9.3
Variations with the observer position at spacings:										
S = 1.0H	+ 2.4 / - 7.6					+ 2.3 / - 7.4				
1.5H	+ 3.6 / - 5.7					+ 3.4 / - 5.6				
2.0H	+ 5.3 / - 7.1					+ 5.1 / - 7.0				

CIE Pub.117, 923.8 lm Total Lamp Luminous Flux Correct (8log(F/F0) = -0.3)
 Area: 0.111111 m2

C Range: 0 - 360DEG
 C Interval: 22.5DEG
 Test Speed: HIGH
 Temperature:25.3DEG
 Operators:
 Test Date:2021-02-23

γ Range: 0 - 90DEG
 γ Interval: 1.0DEG
 Test System:EVERFINE GO-SPEX500_V1 SYSTEM V2.00.421
 Humidity:65.0%
 Test Distance:3.080m [K=1.0000]
 Remarks: Energy Efficient Lighting LTD.

UTILIZATION FACTORS TABLE

Test:U:120.23V I:0.1001A P:11.549W PF:0.9594 Freq:59.98Hz Lamp Flux:923.807x1 lm		
NAME: AD-LED-4-S12W-5CCTWH-LREY-SQ	TYPE:普瑞	WEIGHT:
SPEC.:4000K 90	DIM.:	SERIAL No.:1
MFR.: ADS	SUR.:	Shielding Angle:

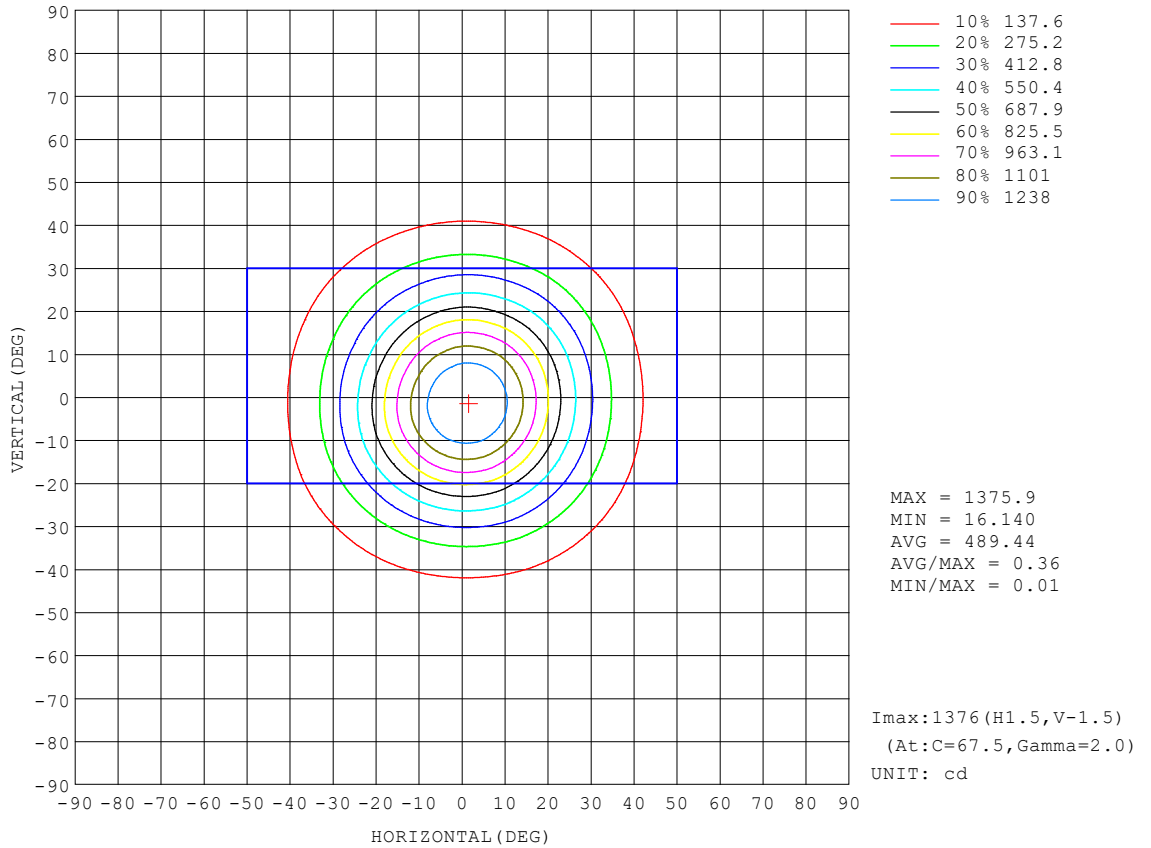
REFLECTANCE										
Ceiling	0.8	0.8	0.8	0.7	0.7	0.7	0.5	0.5	0.5	0
Walls	0.7	0.5	0.3	0.7	0.5	0.3	0.7	0.5	0.3	0
Working plane	0.2	0.2	0.2	0.2	0.2	0.2	0.2	0.2	0.2	0
ROOM INDEX	UTILIZATION FACTORS (PERCENT) $k(RI) \times RCR = 5$									
k = 0.60	84	78	74	84	77	73	83	77	73	69
0.80	92	86	82	92	86	82	90	85	82	78
1.00	98	92	88	97	91	87	95	91	87	83
1.25	102	96	93	101	96	92	99	95	91	87
1.50	105	100	96	104	99	96	101	97	95	90
2.00	108	103	100	106	102	99	104	100	98	92
2.50	110	106	102	108	104	102	105	102	100	94
3.00	111	108	105	109	106	104	106	104	102	95
4.00	113	110	108	111	109	107	108	106	104	97
5.00	115	112	110	112	110	109	108	107	106	98
ROOM INDEX	UF(total)									Direct
According to DIN EN 13032-2 2004			Suspended				SHRNOM = 1.25			

C Range: 0 - 360DEG
 C Interval: 22.5DEG
 Test Speed: HIGH
 Temperature:25.3DEG
 Operators:
 Test Date:2021-02-23

γ Range: 0 - 90DEG
 γ Interval: 1.0DEG
 Test System:EVERFINE GO-SPEX500_V1 SYSTEM V2.00.421
 Humidity:65.0%
 Test Distance:3.080m [K=1.0000]
 Remarks: Energy Efficient Lighting LTD.

ISOCANDELA DIAGRAM

Test:U:120.23V I:0.1001A P:11.549W PF:0.9594 Freq:59.98Hz Lamp Flux:923.807x1 lm		
NAME: AD-LED-4-S12W-5CCTWH-LREY-SQ	TYPE:普瑞	WEIGHT:
SPEC.:4000K 90	DIM.:	SERIAL No.:1
MFR.: ADS	SUR.:	Shielding Angle:

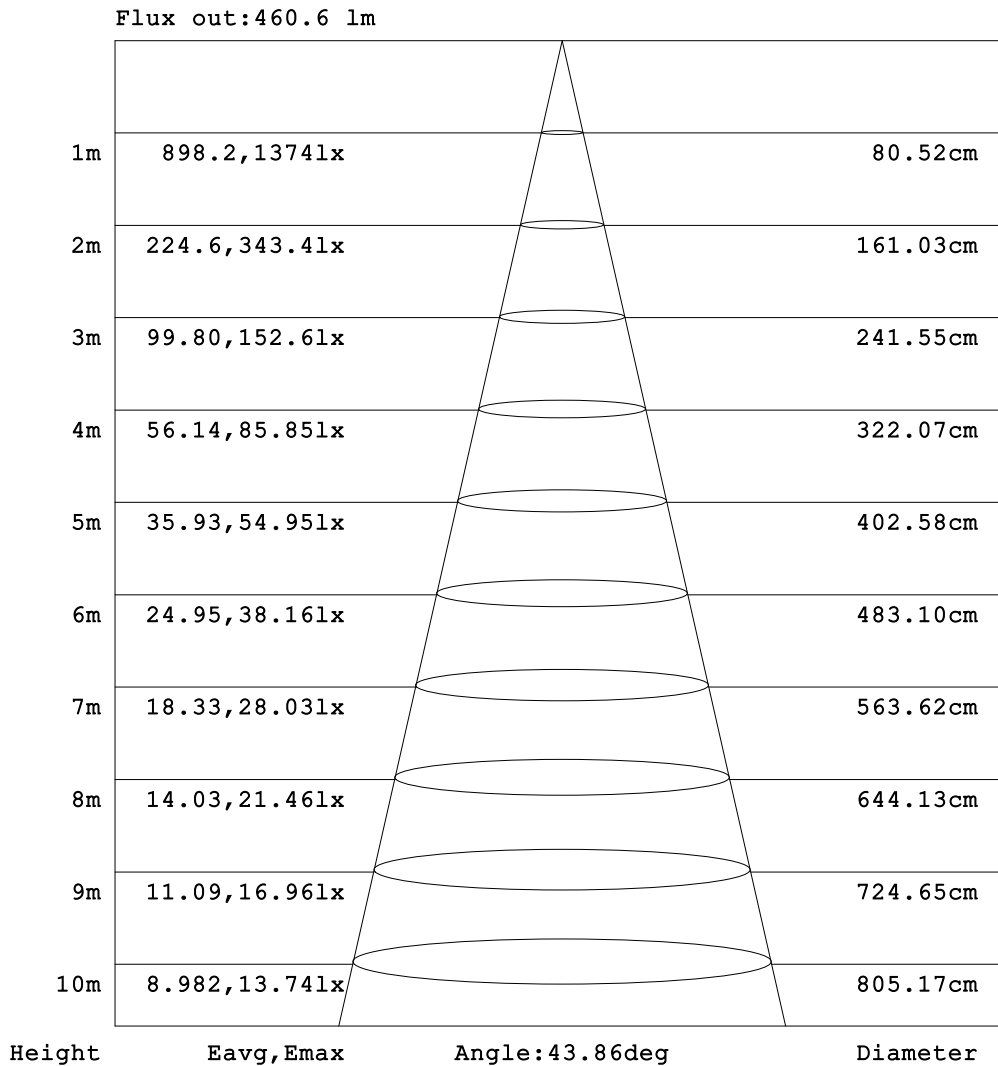


C Range: 0 - 360DEG
 C Interval: 22.5DEG
 Test Speed: HIGH
 Temperature:25.3DEG
 Operators:
 Test Date:2021-02-23

γ Range: 0 - 90DEG
 γ Interval: 1.0DEG
 Test System:EVERFINE GO-SPEX500_V1 SYSTEM V2.00.421
 Humidity:65.0%
 Test Distance:3.080m [K=1.0000]
 Remarks: Energy Efficient Lighting LTD.

AAI Figure

Test:U:120.23V I:0.1001A P:11.549W PF:0.9594 Freq:59.98Hz Lamp Flux:923.807x1 lm		
NAME: AD-LED-4-S12W-5CCTWH-LREY-SQ	TYPE:普瑞	WEIGHT:
SPEC.:4000K 90	DIM.:	SERIAL No.:1
MFR.: ADS	SUR.:	Shielding Angle:



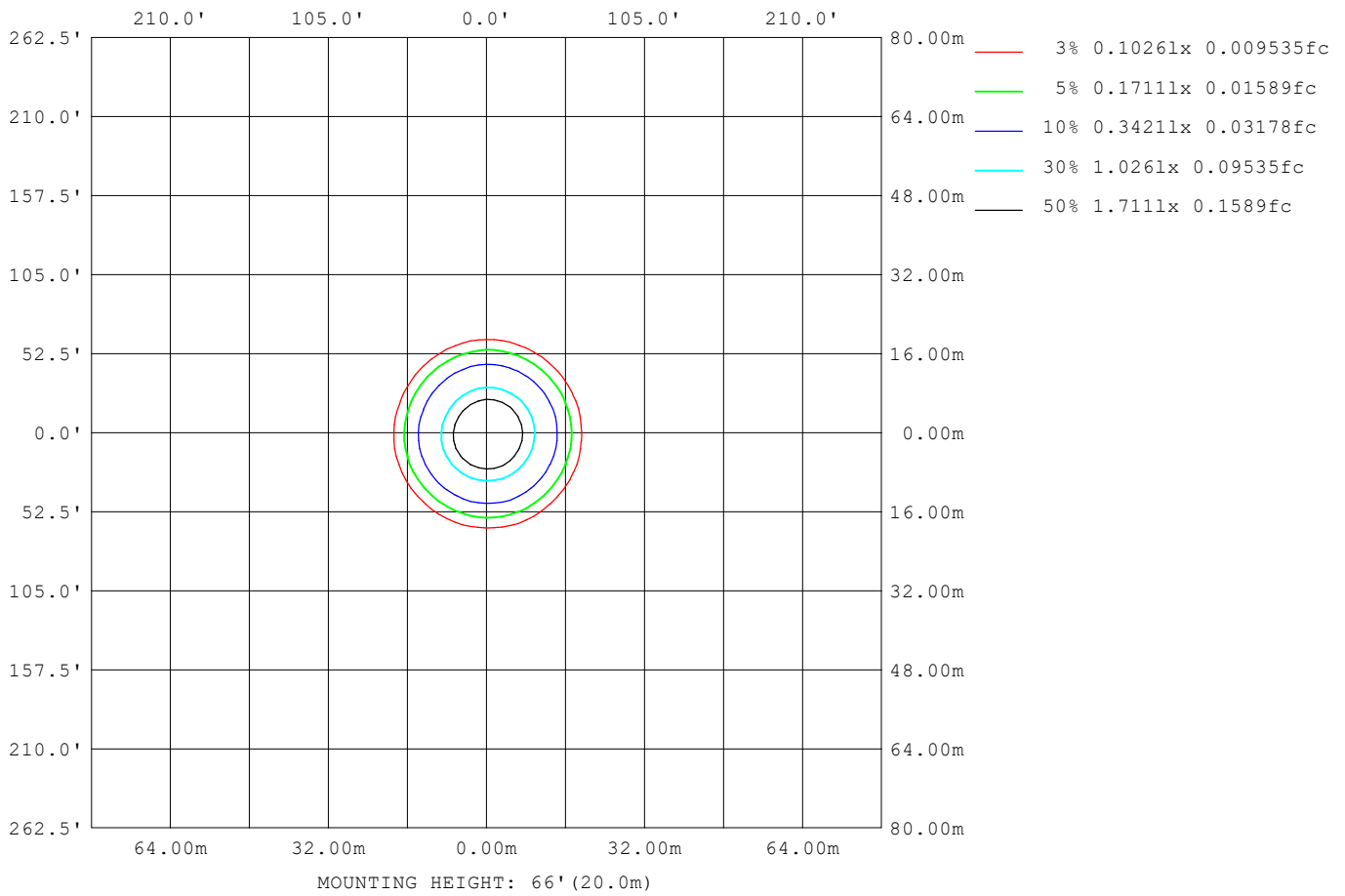
Note:The Curves indicate the illuminated area and the average illumination when the luminaire is at different distance.

C Range: 0 - 360DEG
 C Interval: 22.5DEG
 Test Speed: HIGH
 Temperature:25.3DEG
 Operators:
 Test Date:2021-02-23

γ Range: 0 - 90DEG
 γ Interval: 1.0DEG
 Test System:EVERFINE GO-SPEX500_V1 SYSTEM V2.00.421
 Humidity:65.0%
 Test Distance:3.080m [K=1.0000]
 Remarks: Energy Efficient Lighting LTD.

ISOLUX DIAGRAM

Test:U:120.23V I:0.1001A P:11.549W PF:0.9594 Freq:59.98Hz Lamp Flux:923.807x1 lm		
NAME: AD-LED-4-S12W-5CCTWH-LREY-SQ	TYPE:普瑞	WEIGHT:
SPEC.:4000K 90	DIM.:	SERIAL No.:1
MFR.: ADS	SUR.:	Shielding Angle:



C Range: 0 - 360DEG
 C Interval: 22.5DEG
 Test Speed: HIGH
 Temperature:25.3DEG
 Operators:
 Test Date:2021-02-23

γ Range: 0 - 90DEG
 γ Interval: 1.0DEG
 Test System:EVERFINE GO-SPEX500_V1 SYSTEM V2.00.421
 Humidity:65.0%
 Test Distance:3.080m [K=1.0000]
 Remarks: Energy Efficient Lighting LTD.

LED Avg.L Report

Test:U:120.23V I:0.1001A P:11.549W PF:0.9594 Freq:59.98Hz Lamp Flux:923.807x1 lm		
NAME: AD-LED-4-S12W-5CCTWH-LREY-SQ	TYPE:普瑞	WEIGHT:
SPEC.:4000K 90	DIM.:	SERIAL No.:1
MFR.: ADS	SUR.:	Shielding Angle:

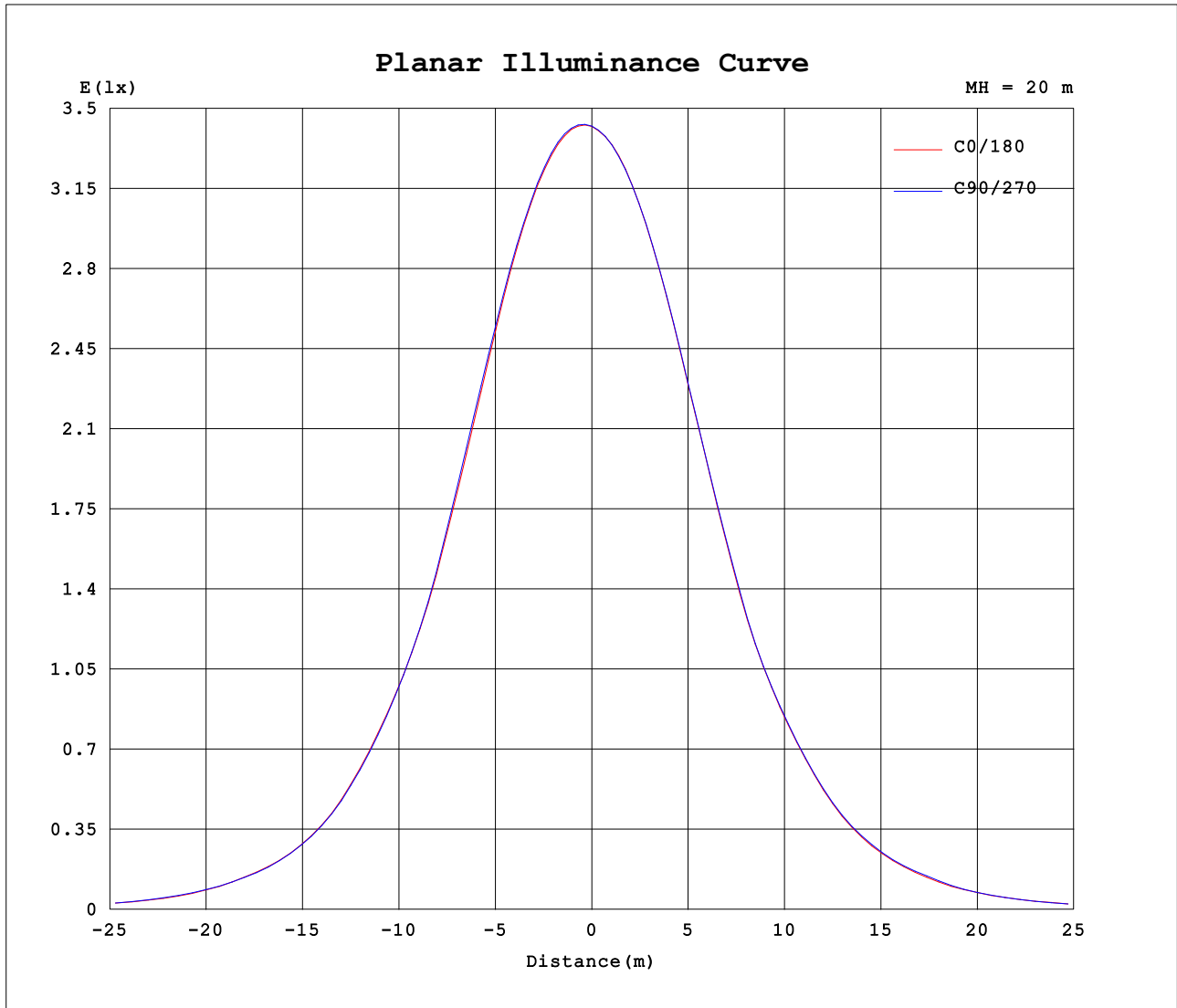
AvgL	cd/m2
L_0~180 (65) av	111
L_0~180 (75) av	73
L_0~180 (85) av	23
L_90~270 (65) av	117
L_90~270 (75) av	66
L_90~270 (85) av	10
L_45 (65) av	112
L_45 (75) av	72
L_45 (85) av	17

Standard: GB/T 29293-2012

C Range: 0 - 360DEG
 C Interval: 22.5DEG
 Test Speed: HIGH
 Temperature:25.3DEG
 Operators:
 Test Date:2021-02-23

γ Range: 0 - 90DEG
 γ Interval: 1.0DEG
 Test System:EVERFINE GO-SPEX500_V1 SYSTEM V2.00.421
 Humidity:65.0%
 Test Distance:3.080m [K=1.0000]
 Remarks: Energy Efficient Lighting LTD.

Planar Illuminance Curve



C Range: 0 - 360DEG
 C Interval: 22.5DEG
 Test Speed: HIGH
 Temperature: 25.3DEG
 Operators:
 Test Date: 2021-02-23

γ Range: 0 - 90DEG
 γ Interval: 1.0DEG
 Test System: EVERFINE GO-SPEX500_V1 SYSTEM V2.00.421
 Humidity: 65.0%
 Test Distance: 3.080m [K=1.0000]
 Remarks: Energy Efficient Lighting LTD.

LUMINOUS DISTRIBUTION INTENSITY DATA

Test:U:120.23V I:0.1001A P:11.549W PF:0.9594 Freq:59.98Hz Lamp Flux:923.807x1 lm		
NAME: AD-LED-4-S12W-5CCTWH-LREY-SQ	TYPE:普瑞	WEIGHT:
SPEC.:4000K 90	DIM.:	SERIAL No.:1
MFR.: ADS	SUR.:	Shielding Angle:

Table--1

UNIT: cd

C (DEG) \ γ (DEG)	0	22.5	45	67.5	90	112.5	135	157.5	180	202.5	225	247.5	270	292.5	315	337.5			
0	1369	1369	1369	1369	1369	1369	1369	1369	1369	1369	1369	1369	1369	1369	1369	1369			
5	1353	1362	1363	1362	1356	1348	1334	1322	1309	1301	1299	1299	1307	1318	1331	1342			
10	1252	1265	1269	1270	1256	1243	1220	1196	1169	1150	1147	1152	1170	1189	1212	1233			
15	1065	1081	1086	1090	1075	1056	1028	1000	963	938	935	943	964	986	1018	1043			
20	829	841	847	853	839	820	793	766	727	700	696	707	731	752	786	812			
25	604	609	612	617	604	589	570	552	522	499	497	505	523	542	571	592			
30	426	431	431	433	422	409	394	383	363	347	346	352	365	378	401	416			
35	269	273	274	276	267	257	249	243	231	222	221	226	234	240	253	262			
40	167	168	169	170	165	159	153	151	145	139	138	142	149	152	156	163			
45	97.6	98.3	98.5	101	98.3	94.9	89.9	88.3	83.9	80.3	80.4	82.4	85.1	87.3	89.6	93.4			
50	51.4	51.5	52.6	54.1	53.2	51.4	49.6	48.9	46.2	43.2	43.1	44.5	46.0	46.0	47.9	49.8			
55	23.0	23.3	23.7	24.8	24.5	23.6	22.3	22.6	21.4	19.7	19.4	19.3	20.9	20.2	21.2	21.5			
60	10.7	10.9	10.4	11.3	11.4	11.3	10.0	10.3	9.35	8.94	9.04	10.4	10.5	10.2	9.23	10.4			
65	5.15	5.26	5.31	5.63	5.76	5.77	5.40	5.34	5.25	5.28	5.20	5.28	5.21	5.10	5.08	5.08			
70	3.52	3.56	3.60	3.70	3.76	3.80	3.75	3.77	3.71	3.66	3.60	3.58	3.57	3.52	3.50	3.47			
75	2.01	2.06	2.05	1.99	1.90	2.01	2.16	2.25	2.17	2.10	2.06	1.91	1.90	1.89	1.97	1.96			
80	0.77	0.77	0.70	0.65	0.63	0.67	0.75	0.86	0.85	0.83	0.75	0.68	0.65	0.67	0.72	0.76			
85	0.21	0.26	0.16	0.11	0.10	0.11	0.17	0.29	0.24	0.28	0.17	0.11	0.10	0.11	0.17	0.26			
90	0.01	0.01	0.01	0.01	0.01	0.01	0.01	0.01	0.01	0.01	0.02	0.02	0.01	0.02	0.01	0.01			

C Range: 0 - 360DEG
 C Interval: 22.5DEG
 Test Speed: HIGH
 Temperature:25.3DEG
 Operators:
 Test Date:2021-02-23

γ Range: 0 - 90DEG
 γ Interval: 1.0DEG
 Test System:EVERFINE GO-SPEX500_V1 SYSTEM V2.00.421
 Humidity:65.0%
 Test Distance:3.080m [K=1.0000]
 Remarks: Energy Efficient Lighting LTD.