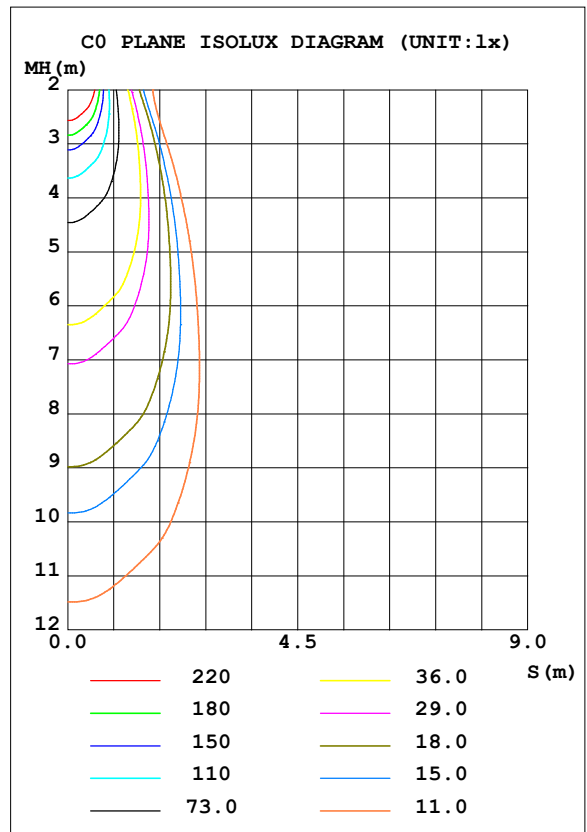
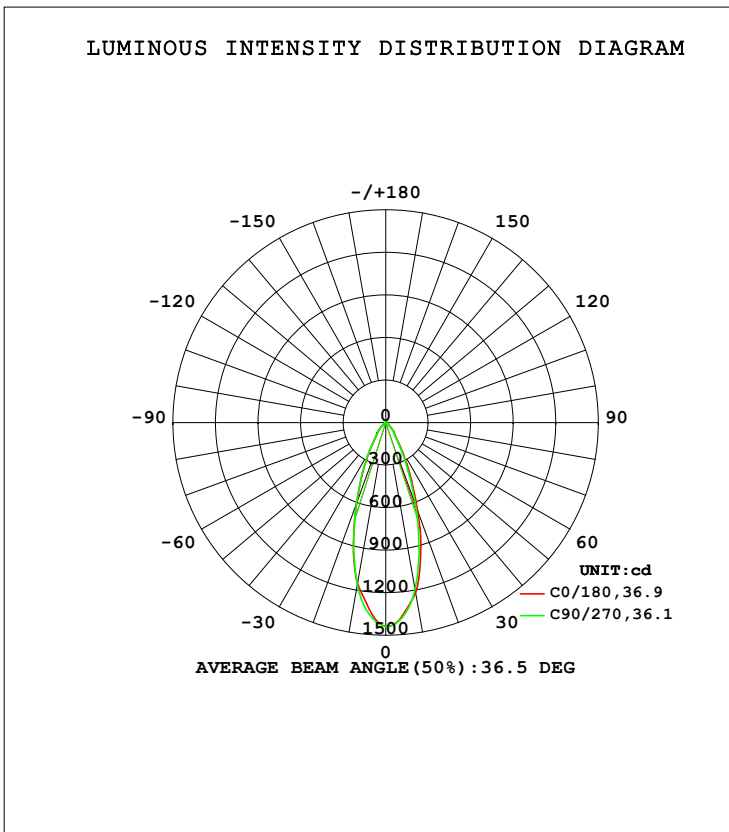


LUMINAIRE PHOTOMETRIC TEST REPORT

Test:U:120.26V I:0.1093A P:11.509W PF:0.8758 Freq:59.98Hz Lamp Flux:711.089x1 lm		
NAME: AD-LED-4-S12W-DTWWH-LREY-SQ-Bridgelux	TYPE:	WEIGHT:
SPEC.:3000K 90	DIM.:	SERIAL No.:1
MFR.: ADS	SUR.:	Shielding Angle:

DATA OF LAMP		PHOTOMETRIC DATA Eff: 61.79 lm/W			
MODEL		I _{max} (cd)	1439	S/MH (C0/180)	0.58
NOMINAL POWER (W)	12	LOR (%)	100.0	S/MH (C90/270)	0.58
RATED VOLTAGE (V)	120	TOTAL FLUX (lm)	711.09	η UP, DN (C0-180)	0.0, 50.2
NOMINAL FLUX (lm)	711.089	CIE CLASS	DIRECT	η UP, DN (C180-360)	0.0, 49.8
LAMPS INSIDE	1	η up (%)	0.0	CIBSE SHR NOM	0.50
TEST VOLTAGE (V)	120	η down (%)	100.0	CIBSE SHR MAX	0.65



C Range: 0 - 360DEG
 C Interval: 22.5DEG
 Test Speed: HIGH
 Temperature: 25.3DEG
 Operators:
 Test Date: 2021-02-23

γ Range: 0 - 90DEG
 γ Interval: 1.0DEG
 Test System: EVERFINE GO-SPEX500_V1 SYSTEM V2.00.421
 Humidity: 65.0%
 Test Distance: 3.080m [K=1.0000]
 Remarks: Energy Efficient Lighting LTD.

ZONAL FLUX DIAGRAM

ZONAL FLUX DIAGRAM:

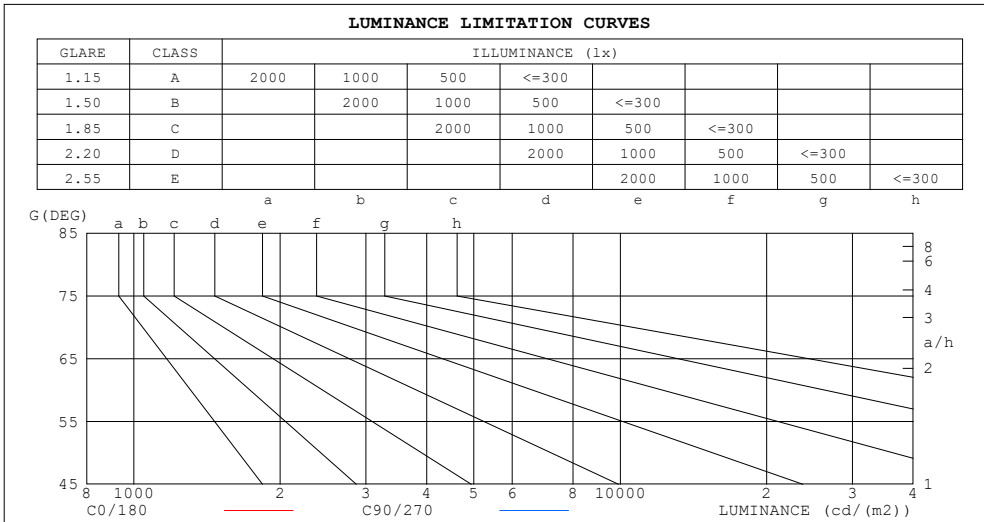
γ	C0	C45	C90	C135	C180	C225	C270	C315	γ	Φ zone	Φ total	%lum, lamp
10	1219	1213	1193	1144	1150	1144	1161	1185	0- 10	123.6	123.6	17.4,17.4
20	659.2	669.6	617.9	628.8	603.5	614.0	606.3	658.8	10- 20	250.3	373.9	52.6,52.6
30	235.1	229.7	214.8	231.7	228.2	236.5	234.0	257.8	20- 30	183.7	557.5	78.4,78.4
40	95.26	96.36	86.46	96.72	99.46	96.34	88.10	96.98	30- 40	88.03	645.6	90.8,90.8
50	30.44	30.13	27.52	31.17	30.38	31.63	28.58	31.62	40- 50	45.83	691.4	97.2,97.2
60	6.246	6.293	6.080	6.483	6.569	6.550	6.106	6.461	50- 60	13.33	704.7	99.1,99.1
70	3.116	2.975	3.029	3.087	3.140	2.934	2.774	2.819	60- 70	4.426	709.2	99.7,99.7
80	0.5618	0.4966	0.4432	0.5317	0.6214	0.5626	0.4895	0.5280	70- 80	1.719	710.9	100,100
90	0.0139	0.0080	0.0144	0.0114	0.0198	0.0140	0.0120	0.0094	80- 90	0.1988	711.1	100,100
100									90-100			
110									100-110			
120									110-120			
130									120-130			
140									130-140			
150									140-150			
160									150-160			
170									160-170			
180									170-180			
DEG	LUMINOUS INTENSITY:cd									UNIT:lm		

C Range: 0 - 360DEG
 C Interval: 22.5DEG
 Test Speed: HIGH
 Temperature:25.3DEG
 Operators:
 Test Date:2021-02-23

γ Range: 0 - 90DEG
 γ Interval: 1.0DEG
 Test System:EVERFINE GO-SPEX500_V1 SYSTEM V2.00.421
 Humidity:65.0%
 Test Distance:3.080m [K=1.0000]
 Remarks: Energy Efficient Lighting LTD.

LUMINANCE LIMITATION CURVES

Test:U:120.26V I:0.1093A P:11.509W PF:0.8758 Freq:59.98Hz Lamp Flux:711.089x1 lm		
NAME: AD-LED-4-S12W-DTWWH-LREY-SQ-Bridgelux	TYPE:	WEIGHT:
SPEC.:3000K 90	DIM.:	SERIAL No.:1
MFR.: ADS	SUR.:	Shielding Angle:



LUMINANCE cd/(m2)		
G (DEG)	C0/180	C90/270
85	16	7
80	29	23
75	60	52
70	83	80
65	96	90
60	113	109
55	199	189
50	430	385
45	748	690

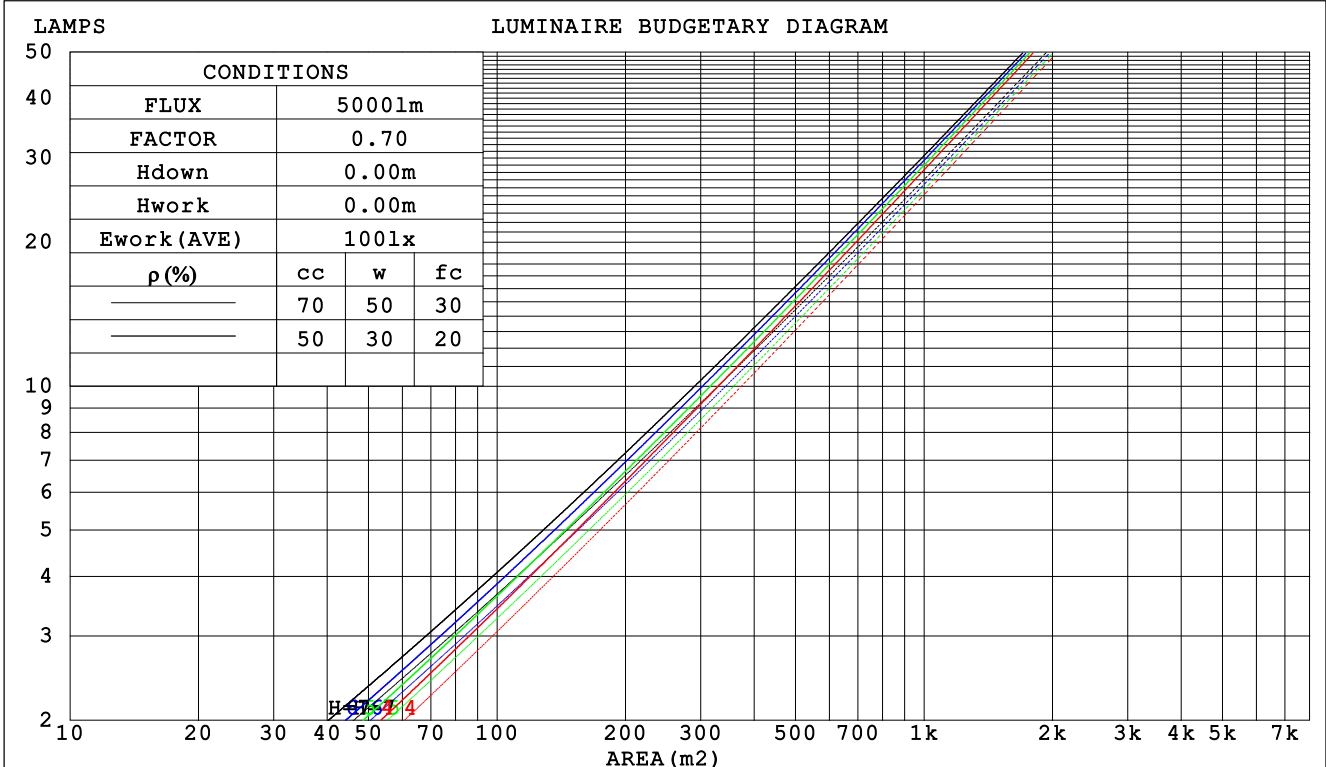
C Range: 0 - 360DEG
 C Interval: 22.5DEG
 Test Speed: HIGH
 Temperature:25.3DEG
 Operators:
 Test Date:2021-02-23

γ Range: 0 - 90DEG
 γ Interval: 1.0DEG
 Test System:EVERFINE GO-SPEX500_V1 SYSTEM V2.00.421
 Humidity:65.0%
 Test Distance:3.080m [K=1.0000]
 Remarks: Energy Efficient Lighting LTD.

CU AND LUMINAIRE BUDGETARY ESTIMATE DIAGRAM

Test:U:120.26V I:0.1093A P:11.509W PF:0.8758 Freq:59.98Hz Lamp Flux:711.089x1 lm		
NAME: AD-LED-4-S12W-DTWWH-LREY-SQ-Bridgelux	TYPE:	WEIGHT:
SPEC.:3000K 90	DIM.:	SERIAL No.:1
MFR.: ADS	SUR.:	Shielding Angle:

ρcc	80%			70%			50%			30%			10%			0
ρw	50%	30%	10%	50%	30%	10%	50%	30%	10%	50%	30%	10%	50%	30%	10%	0
ρfc	20%			20%			20%			20%			20%			0
RCR	RCR:Room Cavity Ratio															
	Coefficients of Utilization(CU)															
0.0	1.19	1.19	1.19	1.16	1.16	1.16	1.11	1.11	1.11	1.06	1.06	1.06	1.02	1.02	1.02	1.00
1.0	1.11	1.09	1.07	1.09	1.07	1.05	1.05	1.03	1.02	1.01	1.00	.99	.98	.97	.96	.94
2.0	1.04	1.00	.97	1.02	.99	.96	.99	.96	.94	.96	.94	.92	.94	.92	.90	.88
3.0	.98	.93	.89	.96	.92	.89	.94	.90	.87	.91	.88	.86	.89	.87	.85	.83
4.0	.92	.87	.83	.91	.86	.83	.89	.85	.82	.87	.83	.81	.85	.82	.80	.78
5.0	.87	.82	.78	.86	.81	.77	.84	.80	.77	.83	.79	.76	.81	.78	.75	.74
6.0	.82	.77	.73	.82	.76	.73	.80	.76	.72	.79	.75	.72	.77	.74	.71	.70
7.0	.78	.73	.69	.78	.72	.69	.76	.72	.68	.75	.71	.68	.74	.70	.68	.66
8.0	.74	.69	.65	.74	.69	.65	.73	.68	.65	.72	.68	.64	.71	.67	.64	.63
9.0	.71	.66	.62	.70	.65	.62	.70	.65	.62	.69	.64	.61	.68	.64	.61	.60
10.0	.68	.62	.59	.67	.62	.59	.67	.62	.59	.66	.62	.59	.65	.61	.58	.57



C Range: 0 - 360DEG
 C Interval: 22.5DEG
 Test Speed: HIGH
 Temperature:25.3DEG
 Operators:
 Test Date:2021-02-23

γ Range: 0 - 90DEG
 γ Interval: 1.0DEG
 Test System:EVERFINE GO-SPEX500_V1 SYSTEM V2.00.421
 Humidity:65.0%
 Test Distance:3.080m [K=1.0000]
 Remarks: Energy Efficient Lighting LTD.

WEC AND CCEC

Test:U:120.26V I:0.1093A P:11.509W PF:0.8758 Freq:59.98Hz Lamp Flux:711.089x1 lm		
NAME: AD-LED-4-S12W-DTWWH-LREY-SQ-Bridgelux	TYPE:	WEIGHT:
SPEC.:3000K 90	DIM.:	SERIAL No.:1
MFR.: ADS	SUR.:	Shielding Angle:

ρcc	80%			70%			50%			30%			10%			0
ρw	50%	30%	10%	50%	30%	10%	50%	30%	10%	50%	30%	10%	50%	30%	10%	0
ρfc	20%			20%			20%			20%			20%			0
RCR	RCR:Room Cavity Ratio						Wall Exitance Coefficients (WEC)									
0.0																
1.0	.169	.096	.030	.162	.092	.029	.149	.086	.027	.138	.080	.026	.127	.074	.024	
2.0	.161	.088	.027	.155	.085	.026	.145	.080	.025	.135	.076	.024	.126	.071	.022	
3.0	.152	.081	.024	.147	.079	.024	.139	.075	.023	.130	.071	.022	.123	.068	.021	
4.0	.144	.075	.022	.140	.073	.022	.133	.070	.021	.125	.067	.020	.119	.065	.020	
5.0	.137	.070	.020	.134	.069	.020	.127	.066	.019	.121	.064	.019	.115	.061	.018	
6.0	.130	.065	.019	.127	.064	.019	.122	.062	.018	.116	.060	.018	.111	.058	.017	
7.0	.124	.061	.017	.122	.061	.017	.116	.059	.017	.112	.057	.017	.107	.056	.016	
8.0	.119	.058	.016	.116	.057	.016	.112	.056	.016	.107	.054	.016	.103	.053	.015	
9.0	.114	.055	.015	.111	.054	.015	.107	.053	.015	.103	.052	.015	.100	.051	.015	
10.0	.109	.052	.014	.107	.052	.014	.103	.051	.014	.100	.050	.014	.096	.049	.014	

ρcc	80%			70%			50%			30%			10%			0
ρw	50%	30%	10%	50%	30%	10%	50%	30%	10%	50%	30%	10%	50%	30%	10%	0
ρfc	20%			20%			20%			20%			20%			0
RCR	RCR:Room Cavity Ratio						Ceiling Cavity Exitance Coefficients (CCEC)									
0.0	.190	.190	.190	.163	.163	.163	.111	.111	.111	.064	.064	.064	.020	.020	.020	
1.0	.171	.157	.146	.146	.135	.125	.100	.093	.087	.057	.054	.050	.018	.017	.016	
2.0	.155	.133	.114	.133	.114	.098	.091	.079	.069	.052	.046	.040	.017	.015	.013	
3.0	.142	.114	.091	.122	.098	.079	.083	.068	.055	.048	.040	.033	.015	.013	.011	
4.0	.131	.099	.074	.112	.085	.064	.077	.059	.045	.045	.035	.027	.014	.011	.009	
5.0	.122	.087	.061	.105	.075	.053	.072	.053	.037	.042	.031	.022	.013	.010	.007	
6.0	.114	.077	.051	.098	.067	.045	.068	.047	.031	.039	.028	.019	.013	.009	.006	
7.0	.107	.070	.043	.092	.060	.038	.064	.042	.027	.037	.025	.016	.012	.008	.005	
8.0	.101	.063	.037	.087	.055	.032	.060	.039	.023	.035	.023	.014	.011	.007	.005	
9.0	.096	.058	.032	.083	.050	.028	.057	.035	.020	.033	.021	.012	.011	.007	.004	
10.0	.091	.054	.028	.079	.046	.025	.055	.033	.018	.032	.019	.010	.010	.006	.003	

C Range: 0 - 360DEG
 C Interval: 22.5DEG
 Test Speed: HIGH
 Temperature:25.3DEG
 Operators:
 Test Date:2021-02-23

γ Range: 0 - 90DEG
 γ Interval: 1.0DEG
 Test System:EVERFINE GO-SPEX500_V1 SYSTEM V2.00.421
 Humidity:65.0%
 Test Distance:3.080m [K=1.0000]
 Remarks: Energy Efficient Lighting LTD.

UGR(Unified Glare Rating) Table

Test:U:120.26V I:0.1093A P:11.509W PF:0.8758 Freq:59.98Hz Lamp Flux:711.089x1 lm		
NAME: AD-LED-4-S12W-DTWWH-LREY-SQ-Bridgelux	TYPE:	WEIGHT:
SPEC.:3000K 90	DIM.:	SERIAL No.:1
MFR.: ADS	SUR.:	Shielding Angle:

ceiling/cavity	0.7	0.7	0.5	0.5	0.3	0.7	0.7	0.5	0.5	0.3
walls	0.5	0.3	0.5	0.3	0.3	0.5	0.3	0.5	0.3	0.3
working plane	0.2	0.2	0.2	0.2	0.2	0.2	0.2	0.2	0.2	0.2
Room dimensions	Viewed crosswise					Viewed endwise				
x = 2H y = 2H	6.5	7.4	6.7	7.5	7.7	6.1	7.0	6.3	7.2	7.3
3H	6.4	7.2	6.7	7.4	7.6	6.0	6.9	6.3	7.0	7.2
4H	6.4	7.1	6.6	7.4	7.6	6.0	6.8	6.3	7.0	7.2
6H	6.3	7.0	6.6	7.2	7.5	5.9	6.6	6.2	6.9	7.1
8H	6.2	6.9	6.6	7.2	7.4	5.9	6.6	6.2	6.8	7.1
12H	6.2	6.9	6.5	7.1	7.4	5.8	6.5	6.1	6.8	7.0
4H 2H	6.3	7.1	6.6	7.3	7.5	5.9	6.7	6.2	6.9	7.1
3H	6.3	6.9	6.6	7.2	7.5	5.9	6.6	6.2	6.8	7.1
4H	6.2	6.8	6.6	7.1	7.4	5.9	6.5	6.2	6.8	7.1
6H	6.1	6.7	6.5	7.0	7.3	5.8	6.3	6.1	6.6	7.0
8H	6.1	6.6	6.5	6.9	7.3	5.7	6.2	6.1	6.6	6.9
12H	6.0	6.5	6.4	6.9	7.2	5.7	6.1	6.1	6.5	6.9
8H 4H	6.1	6.6	6.5	6.9	7.3	5.7	6.2	6.1	6.6	6.9
6H	6.0	6.4	6.4	6.8	7.2	5.6	6.0	6.1	6.4	6.8
8H	6.0	6.3	6.4	6.7	7.2	5.6	5.9	6.0	6.4	6.8
12H	5.9	6.2	6.4	6.7	7.1	5.5	5.8	6.0	6.3	6.7
12H 4H	6.0	6.5	6.4	6.9	7.2	5.7	6.1	6.1	6.5	6.9
6H	6.0	6.3	6.4	6.7	7.2	5.6	5.9	6.0	6.4	6.8
8H	5.9	6.2	6.4	6.7	7.1	5.5	5.8	6.0	6.3	6.7
Variations with the observer position at spacings:										
S = 1.0H	+ 2.2 / - 6.1					+ 2.2 / - 6.0				
1.5H	+ 2.8 / - 5.4					+ 2.8 / - 5.2				
2.0H	+ 5.2 / - 5.3					+ 5.1 / - 5.4				

CIE Pub.117, 711.1 lm Total Lamp Luminous Flux Correct (8log(F/F0) = -1.2)
 Area: 0.111111 m2

C Range: 0 - 360DEG
 C Interval: 22.5DEG
 Test Speed: HIGH
 Temperature:25.3DEG
 Operators:
 Test Date:2021-02-23

γ Range: 0 - 90DEG
 γ Interval: 1.0DEG
 Test System:EVERFINE GO-SPEX500_V1 SYSTEM V2.00.421
 Humidity:65.0%
 Test Distance:3.080m [K=1.0000]
 Remarks: Energy Efficient Lighting LTD.

UTILIZATION FACTORS TABLE

Test:U:120.26V I:0.1093A P:11.509W PF:0.8758 Freq:59.98Hz Lamp Flux:711.089x1 lm		
NAME: AD-LED-4-S12W-DTWWH-LREY-SQ-Bridgelux	TYPE:	WEIGHT:
SPEC.:3000K 90	DIM.:	SERIAL No.:1
MFR.: ADS	SUR.:	Shielding Angle:

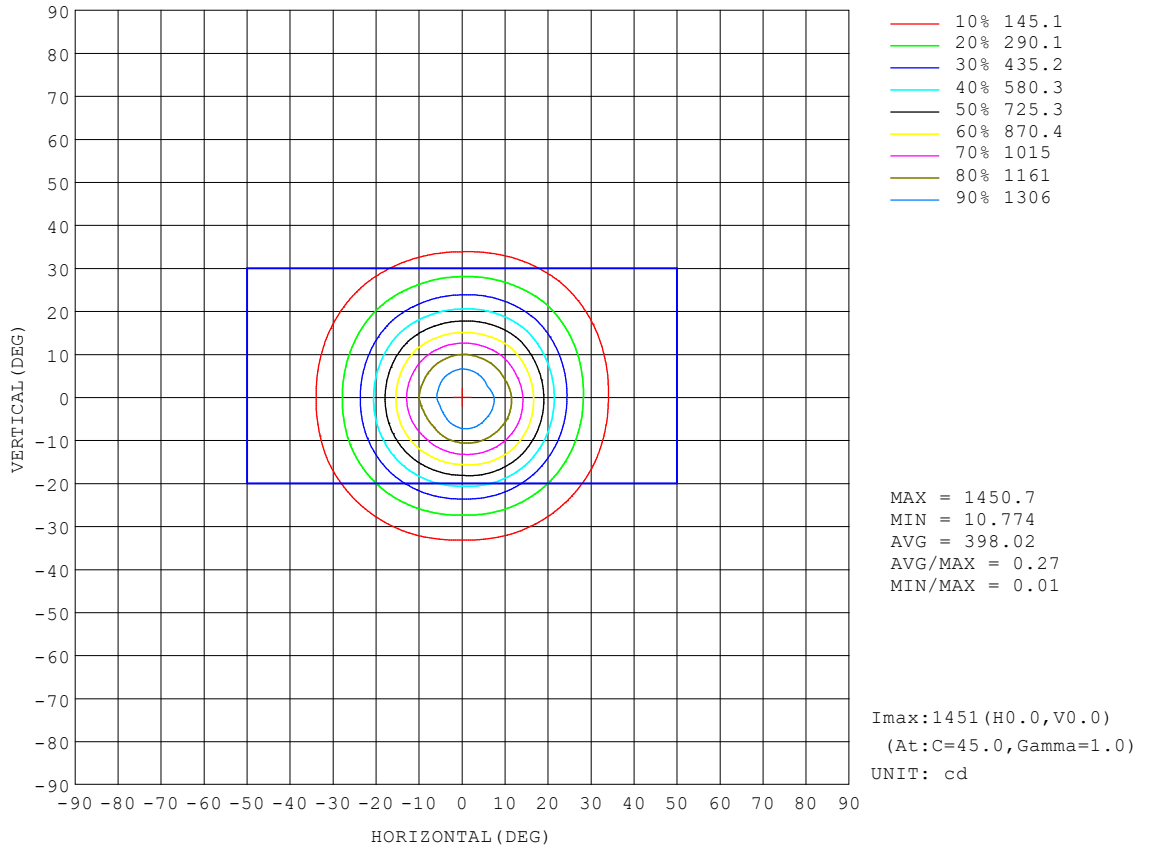
REFLECTANCE										
Ceiling	0.8	0.8	0.8	0.7	0.7	0.7	0.5	0.5	0.5	0
Walls	0.7	0.5	0.3	0.7	0.5	0.3	0.7	0.5	0.3	0
Working plane	0.2	0.2	0.2	0.2	0.2	0.2	0.2	0.2	0.2	0
ROOM INDEX	UTILIZATION FACTORS (PERCENT) $k(RI) \times RCR = 5$									
k = 0.60	86	79	75	85	79	75	84	79	75	71
0.80	93	87	83	93	87	83	92	86	83	79
1.00	98	92	89	97	92	88	96	92	88	84
1.25	102	97	94	101	97	93	99	95	92	88
1.50	105	100	97	104	100	96	102	98	95	91
2.00	108	104	101	107	103	100	104	101	98	93
2.50	110	106	103	108	105	102	105	102	100	94
3.00	111	108	105	110	107	104	106	104	102	95
4.00	114	111	108	111	109	107	108	106	104	97
5.00	115	112	111	113	111	109	109	107	106	98
ROOM INDEX	UF(total)									Direct
According to DIN EN 13032-2 2004			Suspended				SHRNOM = 1.25			

C Range: 0 - 360DEG
 C Interval: 22.5DEG
 Test Speed: HIGH
 Temperature:25.3DEG
 Operators:
 Test Date:2021-02-23

γ Range: 0 - 90DEG
 γ Interval: 1.0DEG
 Test System:EVERFINE GO-SPEX500_V1 SYSTEM V2.00.421
 Humidity:65.0%
 Test Distance:3.080m [K=1.0000]
 Remarks: Energy Efficient Lighting LTD.

ISOCANDELA DIAGRAM

Test:U:120.26V I:0.1093A P:11.509W PF:0.8758 Freq:59.98Hz Lamp Flux:711.089x1 lm		
NAME: AD-LED-4-S12W-DTWWH-LREY-SQ-Bridgelux	TYPE:	WEIGHT:
SPEC.:3000K 90	DIM.:	SERIAL No.:1
MFR.: ADS	SUR.:	Shielding Angle:

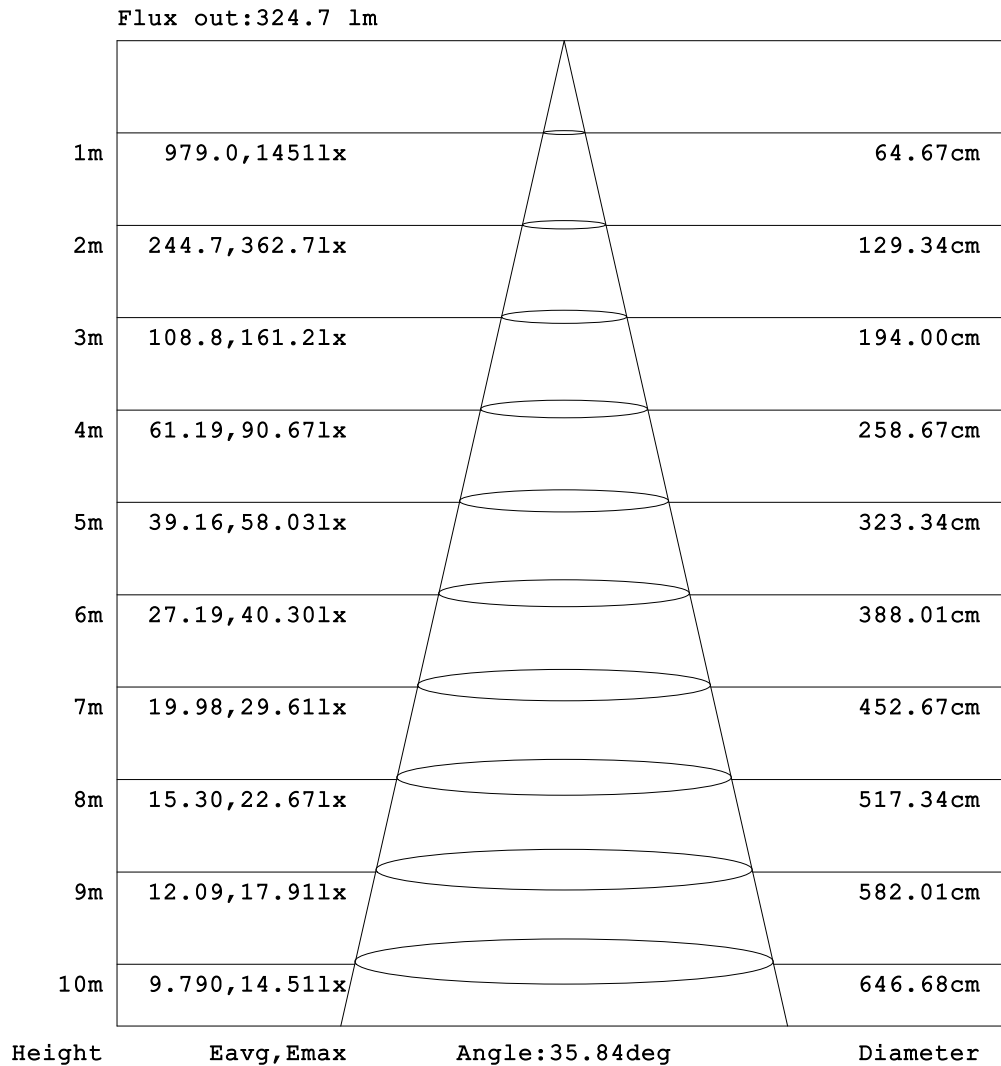


C Range: 0 - 360DEG
 C Interval: 22.5DEG
 Test Speed: HIGH
 Temperature:25.3DEG
 Operators:
 Test Date:2021-02-23

γ Range: 0 - 90DEG
 γ Interval: 1.0DEG
 Test System:EVERFINE GO-SPEX500_V1 SYSTEM V2.00.421
 Humidity:65.0%
 Test Distance:3.080m [K=1.0000]
 Remarks: Energy Efficient Lighting LTD.

AAI Figure

Test:U:120.26V I:0.1093A P:11.509W PF:0.8758 Freq:59.98Hz Lamp Flux:711.089x1 lm		
NAME: AD-LED-4-S12W-DTWWH-LREY-SQ-Bridgelux	TYPE:	WEIGHT:
SPEC.:3000K 90	DIM.:	SERIAL No.:1
MFR.: ADS	SUR.:	Shielding Angle:



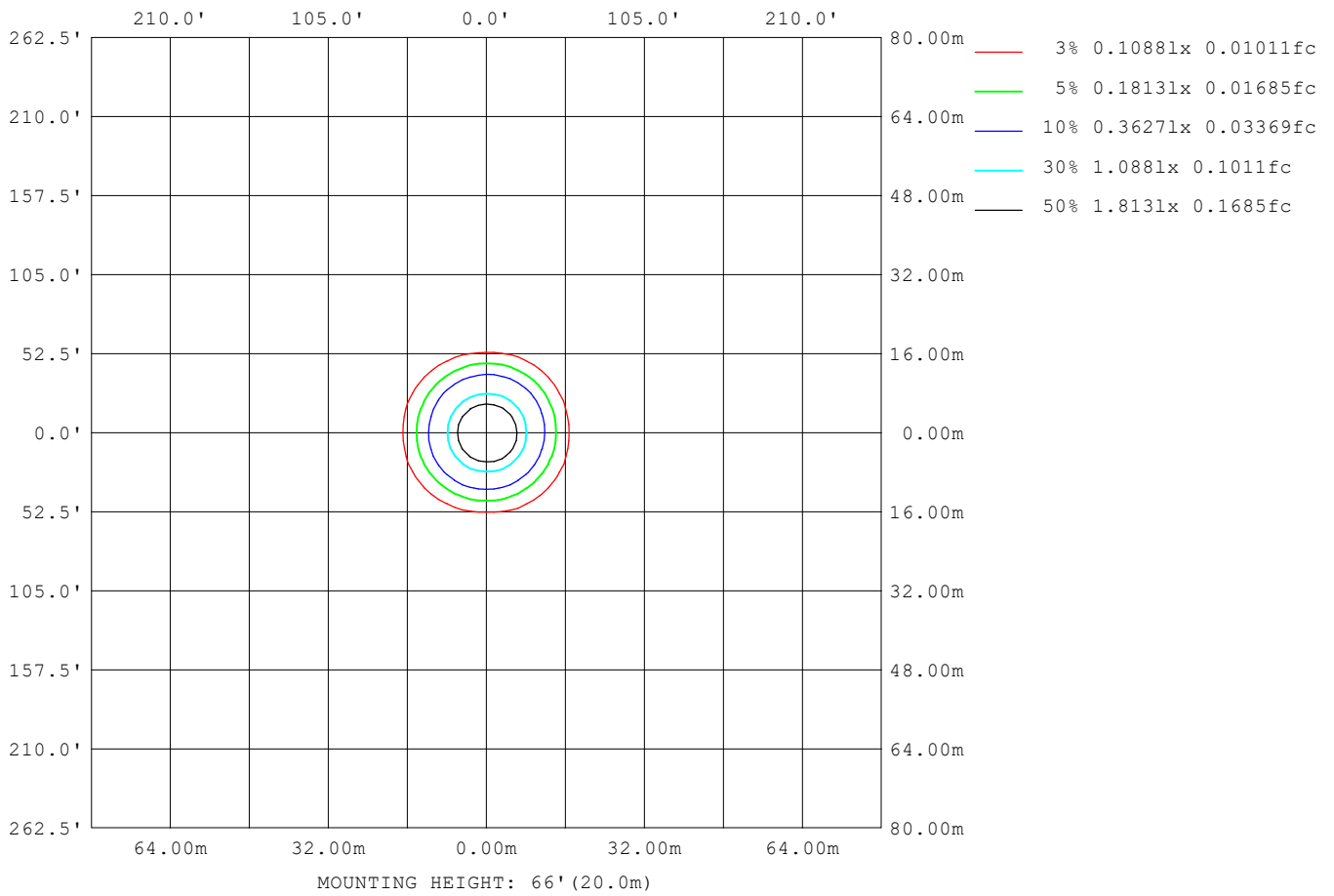
Note:The Curves indicate the illuminated area and the average illumination when the luminaire is at different distance.

C Range: 0 - 360DEG
 C Interval: 22.5DEG
 Test Speed: HIGH
 Temperature:25.3DEG
 Operators:
 Test Date:2021-02-23

γ Range: 0 - 90DEG
 γ Interval: 1.0DEG
 Test System:EVERFINE GO-SPEX500_V1 SYSTEM V2.00.421
 Humidity:65.0%
 Test Distance:3.080m [K=1.0000]
 Remarks: Energy Efficient Lighting LTD.

ISOLUX DIAGRAM

Test:U:120.26V I:0.1093A P:11.509W PF:0.8758 Freq:59.98Hz Lamp Flux:711.089x1 lm		
NAME: AD-LED-4-S12W-DTWWH-LREY-SQ-Bridgelux	TYPE:	WEIGHT:
SPEC.:3000K 90	DIM.:	SERIAL No.:1
MFR.: ADS	SUR.:	Shielding Angle:



C Range: 0 - 360DEG
 C Interval: 22.5DEG
 Test Speed: HIGH
 Temperature:25.3DEG
 Operators:
 Test Date:2021-02-23

γ Range: 0 - 90DEG
 γ Interval: 1.0DEG
 Test System:EVERFINE GO-SPEX500_V1 SYSTEM V2.00.421
 Humidity:65.0%
 Test Distance:3.080m [K=1.0000]
 Remarks: Energy Efficient Lighting LTD.

LED Avg.L Report

Test:U:120.26V I:0.1093A P:11.509W PF:0.8758 Freq:59.98Hz Lamp Flux:711.089x1 lm		
NAME: AD-LED-4-S12W-DTWWH-LREY-SQ-Bridgelux	TYPE:	WEIGHT:
SPEC.:3000K 90	DIM.:	SERIAL No.:1
MFR.: ADS	SUR.:	Shielding Angle:

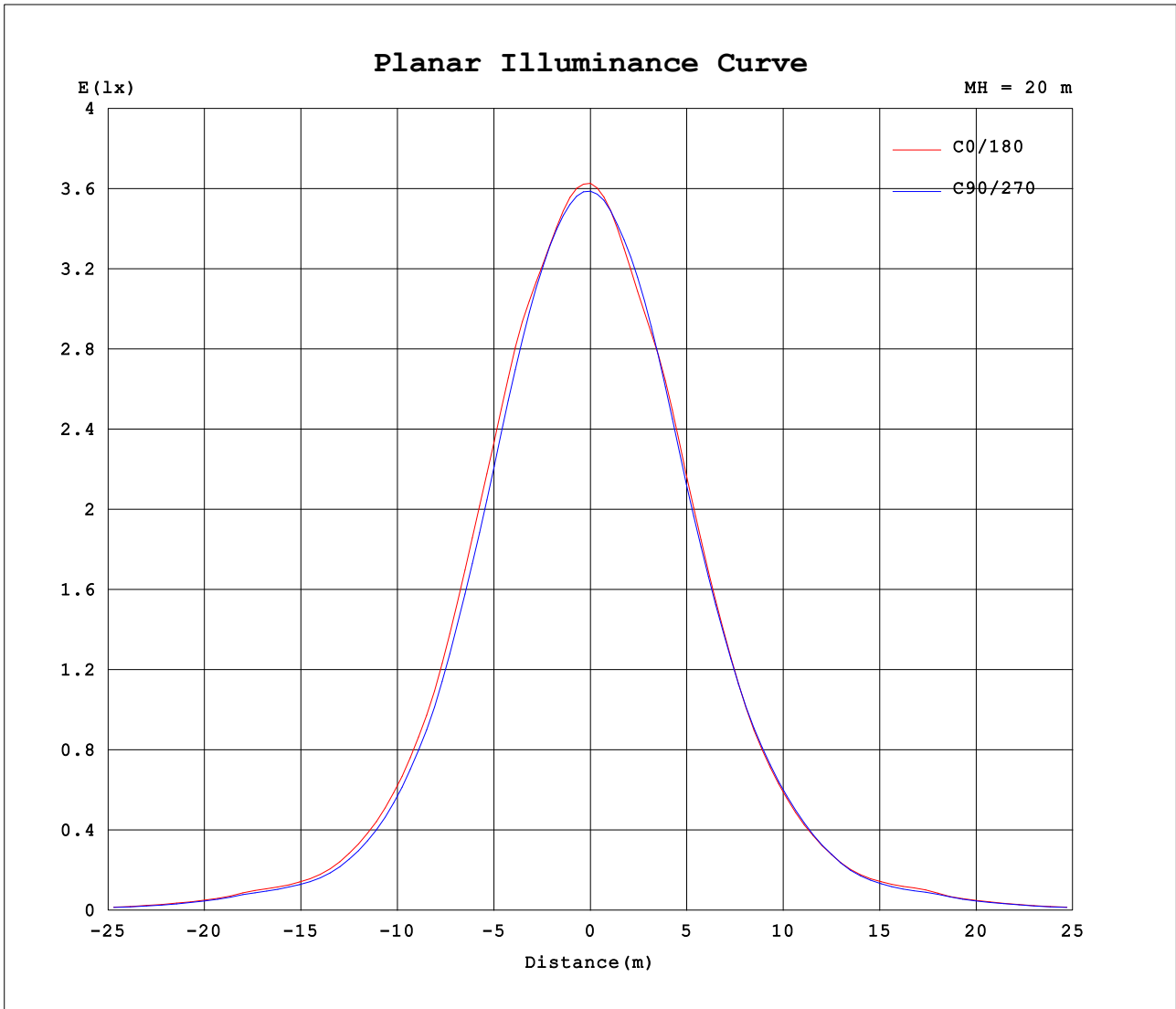
AvgL	cd/m2
L_0~180 (65) av	96
L_0~180 (75) av	61
L_0~180 (85) av	17
L_90~270 (65) av	88
L_90~270 (75) av	53
L_90~270 (85) av	9
L_45 (65) av	97
L_45 (75) av	58
L_45 (85) av	13

Standard: GB/T 29293-2012

C Range: 0 - 360DEG
 C Interval: 22.5DEG
 Test Speed: HIGH
 Temperature:25.3DEG
 Operators:
 Test Date:2021-02-23

γ Range: 0 - 90DEG
 γ Interval: 1.0DEG
 Test System:EVERFINE GO-SPEX500_V1 SYSTEM V2.00.421
 Humidity:65.0%
 Test Distance:3.080m [K=1.0000]
 Remarks: Energy Efficient Lighting LTD.

Planar Illuminance Curve



C Range: 0 - 360DEG
 C Interval: 22.5DEG
 Test Speed: HIGH
 Temperature: 25.3DEG
 Operators:
 Test Date: 2021-02-23

γ Range: 0 - 90DEG
 γ Interval: 1.0DEG
 Test System: EVERFINE GO-SPEX500_V1 SYSTEM V2.00.421
 Humidity: 65.0%
 Test Distance: 3.080m [K=1.0000]
 Remarks: Energy Efficient Lighting LTD.

LUMINOUS DISTRIBUTION INTENSITY DATA

Test:U:120.26V I:0.1093A P:11.509W PF:0.8758 Freq:59.98Hz Lamp Flux:711.089x1 lm		
NAME: AD-LED-4-S12W-DTWWH-LREY-SQ-Bridgelux	TYPE:	WEIGHT:
SPEC.:3000K 90	DIM.:	SERIAL No.:1
MFR.: ADS	SUR.:	Shielding Angle:

Table--1

UNIT: cd

C (DEG)\ γ (DEG)	0	22.5	45	67.5	90	112.5	135	157.5	180	202.5	225	247.5	270	292.5	315	337.5			
0	1438	1438	1438	1438	1438	1438	1438	1438	1438	1438	1438	1438	1438	1438	1438	1438			
5	1366	1375	1379	1384	1376	1364	1343	1332	1324	1328	1341	1349	1356	1358	1359	1357			
10	1219	1224	1213	1210	1193	1171	1144	1149	1150	1143	1144	1148	1161	1168	1185	1200			
15	959	975	968	941	911	903	905	904	884	882	886	870	874	894	935	948			
20	659	668	670	649	618	625	629	622	604	604	614	603	606	631	659	660			
25	406	405	401	393	379	388	397	396	380	385	394	388	391	409	426	421			
30	235	234	230	225	215	224	232	237	228	230	236	231	234	245	258	250			
35	130	131	128	126	119	126	130	135	129	132	132	129	126	134	140	137			
40	95.3	98.2	96.4	92.8	86.5	91.0	96.7	101	99.5	102	96.3	91.8	88.1	93.8	97.0	97.5			
45	58.2	59.2	58.7	57.4	54.3	57.2	59.2	59.2	56.8	58.0	58.8	55.8	54.5	56.7	59.5	59.0			
50	30.4	30.9	30.1	29.2	27.5	29.6	31.2	31.7	30.4	31.0	31.6	30.0	28.6	30.2	31.6	31.1			
55	12.6	12.7	12.6	12.5	12.1	12.7	13.0	13.2	13.0	13.1	13.3	12.7	12.5	12.9	13.4	12.9			
60	6.25	6.30	6.29	6.18	6.08	6.35	6.48	6.56	6.57	6.59	6.55	6.24	6.11	6.28	6.46	6.28			
65	4.47	4.58	4.53	4.35	4.24	4.51	4.63	4.64	4.55	4.65	4.55	4.22	4.01	4.21	4.43	4.45			
70	3.12	3.02	2.97	2.99	3.03	3.04	3.09	3.26	3.14	3.01	2.93	2.81	2.77	2.72	2.82	2.91			
75	1.71	1.67	1.62	1.53	1.51	1.57	1.71	1.77	1.80	1.74	1.70	1.58	1.56	1.52	1.58	1.61			
80	0.56	0.56	0.50	0.45	0.44	0.47	0.53	0.61	0.62	0.61	0.56	0.51	0.49	0.49	0.53	0.55			
85	0.16	0.18	0.11	0.08	0.07	0.08	0.12	0.22	0.17	0.22	0.14	0.11	0.10	0.10	0.13	0.19			
90	0.01	0.01	0.01	0.01	0.01	0.01	0.01	0.02	0.02	0.02	0.01	0.01	0.01	0.01	0.01	0.01			

C Range: 0 - 360DEG
 C Interval: 22.5DEG
 Test Speed: HIGH
 Temperature:25.3DEG
 Operators:
 Test Date:2021-02-23

 γ Range: 0 - 90DEG
 γ Interval: 1.0DEG
 Test System:EVERFINE GO-SPEX500_V1 SYSTEM V2.00.421
 Humidity:65.0%
 Test Distance:3.080m [K=1.0000]
 Remarks: Energy Efficient Lighting LTD.