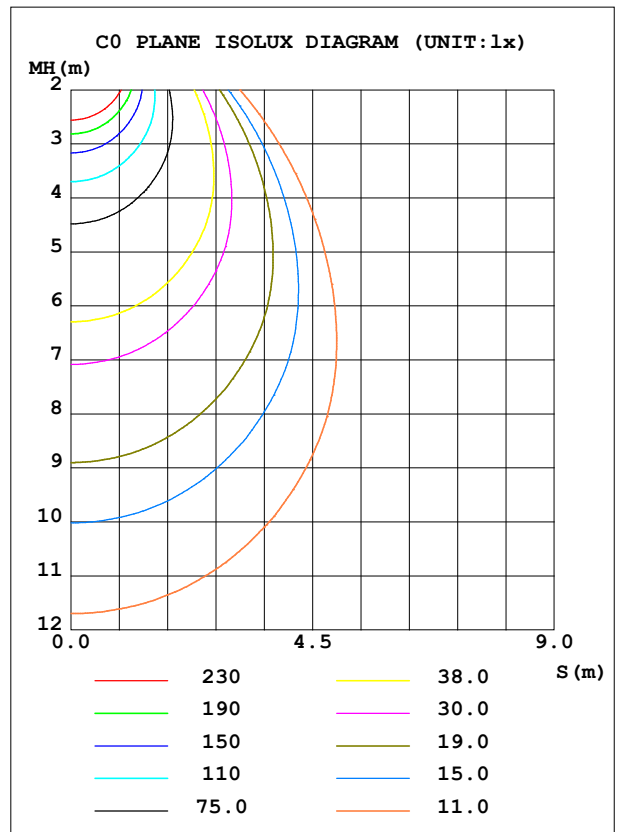
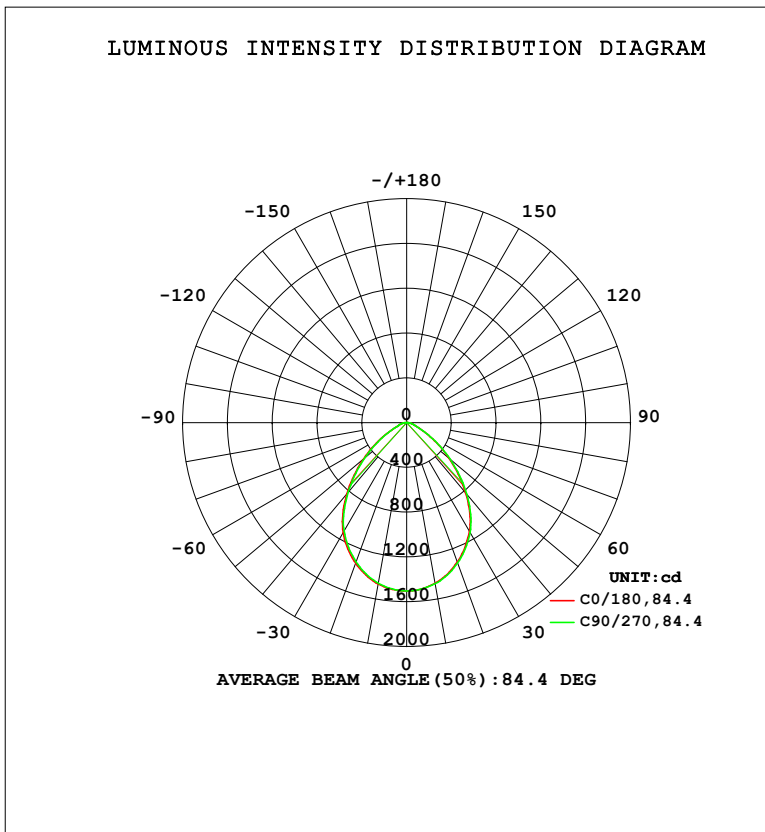


LUMINAIRE PHOTOMETRIC TEST REPORT

Test:U:119.56V I:0.2003A P:23.705W PF:0.9897 Freq:60.01Hz		
UTHDi:0.00% ITHDi:0.00% KDisp:0 Lamp Flux:2756.84x1 lm		
NAME: DL254-6-30W-M-A5C5-HO	TYPE: 26W	WEIGHT:
SPEC.: 3000K	DIM.: 0.21	SERIAL No.: 1
MFR.: Lotus LED Lights	SUR.: 0.15	Shielding Angle:

DATA OF LAMP		PHOTOMETRIC DATA			
MODEL	DL254-6-30W-M-A5C5-HO	Imax (cd)	1506	S/MH (C0/180)	1.14
NOMINAL POWER (W)	26	LOR (%)	100.0	S/MH (C90/270)	1.14
RATED VOLTAGE (V)	120	TOTAL FLUX (lm)	2756.8	<input type="checkbox"/> UP, DN (C0-180)	0.0,49.7
NOMINAL FLUX (lm)	2756.84	CIE CLASS	DIRECT	<input type="checkbox"/> UP, DN (C180-360)	0.0,50.3
LAMPS INSIDE	1	<input type="checkbox"/> up (%)	0.0	CIBSE SHR NOM	1.00
TEST VOLTAGE (V)	120	<input type="checkbox"/> down (%)	100.0	CIBSE SHR MAX	1.15



C Range: 0 - 360DEG
 C Interval: 22.5DEG
 Test Speed: HIGH
 Temperature: 25.3°C
 Operators: DAMIN
 Test Date: 2023-06-29

Range: 0 - 90DEG
 Interval: 1.0DEG
 Test System: EVERFINE GO-2000A_V1 SYSTEM V2.00.461
 Humidity: 65.0%
 Test Distance: 9.680m [K=1.0000]
 Remarks:

ZONAL FLUX DIAGRAM

ZONAL FLUX DIAGRAM:

°	C0	C45	C90	C135	C180	C225	C270	C315	°	□ zone	□ total	%lum,lamp
10	1464	1459	1457	1456	1457	1461	1461	1460	0- 10	141.4	141.4	5.13,5.13
20	1336	1329	1325	1325	1326	1330	1334	1333	10- 20	395.2	536.6	19.5,19.5
30	1135	1125	1120	1121	1123	1131	1134	1134	20- 30	568.2	1105	40.1,40.1
40	832.8	820.2	814.7	817.5	820.9	834.7	838.0	837.4	30- 40	614.8	1720	62.4,62.4
50	502.4	490.3	484.9	483.6	494.6	508.1	509.1	503.9	40- 50	507.3	2227	80.8,80.8
60	225.3	222.6	216.1	218.2	226.9	233.9	232.4	225.7	50- 60	315.4	2542	92.2,92.2
70	78.55	78.07	78.54	79.48	80.54	81.30	80.84	79.75	60- 70	136.6	2679	97.2,97.2
80	35.29	36.34	36.45	37.30	37.67	37.94	36.64	36.75	70- 80	61.58	2740	99.4,99.4
90	0.7080	0.7342	0.6817	0.7014	1.245	1.186	1.200	1.186	80- 90	16.37	2757	100,100
100									90-100			
110									100-110			
120									110-120			
130									120-130			
140									130-140			
150									140-150			
160									150-160			
170									160-170			
180									170-180			
DEG	LUMINOUS INTENSITY:cd									UNIT:lm		

Conical surface Flux(90deg): 1994.2 lm

%lum = 72.3%

%lamp = 72.3%

Conical surface Flux(130deg): 2627.4 lm

%lum = 95.3%

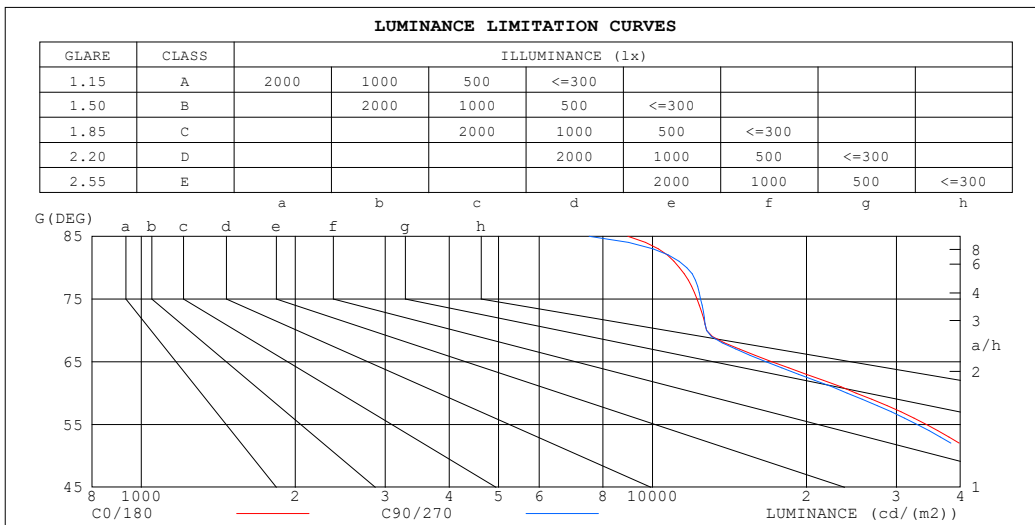
%lamp = 95.3%

C Range: 0 - 360DEG
 C Interval: 22.5DEG
 Test Speed: HIGH
 Temperature:25.3°C
 Operators:DAMIN
 Test Date:2023-06-29

□ Range: 0 - 90DEG
 □ Interval: 1.0DEG
 Test System:EVERFINE GO-2000A_V1 SYSTEM V2.00.461
 Humidity:65.0%
 Test Distance:9.680m [K=1.0000]
 Remarks:

LUMINANCE LIMITATION CURVES

Test:U:119.56V I:0.2003A P:23.705W PF:0.9897 Freq:60.01Hz UTHDi:0.00% ITHDi:0.00% KDisp:0 Lamp Flux:2756.84x1 lm		
NAME: DL254-6-30W-M-A5C5-HO	TYPE: 26W	WEIGHT:
SPEC.: 3000K	DIM.: 0.21	SERIAL No.: 1
MFR.: Lotus LED Lights	SUR.: 0.15	Shielding Angle:



LUMINANCE cd/(m2)		
G (DEG)	C0/180	C90/270
85	8949	7511
80	11289	11661
75	12222	12414
70	12759	12758
65	17122	16672
60	25029	24011
55	34341	32946
50	43423	41907
45	52235	50720

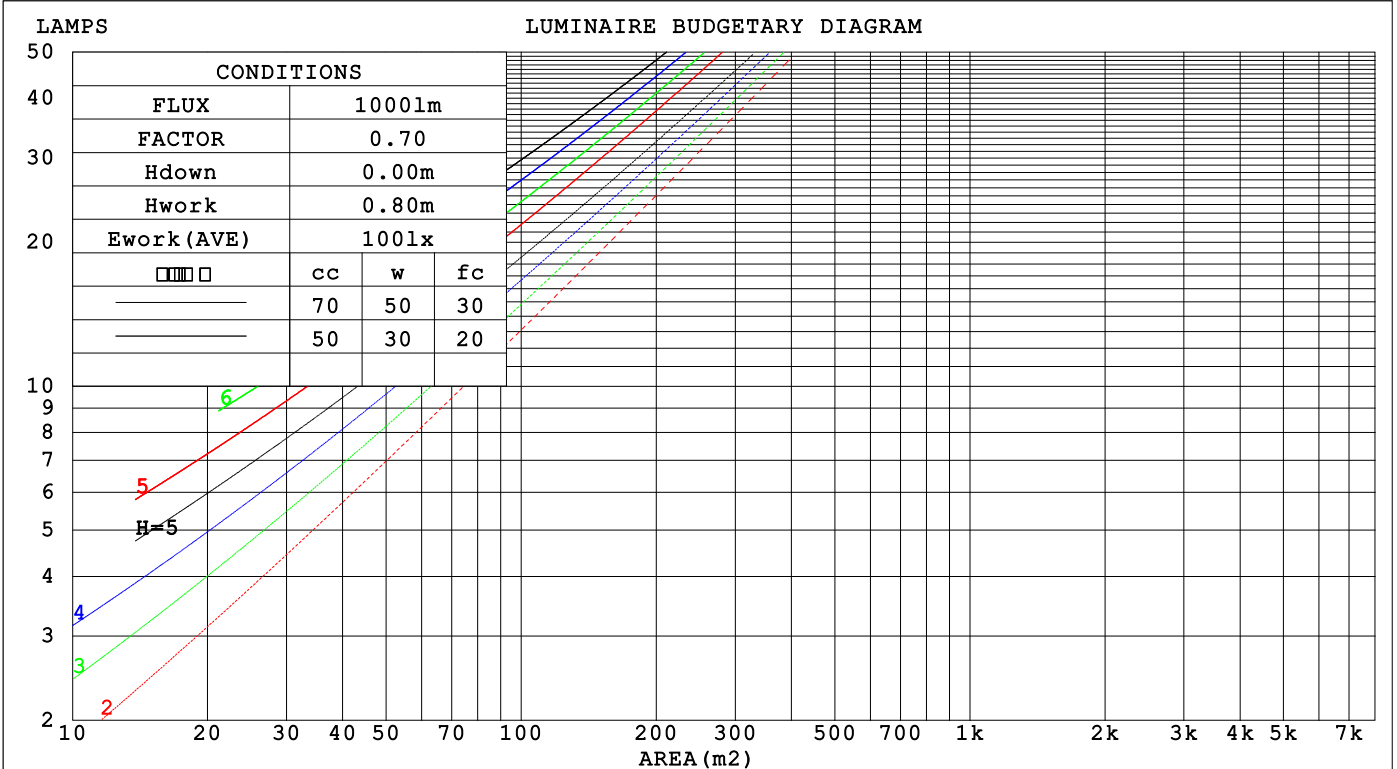
C Range: 0 - 360DEG
 C Interval: 22.5DEG
 Test Speed: HIGH
 Temperature:25.3°C
 Operators:DAMIN
 Test Date:2023-06-29

Range: 0 - 90DEG
 Interval: 1.0DEG
 Test System:EVERFINE GO-2000A_V1 SYSTEM V2.00.461
 Humidity:65.0%
 Test Distance:9.680m [K=1.0000]
 Remarks:

CU AND LUMINAIRE BUDGETARY ESTIMATE DIAGRAM

Test:U:119.56V I:0.2003A P:23.705W PF:0.9897 Freq:60.01Hz		
UTHdi:0.00% ITHdi:0.00% KDisp:0 Lamp Flux:2756.84x1 lm		
NAME: DL254-6-30W-M-A5C5-HO	TYPE: 26W	WEIGHT:
SPEC.: 3000K	DIM.: 0.21	SERIAL No.: 1
MFR.: Lotus LED Lights	SUR.: 0.15	Shielding Angle:

□cc	80%			70%			50%			30%			10%			0
□w	50%	30%	10%	50%	30%	10%	50%	30%	10%	50%	30%	10%	50%	30%	10%	0
□fc	20%			20%			20%			20%			20%			0
RCR	RCR:Room Cavity Ratio						Coefficients of Utilization(CU)									
0.0	1.19	1.19	1.19	1.16	1.16	1.16	1.11	1.11	1.11	1.06	1.06	1.06	1.02	1.02	1.02	1.00
1.0	1.07	1.04	1.01	1.05	1.02	.99	1.01	.99	.96	.97	.95	.93	.94	.92	.91	.89
2.0	.96	.91	.86	.95	.90	.85	.91	.87	.83	.88	.85	.82	.85	.82	.80	.78
3.0	.87	.80	.75	.85	.79	.74	.83	.77	.73	.80	.75	.72	.77	.74	.70	.69
4.0	.79	.71	.65	.77	.70	.65	.75	.69	.64	.73	.68	.63	.71	.66	.63	.61
5.0	.71	.64	.58	.70	.63	.58	.68	.62	.57	.66	.61	.56	.65	.60	.56	.54
6.0	.65	.57	.52	.64	.57	.51	.63	.56	.51	.61	.55	.51	.59	.54	.50	.48
7.0	.60	.52	.47	.59	.52	.46	.58	.51	.46	.56	.50	.46	.55	.50	.45	.44
8.0	.55	.47	.42	.54	.47	.42	.53	.47	.42	.52	.46	.42	.51	.45	.41	.40
9.0	.51	.43	.38	.50	.43	.38	.49	.43	.38	.48	.42	.38	.47	.42	.38	.36
10.0	.47	.40	.35	.47	.40	.35	.46	.39	.35	.45	.39	.35	.44	.39	.35	.33



C Range: 0 - 360DEG
 C Interval: 22.5DEG
 Test Speed: HIGH
 Temperature:25.3°C
 Operators:DAMIN
 Test Date:2023-06-29

□ Range: 0 - 90DEG
 □ Interval: 1.0DEG
 Test System:EVERFINE GO-2000A_V1 SYSTEM V2.00.461
 Humidity:65.0%
 Test Distance:9.680m [K=1.0000]
 Remarks:

WEC AND CCEC

Test:U:119.56V I:0.2003A P:23.705W PF:0.9897 Freq:60.01Hz		
UTHDi:0.00% ITHDi:0.00% KDisp:0 Lamp Flux:2756.84x1 lm		
NAME: DL254-6-30W-M-A5C5-HO	TYPE: 26W	WEIGHT:
SPEC.: 3000K	DIM.: 0.21	SERIAL No.: 1
MFR.: Lotus LED Lights	SUR.: 0.15	Shielding Angle:

<input type="checkbox"/> cc	80%			70%			50%			30%			10%			0
<input type="checkbox"/> w	50%	30%	10%	50%	30%	10%	50%	30%	10%	50%	30%	10%	50%	30%	10%	0
<input type="checkbox"/> fc	20%			20%			20%			20%			20%			0
RCR	RCR:Room Cavity Ratio						Wall Exitance Coefficients(WEC)									
0.0																
1.0	.242	.138	.044	.236	.134	.043	.223	.128	.041	.211	.122	.039	.200	.116	.037	
2.0	.234	.128	.039	.228	.126	.039	.217	.121	.037	.207	.116	.036	.197	.112	.035	
3.0	.222	.118	.035	.217	.116	.035	.207	.112	.034	.198	.108	.033	.190	.105	.032	
4.0	.209	.109	.032	.205	.107	.032	.196	.104	.031	.188	.101	.030	.181	.098	.030	
5.0	.197	.100	.029	.193	.099	.029	.185	.097	.028	.178	.094	.028	.172	.092	.028	
6.0	.186	.093	.027	.182	.092	.026	.175	.090	.026	.169	.088	.026	.163	.086	.026	
7.0	.175	.087	.025	.172	.086	.024	.166	.084	.024	.160	.082	.024	.155	.081	.024	
8.0	.166	.081	.023	.163	.080	.023	.157	.079	.022	.152	.077	.022	.147	.076	.022	
9.0	.157	.076	.021	.154	.075	.021	.149	.074	.021	.145	.073	.021	.140	.071	.021	
10.0	.149	.071	.020	.146	.071	.020	.142	.070	.020	.138	.068	.019	.134	.067	.019	

<input type="checkbox"/> cc	80%			70%			50%			30%			10%			0
<input type="checkbox"/> w	50%	30%	10%	50%	30%	10%	50%	30%	10%	50%	30%	10%	50%	30%	10%	0
<input type="checkbox"/> fc	20%			20%			20%			20%			20%			0
RCR	RCR:Room Cavity Ratio						Ceiling Cavity Exitance Coefficients(CCEC)									
0.0																
1.0	.190	.190	.190	.163	.163	.163	.111	.111	.111	.064	.064	.064	.020	.020	.020	
2.0	.176	.157	.140	.150	.135	.120	.103	.093	.083	.059	.054	.048	.019	.017	.016	
3.0	.165	.132	.105	.141	.114	.091	.097	.079	.063	.056	.046	.037	.018	.015	.012	
4.0	.155	.114	.081	.133	.098	.070	.091	.068	.049	.053	.040	.029	.017	.013	.010	
5.0	.147	.100	.064	.126	.086	.056	.087	.060	.039	.050	.035	.023	.016	.011	.008	
6.0	.140	.089	.052	.120	.077	.045	.083	.054	.032	.048	.032	.019	.015	.010	.006	
7.0	.133	.081	.043	.114	.070	.038	.079	.049	.027	.046	.029	.016	.015	.009	.005	
8.0	.126	.074	.036	.109	.064	.032	.075	.045	.022	.044	.026	.013	.014	.009	.004	
9.0	.121	.068	.031	.104	.059	.027	.072	.041	.019	.042	.024	.012	.014	.008	.004	
10.0	.115	.063	.027	.099	.054	.024	.069	.038	.017	.040	.023	.010	.013	.007	.003	
10.0	.110	.058	.024	.095	.051	.021	.066	.036	.015	.038	.021	.009	.012	.007	.003	

C Range: 0 - 360DEG
 C Interval: 22.5DEG
 Test Speed: HIGH
 Temperature:25.3°C
 Operators:DAMIN
 Test Date:2023-06-29

Range: 0 - 90DEG
 Interval: 1.0DEG
 Test System:EVERFINE GO-2000A_V1 SYSTEM V2.00.461
 Humidity:65.0%
 Test Distance:9.680m [K=1.0000]
 Remarks:

UGR(Unified Glare Rating) Table

Test:U:119.56V I:0.2003A P:23.705W PF:0.9897 Freq:60.01Hz UTHDi:0.00% ITHDi:0.00% KDisp:0 Lamp Flux:2756.84x1 lm		
NAME: DL254-6-30W-M-A5C5-HO	TYPE: 26W	WEIGHT:
SPEC.: 3000K	DIM.: 0.21	SERIAL No.: 1
MFR.: Lotus LED Lights	SUR.: 0.15	Shielding Angle:

ceiling/cavity	0.7	0.7	0.5	0.5	0.3	0.7	0.7	0.5	0.5	0.3
walls	0.5	0.3	0.5	0.3	0.3	0.5	0.3	0.5	0.3	0.3
working plane	0.2	0.2	0.2	0.2	0.2	0.2	0.2	0.2	0.2	0.2

Room dimensions	Viewed crosswise					Viewed endwise				
x = 2H y = 2H	24.3	25.6	24.6	25.8	26.0	24.2	25.5	24.4	25.7	25.9
3H	24.5	25.7	24.8	25.9	26.2	24.4	25.6	24.7	25.8	26.0
4H	24.6	25.7	24.9	26.0	26.2	24.5	25.6	24.8	25.9	26.1
6H	24.7	25.7	25.0	26.0	26.3	24.6	25.6	24.9	25.9	26.2
8H	24.7	25.7	25.0	26.0	26.3	24.6	25.6	24.9	25.9	26.2
12H	24.7	25.7	25.0	26.0	26.3	24.6	25.6	24.9	25.9	26.1
4H 2H	24.4	25.5	24.7	25.8	26.0	24.3	25.4	24.6	25.6	25.9
3H	24.7	25.7	25.0	26.0	26.3	24.6	25.6	24.9	25.9	26.1
4H	24.9	25.8	25.2	26.1	26.4	24.8	25.7	25.1	26.0	26.3
6H	25.1	25.8	25.4	26.2	26.5	25.0	25.7	25.4	26.1	26.4
8H	25.1	25.8	25.5	26.2	26.6	25.0	25.8	25.4	26.1	26.5
12H	25.1	25.8	25.6	26.2	26.6	25.1	25.7	25.5	26.1	26.5
8H 4H	24.9	25.6	25.3	26.0	26.4	24.8	25.5	25.2	25.9	26.3
6H	25.2	25.7	25.6	26.1	26.6	25.1	25.7	25.5	26.1	26.5
8H	25.3	25.8	25.7	26.2	26.7	25.2	25.7	25.7	26.1	26.6
12H	25.3	25.8	25.8	26.2	26.7	25.3	25.7	25.7	26.1	26.6
12H 4H	24.9	25.5	25.3	25.9	26.3	24.8	25.4	25.2	25.8	26.2
6H	25.2	25.7	25.6	26.1	26.6	25.1	25.6	25.5	26.0	26.5
8H	25.3	25.7	25.8	26.2	26.7	25.2	25.7	25.7	26.1	26.6

Variations with the observer position at spacings(CIE Pub.117):		
S = 1.0H	+ 0.7 / - 1.0	+ 0.8 / - 1.0
1.5H	+ 0.4 / - 0.4	+ 0.4 / - 0.4
2.0H	+ 1.7 / - 1.9	+ 1.6 / - 1.8

CIE Pub.117, 2757 lm Total Lamp Luminous Flux Corrected (8log(F/F0) = 3.5)
 Area: 0.018 m2

C Range: 0 - 360DEG	<input type="checkbox"/> Range: 0 - 90DEG
C Interval: 22.5DEG	<input type="checkbox"/> Interval: 1.0DEG
Test Speed: HIGH	Test System:EVERFINE GO-2000A_V1 SYSTEM V2.00.461
Temperature:25.3°C	Humidity:65.0%
Operators:DAMIN	Test Distance:9.680m [K=1.0000]
Test Date:2023-06-29	Remarks:

UTILIZATION FACTORS TABLE

Test:U:119.56V I:0.2003A P:23.705W PF:0.9897 Freq:60.01Hz UTHDi:0.00% ITHDi:0.00% KDisp:0 Lamp Flux:2756.84x1 lm		
NAME: DL254-6-30W-M-A5C5-HO	TYPE: 26W	WEIGHT:
SPEC.: 3000K	DIM.: 0.21	SERIAL No.: 1
MFR.: Lotus LED Lights	SUR.: 0.15	Shielding Angle:

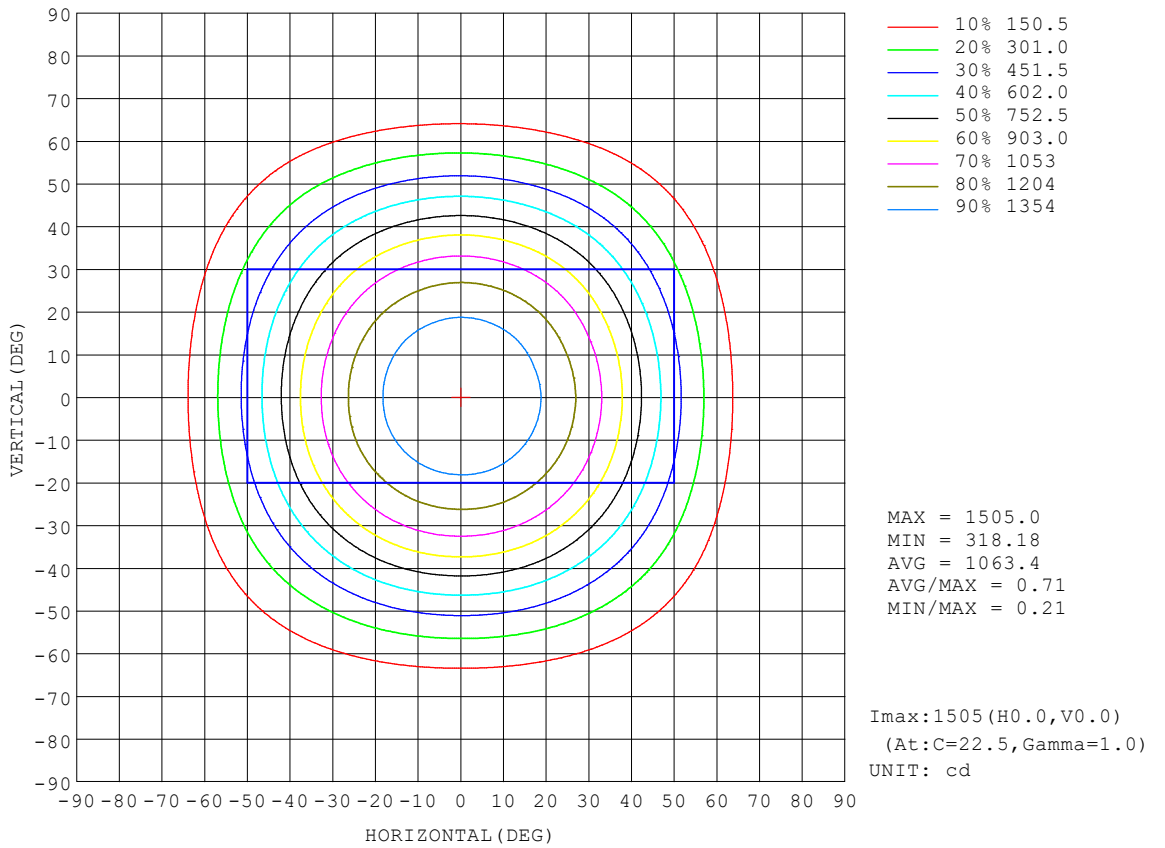
REFLECTANCE										
Ceiling	0.8	0.8	0.8	0.7	0.7	0.7	0.5	0.5	0.5	0
Walls	0.7	0.5	0.3	0.7	0.5	0.3	0.7	0.5	0.3	0
Working plane	0.2	0.2	0.2	0.2	0.2	0.2	0.2	0.2	0.2	0
ROOM INDEX	UTILIZATION FACTORS (PERCENT) $k(RI) \times RCR = 5$									
k = 0.60	68	58	52	67	58	52	66	57	52	46
0.80	78	68	62	77	68	62	75	67	62	56
1.00	85	77	71	84	76	71	82	77	70	64
1.25	92	84	78	91	83	78	88	82	77	71
1.50	96	88	83	95	88	83	92	86	81	75
2.00	101	95	90	100	94	89	97	92	88	81
2.50	104	98	94	102	97	93	99	94	91	84
3.00	107	102	97	105	100	96	101	97	94	87
4.00	110	105	102	107	104	100	104	100	98	90
5.00	111	108	105	109	106	103	105	102	100	92
ROOM INDEX	UF(total)									Direct
According to DIN EN 13032-2 2004			Suspended				SHRNOM = 1.25			

C Range: 0 - 360DEG
 C Interval: 22.5DEG
 Test Speed: HIGH
 Temperature:25.3°C
 Operators:DAMIN
 Test Date:2023-06-29

Range: 0 - 90DEG
 Interval: 1.0DEG
 Test System:EVERFINE GO-2000A_V1 SYSTEM V2.00.461
 Humidity:65.0%
 Test Distance:9.680m [K=1.0000]
 Remarks:

ISOCANDELA DIAGRAM

Test:U:119.56V I:0.2003A P:23.705W PF:0.9897 Freq:60.01Hz UTHDi:0.00% ITHDi:0.00% KDisp:0 Lamp Flux:2756.84x1 lm		
NAME: DL254-6-30W-M-A5C5-HO	TYPE: 26W	WEIGHT:
SPEC.: 3000K	DIM.: 0.21	SERIAL No.: 1
MFR.: Lotus LED Lights	SUR.: 0.15	Shielding Angle:

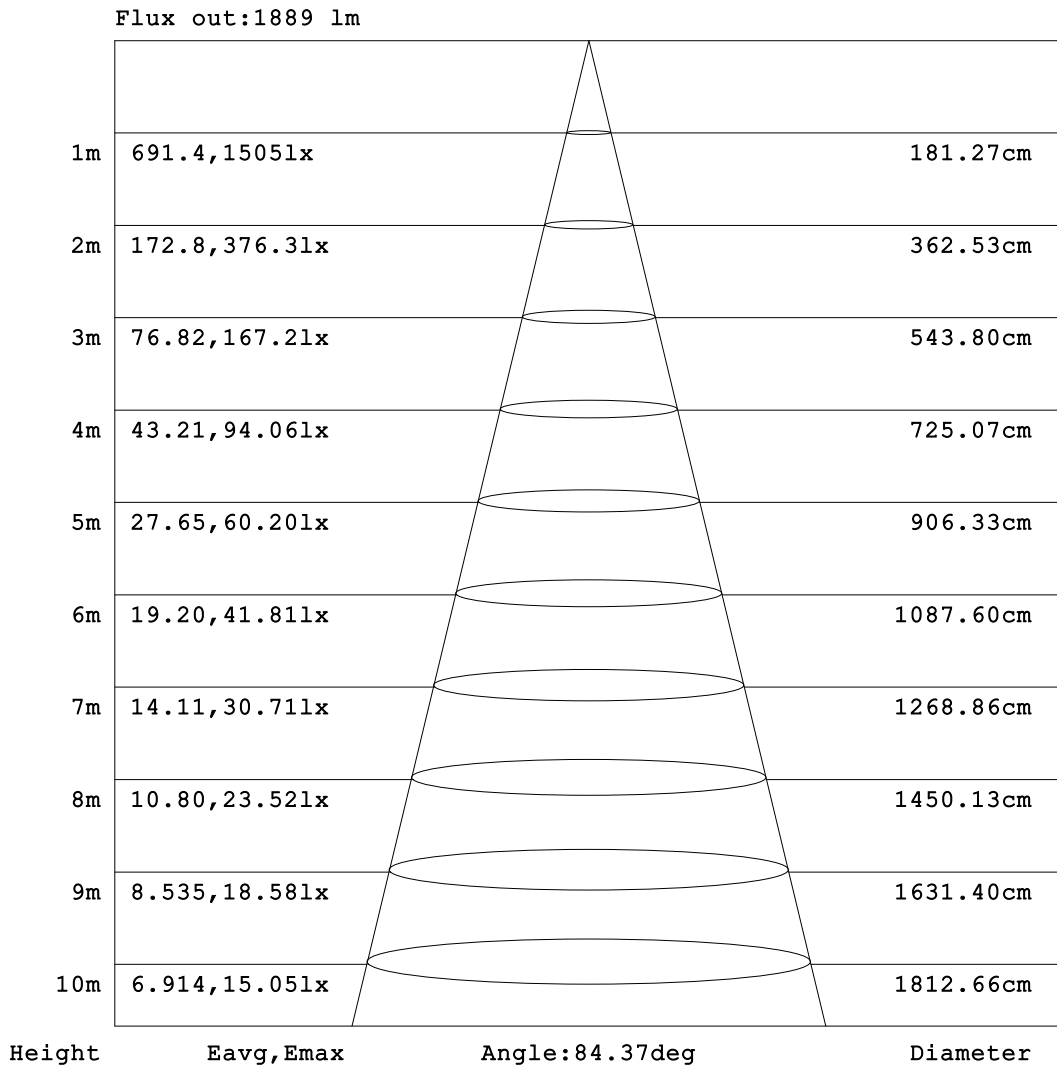


C Range: 0 - 360DEG
 C Interval: 22.5DEG
 Test Speed: HIGH
 Temperature:25.3°C
 Operators:DAMIN
 Test Date:2023-06-29

Range: 0 - 90DEG
 Interval: 1.0DEG
 Test System:EVERFINE GO-2000A_V1 SYSTEM V2.00.461
 Humidity:65.0%
 Test Distance:9.680m [K=1.0000]
 Remarks:

AAI Figure

Test:U:119.56V I:0.2003A P:23.705W PF:0.9897 Freq:60.01Hz UTHDi:0.00% ITHDi:0.00% KDisp:0 Lamp Flux:2756.84x1 lm		
NAME: DL254-6-30W-M-A5C5-HO	TYPE: 26W	WEIGHT:
SPEC.: 3000K	DIM.: 0.21	SERIAL No.: 1
MFR.: Lotus LED Lights	SUR.: 0.15	Shielding Angle:



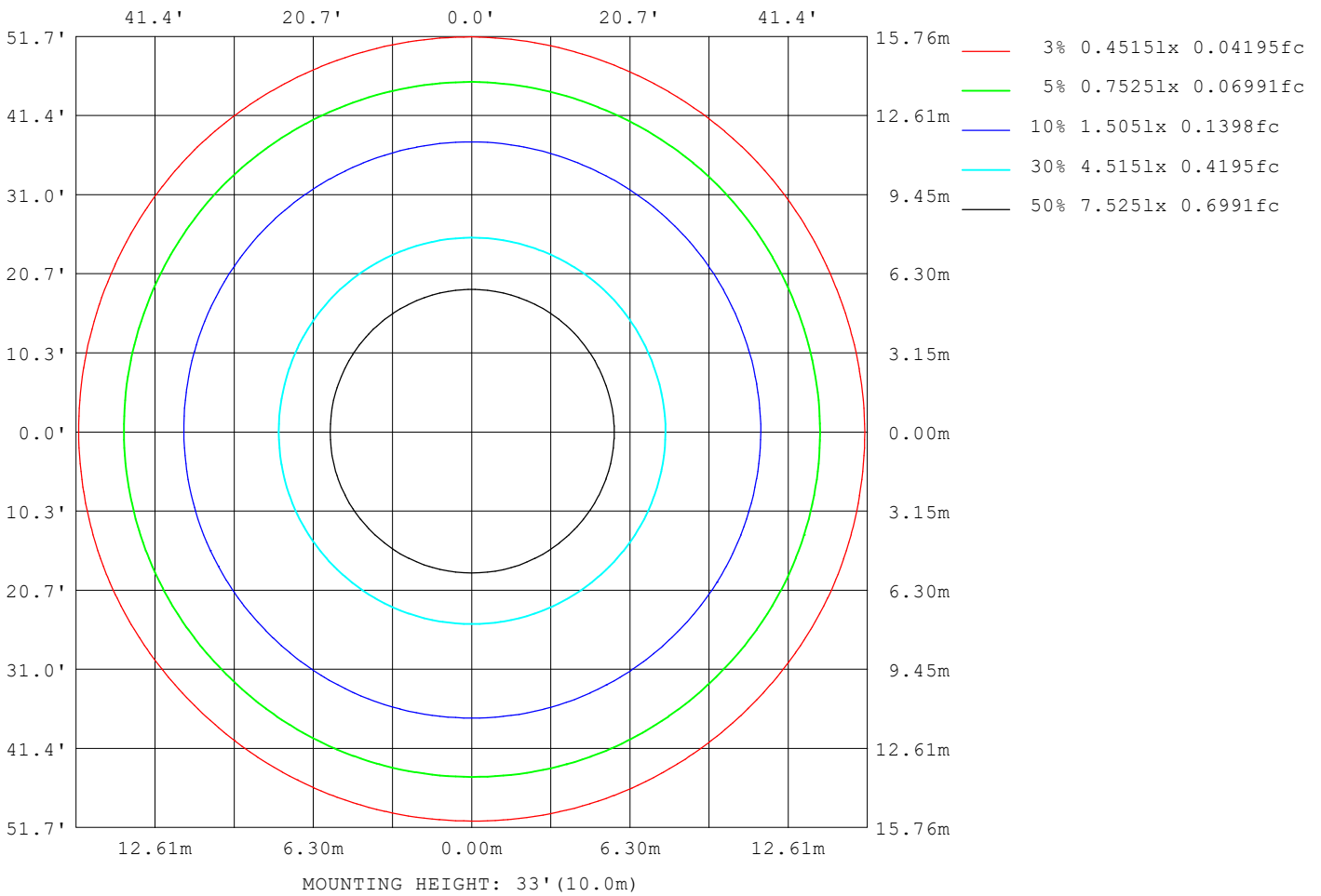
Note: The Curves indicate the illuminated area and the average illumination when the luminaire is at different distance.

C Range: 0 - 360DEG
 C Interval: 22.5DEG
 Test Speed: HIGH
 Temperature: 25.3°C
 Operators: DAMIN
 Test Date: 2023-06-29

Range: 0 - 90DEG
 Interval: 1.0DEG
 Test System: EVERFINE GO-2000A_V1 SYSTEM V2.00.461
 Humidity: 65.0%
 Test Distance: 9.680m [K=1.0000]
 Remarks:

ISOLUX DIAGRAM

Test:U:119.56V I:0.2003A P:23.705W PF:0.9897 Freq:60.01Hz UTHDi:0.00% ITHDi:0.00% KDisp:0 Lamp Flux:2756.84x1 lm		
NAME: DL254-6-30W-M-A5C5-HO	TYPE: 26W	WEIGHT:
SPEC.: 3000K	DIM.: 0.21	SERIAL No.: 1
MFR.: Lotus LED Lights	SUR.: 0.15	Shielding Angle:



C Range: 0 - 360DEG
 C Interval: 22.5DEG
 Test Speed: HIGH
 Temperature:25.3°C
 Operators:DAMIN
 Test Date:2023-06-29

Range: 0 - 90DEG
 Interval: 1.0DEG
 Test System:EVERFINE GO-2000A_V1 SYSTEM V2.00.461
 Humidity:65.0%
 Test Distance:9.680m [K=1.0000]
 Remarks:

LED Avg.L Report

Test:U:119.56V I:0.2003A P:23.705W PF:0.9897 Freq:60.01Hz UTHDi:0.00% ITHDi:0.00% KDisp:0 Lamp Flux:2756.84x1 lm		
NAME: DL254-6-30W-M-A5C5-HO	TYPE: 26W	WEIGHT:
SPEC.: 3000K	DIM.: 0.21	SERIAL No.: 1
MFR.: Lotus LED Lights	SUR.: 0.15	Shielding Angle:

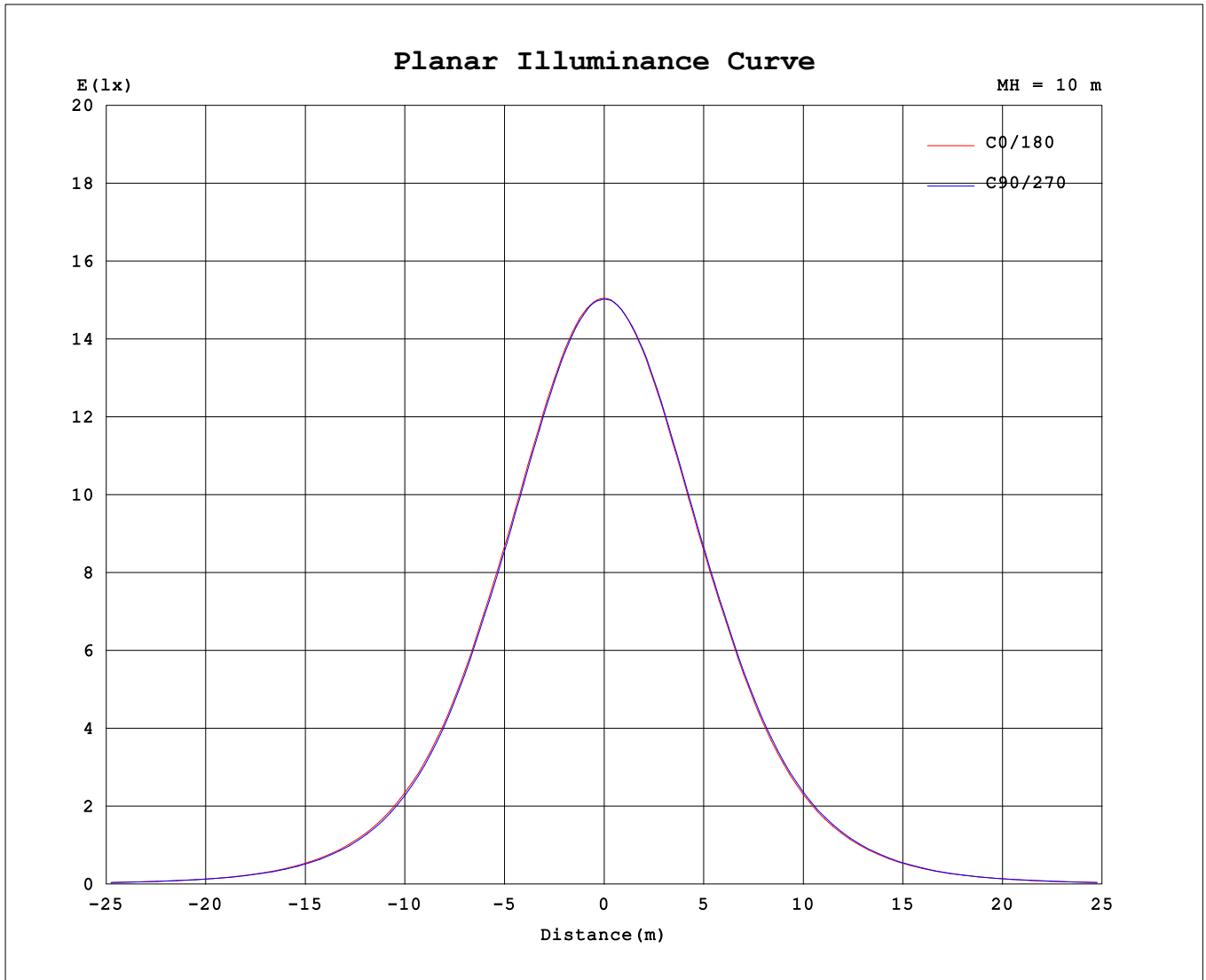
AvgL	cd/m2
L_0~180 (65) av	17307
L_0~180 (75) av	12462
L_0~180 (85) av	9732
L_90~270 (65) av	17256
L_90~270 (75) av	12569
L_90~270 (85) av	7490
L_45 (65) av	17345
L_45 (75) av	12581
L_45 (85) av	8692

Standard: GB/T 29293-2012

C Range: 0 - 360DEG
 C Interval: 22.5DEG
 Test Speed: HIGH
 Temperature:25.3°C
 Operators:DAMIN
 Test Date:2023-06-29

Range: 0 - 90DEG
 Interval: 1.0DEG
 Test System:EVERFINE GO-2000A_V1 SYSTEM V2.00.461
 Humidity:65.0%
 Test Distance:9.680m [K=1.0000]
 Remarks:

Planar Illuminance Curve



C Range: 0 - 360DEG
 C Interval: 22.5DEG
 Test Speed: HIGH
 Temperature: 25.3°C
 Operators: DAMIN
 Test Date: 2023-06-29

Range: 0 - 90DEG
 Interval: 1.0DEG
 Test System: EVERFINE GO-2000A_V1 SYSTEM V2.00.461
 Humidity: 65.0%
 Test Distance: 9.680m [K=1.0000]
 Remarks:

LUMINOUS DISTRIBUTION INTENSITY DATA

Table with 3 columns: NAME, TYPE, WEIGHT, SPEC., DIM., SERIAL No., MFR., SUR., Shielding Angle. Test details: U:119.56V I:0.2003A P:23.705W PF:0.9897 Freq:60.01Hz UTHDi:0.00% ITTHDi:0.00% KDisp:0 Lamp Flux:2756.84x1 lm

Table--1

UNIT: cd

Large grid table with columns for C (DEG) and I (DEG) values ranging from 0 to 90 degrees. The table contains numerical data representing luminous intensity at various angles.

C Range: 0 - 360DEG
C Interval: 22.5DEG
Test Speed: HIGH
Temperature:25.3C
Operators:DAMIN
Test Date:2023-06-29

I Range: 0 - 90DEG
I Interval: 1.0DEG
Test System:EVERFINE GO-2000A_V1 SYSTEM V2.00.461
Humidity:65.0%
Test Distance:9.680m [K=1.0000]
Remarks: