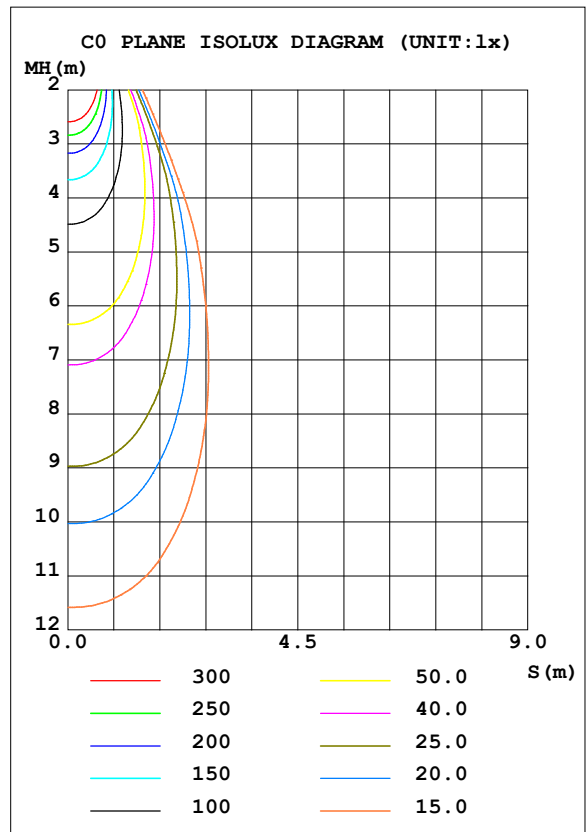
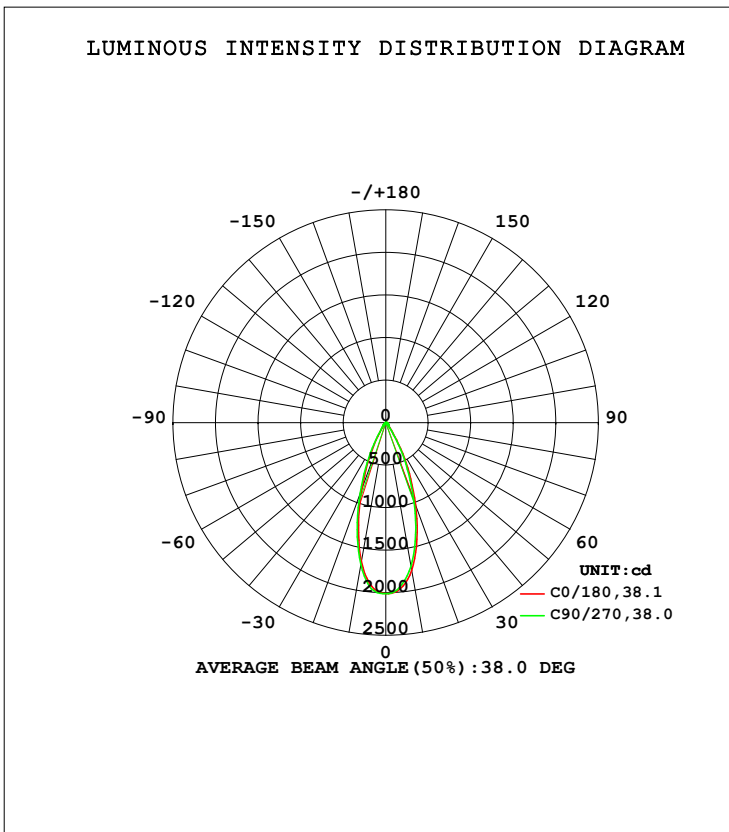


**LUMINAIRE PHOTOMETRIC TEST REPORT**

Test:U:119.97V I:0.1129A P:13.302W PF:0.9433 Freq:59.98Hz Lamp Flux:961.94x1 lm		
NAME: LED-2-S15W-5CCT-2RRWH-2RTWH	TYPE:	WEIGHT:
SPEC.:3500K 90	DIM.:	SERIAL No.:
MFR.:	SUR.:	Shielding Angle:

DATA OF LAMP		PHOTOMETRIC DATA Eff: 72.32 lm/W			
MODEL		I <sub>max</sub> (cd)	2011	S/MH (C0/180)	0.59
NOMINAL POWER (W)	15	LOR (%)	100.0	S/MH (C90/270)	0.61
RATED VOLTAGE (V)	120	TOTAL FLUX (lm)	961.94	<input type="checkbox"/> UP, DN (C0-180)	0.0, 51.9
NOMINAL FLUX (lm)	961.94	CIE CLASS	DIRECT	<input type="checkbox"/> UP, DN (C180-360)	0.0, 48.1
LAMPS INSIDE	1	<input type="checkbox"/> up (%)	0.0	CIBSE SHR NOM	0.50
TEST VOLTAGE (V)	120	<input type="checkbox"/> down (%)	100.0	CIBSE SHR MAX	0.65



C Range: 0 - 360DEG  
 C Interval: 22.5DEG  
 Test Speed: HIGH  
 Temperature: 25.3DEG  
 Operators:  
 Test Date: 2021-11-15

Range: 0 - 90DEG  
 Interval: 1.0DEG  
 Test System: EVERFINE GO-SPEX500\_V1 SYSTEM V2.00.421  
 Humidity: 65.0%  
 Test Distance: 3.080m [K=1.0000]  
 Remarks: PORTER

ZONAL FLUX DIAGRAM

ZONAL FLUX DIAGRAM:

mm	C0	C45	C90	C135	C180	C225	C270	C315	mm	□ zone	□ total	%lum, lamp
10	1761	1761	1713	1679	1660	1676	1690	1734	0- 10	178.1	178.1	18.5,18.5
20	1027	1034	962.7	902.1	823.1	860.3	883.6	969.6	10- 20	366.4	544.6	56.6,56.6
30	349.8	368.1	302.1	236.4	190.1	201.0	236.3	284.9	20- 30	259.6	804.1	83.6,83.6
40	68.76	71.15	64.73	58.03	56.18	57.70	60.76	64.74	30- 40	79.71	883.8	91.9,91.9
50	35.30	34.12	32.51	31.26	31.38	32.36	33.91	34.87	40- 50	34.70	918.5	95.5,95.5
60	18.13	17.37	16.74	16.79	17.48	18.20	18.73	18.68	50- 60	21.70	940.2	97.7,97.7
70	9.670	9.223	8.900	8.946	9.407	9.929	10.24	10.08	60- 70	13.21	953.5	99.1,99.1
80	4.081	3.834	3.426	3.606	3.825	3.969	3.736	4.105	70- 80	6.919	960.4	99.8,99.8
90	0.0370	0.0434	0.0381	0.0334	0.0457	0.0421	0.0451	0.0424	80- 90	1.566	961.9	100,100
100									90-100			
110									100-110			
120									110-120			
130									120-130			
140									130-140			
150									140-150			
160									150-160			
170									160-170			
180									170-180			
DEG	LUMINOUS INTENSITY:cd									UNIT:lm		

C Range: 0 - 360DEG  
 C Interval: 22.5DEG  
 Test Speed: HIGH  
 Temperature:25.3DEG  
 Operators:  
 Test Date:2021-11-15

□ Range: 0 - 90DEG  
 □ Interval: 1.0DEG  
 Test System:EVERFINE GO-SPEX500\_V1 SYSTEM V2.00.421  
 Humidity:65.0%  
 Test Distance:3.080m [K=1.0000]  
 Remarks: PORTER

**LUMINANCE LIMITATION CURVES**

Test:U:119.97V I:0.1129A P:13.302W PF:0.9433 Freq:59.98Hz Lamp Flux:961.94x1 lm		
NAME: LED-2-S15W-5CCT-2RRWH-2RTWH	TYPE:	WEIGHT:
SPEC.:3500K 90	DIM.:	SERIAL No.:
MFR.:	SUR.:	Shielding Angle:



LUMINANCE cd/(m2)		
G (DEG)	C0/180	C90/270
85	84	81
80	212	177
75	230	210
70	255	234
65	285	263
60	327	301
55	390	357
50	495	455
45	586	543

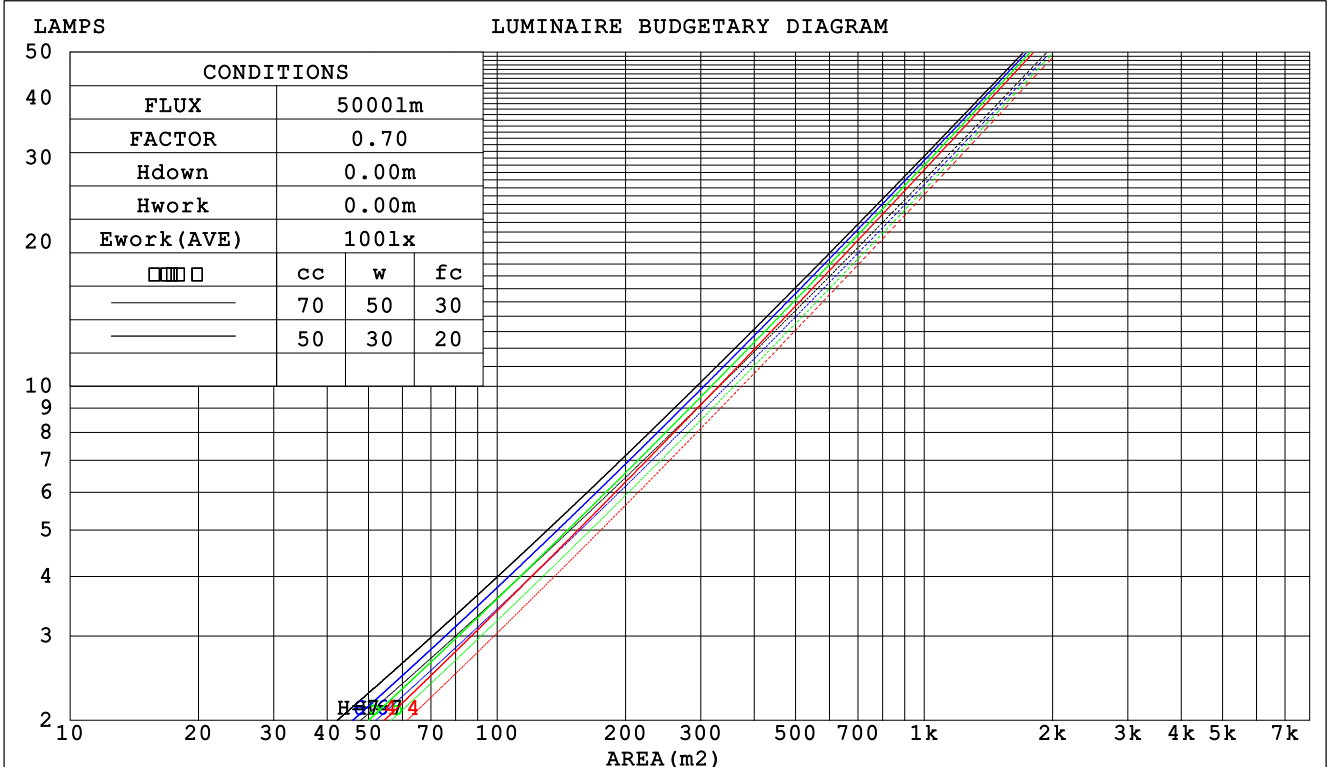
C Range: 0 - 360DEG  
 C Interval: 22.5DEG  
 Test Speed: HIGH  
 Temperature:25.3DEG  
 Operators:  
 Test Date:2021-11-15

Range: 0 - 90DEG  
 Interval: 1.0DEG  
 Test System:EVERFINE GO-SPEX500\_V1 SYSTEM V2.00.421  
 Humidity:65.0%  
 Test Distance:3.080m [K=1.0000]  
 Remarks: PORTER

**CU AND LUMINAIRE BUDGETARY ESTIMATE DIAGRAM**

Test:U:119.97V I:0.1129A P:13.302W PF:0.9433 Freq:59.98Hz Lamp Flux:961.94x1 lm		
NAME: LED-2-S15W-5CCT-2RRWH-2RTWH	TYPE:	WEIGHT:
SPEC.:3500K 90	DIM.:	SERIAL No.:
MFR.:	SUR.:	Shielding Angle:

□cc	80%			70%			50%			30%			10%			0
□w	50%	30%	10%	50%	30%	10%	50%	30%	10%	50%	30%	10%	50%	30%	10%	0
□fc	20%			20%			20%			20%			20%			0
RCR	RCR:Room Cavity Ratio						Coefficients of Utilization(CU)									
0.0	1.19	1.19	1.19	1.16	1.16	1.16	1.11	1.11	1.11	1.06	1.06	1.06	1.02	1.02	1.02	1.00
1.0	1.11	1.09	1.07	1.09	1.07	1.05	1.05	1.03	1.02	1.01	.00	.99	.98	.97	.96	.94
2.0	1.04	1.00	.97	1.02	.99	.96	.99	.96	.94	.96	.94	.92	.94	.92	.90	.89
3.0	.98	.93	.90	.97	.92	.89	.94	.91	.88	.92	.89	.86	.90	.87	.85	.84
4.0	.93	.88	.84	.91	.87	.83	.89	.85	.82	.87	.84	.81	.86	.83	.80	.79
5.0	.88	.83	.79	.87	.82	.78	.85	.81	.78	.84	.80	.77	.82	.79	.76	.75
6.0	.83	.78	.74	.83	.78	.74	.81	.77	.73	.80	.76	.73	.79	.75	.73	.71
7.0	.79	.74	.70	.79	.74	.70	.78	.73	.70	.76	.72	.69	.75	.72	.69	.68
8.0	.76	.71	.67	.75	.70	.67	.74	.70	.67	.73	.69	.66	.72	.69	.66	.65
9.0	.73	.67	.64	.72	.67	.64	.71	.67	.64	.70	.66	.63	.70	.66	.63	.62
10.0	.70	.64	.61	.69	.64	.61	.68	.64	.61	.68	.64	.61	.67	.63	.61	.59



C Range: 0 - 360DEG  
 C Interval: 22.5DEG  
 Test Speed: HIGH  
 Temperature:25.3DEG  
 Operators:  
 Test Date:2021-11-15

□ Range: 0 - 90DEG  
 □ Interval: 1.0DEG  
 Test System:EVERFINE GO-SPEX500\_V1 SYSTEM V2.00.421  
 Humidity:65.0%  
 Test Distance:3.080m [K=1.0000]  
 Remarks: PORTER

WEC AND CCEC

Test:U:119.97V I:0.1129A P:13.302W PF:0.9433 Freq:59.98Hz Lamp Flux:961.94x1 lm		
NAME: LED-2-S15W-5CCT-2RRWH-2RTWH	TYPE:	WEIGHT:
SPEC.:3500K 90	DIM.:	SERIAL No.:
MFR.:	SUR.:	Shielding Angle:

<input type="checkbox"/> cc	80%			70%			50%			30%			10%			0
<input type="checkbox"/> w	50%	30%	10%	50%	30%	10%	50%	30%	10%	50%	30%	10%	50%	30%	10%	0
<input type="checkbox"/> fc	20%			20%			20%			20%			20%			0
RCR	RCR:Room Cavity Ratio						Wall Exitance Coefficients (WEC)									
0.0																
1.0	.169	.096	.031	.163	.093	.029	.150	.086	.028	.139	.080	.026	.128	.074	.024	
2.0	.160	.088	.027	.154	.085	.026	.144	.080	.025	.134	.075	.024	.125	.071	.022	
3.0	.150	.080	.024	.146	.078	.023	.137	.074	.023	.128	.070	.022	.121	.067	.021	
4.0	.142	.074	.022	.138	.072	.021	.130	.069	.021	.123	.066	.020	.116	.063	.019	
5.0	.134	.068	.020	.130	.067	.019	.124	.064	.019	.118	.062	.018	.112	.060	.018	
6.0	.127	.064	.018	.124	.063	.018	.118	.061	.018	.113	.059	.017	.108	.057	.017	
7.0	.121	.060	.017	.118	.059	.017	.113	.057	.016	.108	.055	.016	.104	.054	.016	
8.0	.115	.056	.016	.113	.055	.016	.108	.054	.015	.104	.053	.015	.100	.051	.015	
9.0	.110	.053	.015	.108	.053	.015	.104	.051	.015	.100	.050	.014	.096	.049	.014	
10.0	.105	.050	.014	.103	.050	.014	.100	.049	.014	.096	.048	.014	.093	.047	.013	

<input type="checkbox"/> cc	80%			70%			50%			30%			10%			0
<input type="checkbox"/> w	50%	30%	10%	50%	30%	10%	50%	30%	10%	50%	30%	10%	50%	30%	10%	0
<input type="checkbox"/> fc	20%			20%			20%			20%			20%			0
RCR	RCR:Room Cavity Ratio						Ceiling Cavity Exitance Coefficients (CCEC)									
0.0	.190	.190	.190	.163	.163	.163	.111	.111	.111	.064	.064	.064	.020	.020	.020	
1.0	.171	.157	.145	.146	.135	.125	.100	.093	.087	.057	.054	.050	.018	.017	.016	
2.0	.155	.133	.114	.132	.114	.099	.091	.079	.069	.052	.046	.040	.017	.015	.013	
3.0	.141	.113	.091	.121	.098	.079	.083	.068	.055	.048	.040	.033	.015	.013	.011	
4.0	.130	.099	.074	.112	.085	.065	.077	.059	.045	.044	.035	.027	.014	.011	.009	
5.0	.121	.087	.062	.104	.075	.054	.072	.052	.038	.041	.031	.022	.013	.010	.007	
6.0	.113	.077	.052	.097	.067	.045	.067	.047	.032	.039	.028	.019	.013	.009	.006	
7.0	.106	.069	.044	.091	.060	.038	.063	.042	.027	.037	.025	.016	.012	.008	.005	
8.0	.100	.063	.038	.086	.055	.033	.059	.038	.023	.035	.023	.014	.011	.007	.005	
9.0	.094	.058	.033	.081	.050	.029	.056	.035	.020	.033	.021	.012	.011	.007	.004	
10.0	.090	.053	.029	.077	.046	.025	.054	.032	.018	.031	.019	.011	.010	.006	.004	

C Range: 0 - 360DEG  
 C Interval: 22.5DEG  
 Test Speed: HIGH  
 Temperature:25.3DEG  
 Operators:  
 Test Date:2021-11-15

Range: 0 - 90DEG  
 Interval: 1.0DEG  
 Test System:EVERFINE GO-SPEX500\_V1 SYSTEM V2.00.421  
 Humidity:65.0%  
 Test Distance:3.080m [K=1.0000]  
 Remarks: PORTER

**UGR(Unified Glare Rating) Table**

Test:U:119.97V I:0.1129A P:13.302W PF:0.9433 Freq:59.98Hz Lamp Flux:961.94x1 lm		
NAME: LED-2-S15W-5CCT-2RRWH-2RTWH	TYPE:	WEIGHT:
SPEC.:3500K 90	DIM.:	SERIAL No.:
MFR.:	SUR.:	Shielding Angle:

ceiling/cavity	0.7	0.7	0.5	0.5	0.3	0.7	0.7	0.5	0.5	0.3
walls	0.5	0.3	0.5	0.3	0.3	0.5	0.3	0.5	0.3	0.3
working plane	0.2	0.2	0.2	0.2	0.2	0.2	0.2	0.2	0.2	0.2
Room dimensions	Viewed crosswise					Viewed endwise				
x = 2H y = 2H	5.3	6.2	5.5	6.3	6.5	4.9	5.8	5.2	6.0	6.1
3H	5.7	6.5	6.0	6.7	6.9	5.4	6.2	5.6	6.4	6.6
4H	5.9	6.7	6.2	6.9	7.1	5.6	6.3	5.8	6.5	6.7
6H	6.1	6.8	6.4	7.0	7.3	5.7	6.4	6.0	6.6	6.9
8H	6.1	6.8	6.4	7.1	7.3	5.7	6.4	6.0	6.6	6.9
12H	6.1	6.8	6.4	7.0	7.3	5.7	6.3	6.0	6.6	6.9
4H 2H	5.4	6.1	5.7	6.4	6.6	5.1	5.8	5.3	6.0	6.3
3H	6.0	6.6	6.3	6.9	7.2	5.7	6.3	6.0	6.6	6.8
4H	6.3	6.9	6.6	7.2	7.5	5.9	6.5	6.3	6.8	7.1
6H	6.5	7.1	6.9	7.4	7.7	6.2	6.7	6.5	7.0	7.4
8H	6.6	7.1	7.0	7.4	7.8	6.2	6.7	6.6	7.0	7.4
12H	6.6	7.0	7.0	7.4	7.8	6.2	6.6	6.6	7.0	7.4
8H 4H	6.3	6.8	6.7	7.2	7.5	6.0	6.5	6.4	6.8	7.2
6H	6.7	7.1	7.1	7.5	7.9	6.3	6.7	6.7	7.1	7.5
8H	6.8	7.2	7.2	7.6	8.0	6.4	6.8	6.8	7.2	7.6
12H	6.8	7.1	7.3	7.6	8.1	6.4	6.7	6.9	7.2	7.6
12H 4H	6.3	6.8	6.7	7.1	7.5	6.0	6.4	6.4	6.8	7.2
6H	6.7	7.0	7.1	7.4	7.9	6.3	6.7	6.8	7.1	7.5
8H	6.8	7.1	7.3	7.6	8.0	6.4	6.7	6.9	7.2	7.6
Variations with the observer position at spacings:										
S = 1.0H	+ 0.8 / - 0.9					+ 0.8 / - 1.0				
1.5H	+ 1.4 / - 0.6					+ 1.2 / - 0.7				
2.0H	+ 1.1 / - 0.8					+ 1.1 / - 0.8				

CIE Pub.117, 961.9 lm Total Lamp Luminous Flux Correct (8log(F/F0) = -0.1)  
 Area: 0.111111 m2

C Range: 0 - 360DEG  
 C Interval: 22.5DEG  
 Test Speed: HIGH  
 Temperature:25.3DEG  
 Operators:  
 Test Date:2021-11-15

Range: 0 - 90DEG  
 Interval: 1.0DEG  
 Test System:EVERFINE GO-SPEX500\_V1 SYSTEM V2.00.421  
 Humidity:65.0%  
 Test Distance:3.080m [K=1.0000]  
 Remarks: PORTER

**UTILIZATION FACTORS TABLE**

Test:U:119.97V I:0.1129A P:13.302W PF:0.9433 Freq:59.98Hz Lamp Flux:961.94x1 lm		
NAME: LED-2-S15W-5CCT-2RRWH-2RTWH	TYPE:	WEIGHT:
SPEC.:3500K 90	DIM.:	SERIAL No.:
MFR.:	SUR.:	Shielding Angle:

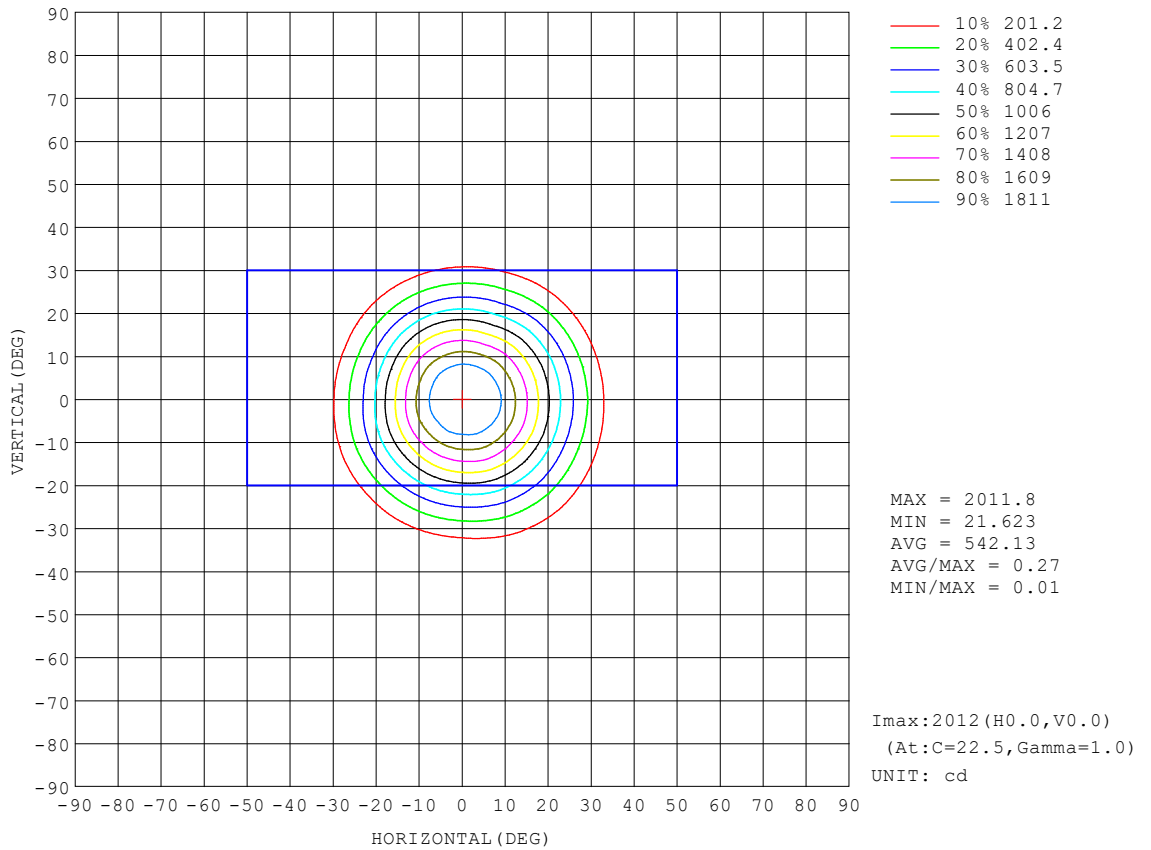
REFLECTANCE										
Ceiling	0.8	0.8	0.8	0.7	0.7	0.7	0.5	0.5	0.5	0
Walls	0.7	0.5	0.3	0.7	0.5	0.3	0.7	0.5	0.3	0
Working plane	0.2	0.2	0.2	0.2	0.2	0.2	0.2	0.2	0.2	0
ROOM INDEX	UTILIZATION FACTORS (PERCENT) $k(RI) \times RCR = 5$									
k = 0.60	87	80	76	86	80	76	85	79	76	72
0.80	94	88	84	93	88	84	92	87	84	80
1.00	98	93	89	98	92	89	96	92	88	84
1.25	102	97	94	101	97	93	99	95	92	88
1.50	105	100	97	104	100	96	102	98	95	91
2.00	108	104	100	107	103	100	104	101	98	93
2.50	110	106	103	108	105	102	105	102	100	94
3.00	111	108	105	110	106	104	106	104	102	95
4.00	114	111	108	111	109	107	108	106	104	97
5.00	115	112	111	113	111	109	109	107	106	98
ROOM INDEX	UF(total)									Direct
According to DIN EN 13032-2 2004			Suspended				SHRNOM = 1.25			

C Range: 0 - 360DEG  
 C Interval: 22.5DEG  
 Test Speed: HIGH  
 Temperature:25.3DEG  
 Operators:  
 Test Date:2021-11-15

Range: 0 - 90DEG  
 Interval: 1.0DEG  
 Test System:EVERFINE GO-SPEX500\_V1 SYSTEM V2.00.421  
 Humidity:65.0%  
 Test Distance:3.080m [K=1.0000]  
 Remarks: PORTER

ISOCANDELA DIAGRAM

Test:U:119.97V I:0.1129A P:13.302W PF:0.9433 Freq:59.98Hz Lamp Flux:961.94x1 lm		
NAME: LED-2-S15W-5CCT-2RRWH-2RTWH	TYPE:	WEIGHT:
SPEC.:3500K 90	DIM.:	SERIAL No.:
MFR.:	SUR.:	Shielding Angle:



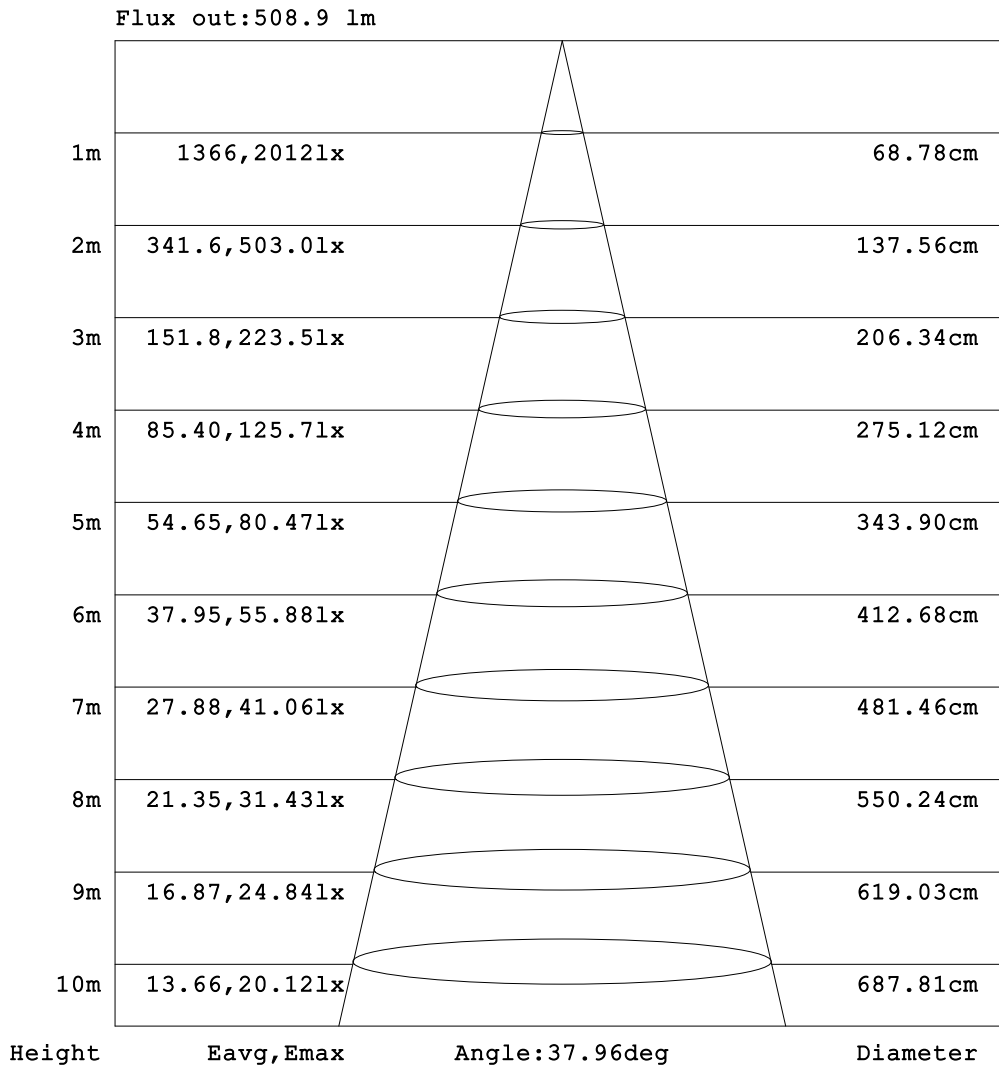
C Range: 0 - 360DEG  
 C Interval: 22.5DEG  
 Test Speed: HIGH  
 Temperature:25.3DEG  
 Operators:  
 Test Date:2021-11-15

Range: 0 - 90DEG  
 Interval: 1.0DEG  
 Test System:EVERFINE GO-SPEX500\_V1 SYSTEM V2.00.421  
 Humidity:65.0%  
 Test Distance:3.080m [K=1.0000]  
 Remarks: PORTER



**AAI Figure**

Test:U:119.97V I:0.1129A P:13.302W PF:0.9433 Freq:59.98Hz Lamp Flux:961.94x1 lm		
NAME: LED-2-S15W-5CCT-2RRWH-2RTWH	TYPE:	WEIGHT:
SPEC.:3500K 90	DIM.:	SERIAL No.:
MFR.:	SUR.:	Shielding Angle:



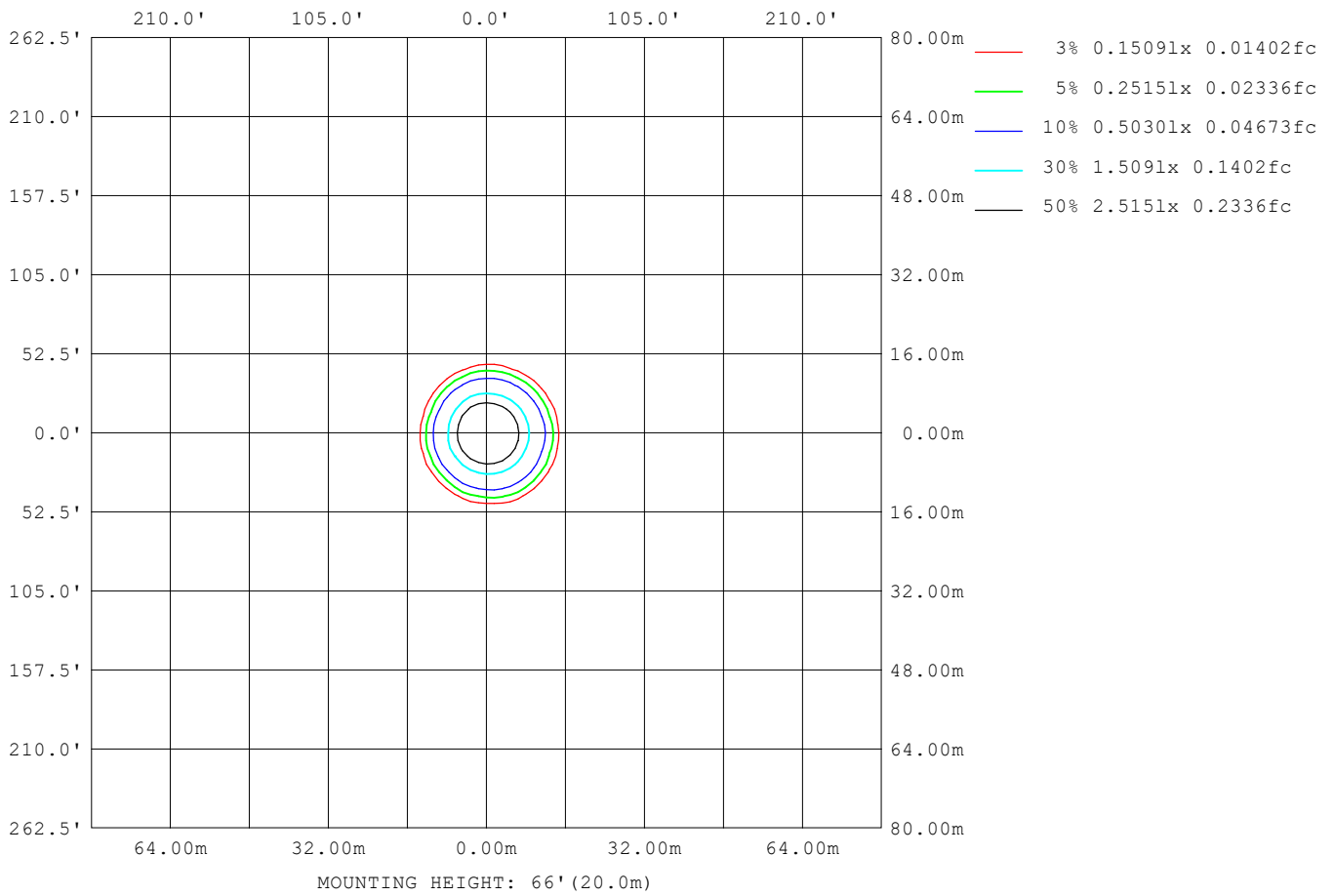
Note:The Curves indicate the illuminated area and the average illumination when the luminaire is at different distance.

C Range: 0 - 360DEG  
 C Interval: 22.5DEG  
 Test Speed: HIGH  
 Temperature:25.3DEG  
 Operators:  
 Test Date:2021-11-15

Range: 0 - 90DEG  
 Interval: 1.0DEG  
 Test System:EVERFINE GO-SPEX500\_V1 SYSTEM V2.00.421  
 Humidity:65.0%  
 Test Distance:3.080m [K=1.0000]  
 Remarks: PORTER

**ISOLUX DIAGRAM**

Test:U:119.97V I:0.1129A P:13.302W PF:0.9433 Freq:59.98Hz Lamp Flux:961.94x1 lm		
NAME: LED-2-S15W-5CCT-2RRWH-2RTWH	TYPE:	WEIGHT:
SPEC.:3500K 90	DIM.:	SERIAL No.:
MFR.:	SUR.:	Shielding Angle:



C Range: 0 - 360DEG  
 C Interval: 22.5DEG  
 Test Speed: HIGH  
 Temperature:25.3DEG  
 Operators:  
 Test Date:2021-11-15

Range: 0 - 90DEG  
 Interval: 1.0DEG  
 Test System:EVERFINE GO-SPEX500\_V1 SYSTEM V2.00.421  
 Humidity:65.0%  
 Test Distance:3.080m [K=1.0000]  
 Remarks: PORTER

**LED Avg.L Report**

Test:U:119.97V I:0.1129A P:13.302W PF:0.9433 Freq:59.98Hz Lamp Flux:961.94x1 lm		
NAME: LED-2-S15W-5CCT-2RRWH-2RTWH	TYPE:	WEIGHT:
SPEC.:3500K 90	DIM.:	SERIAL No.:
MFR.:	SUR.:	Shielding Angle:

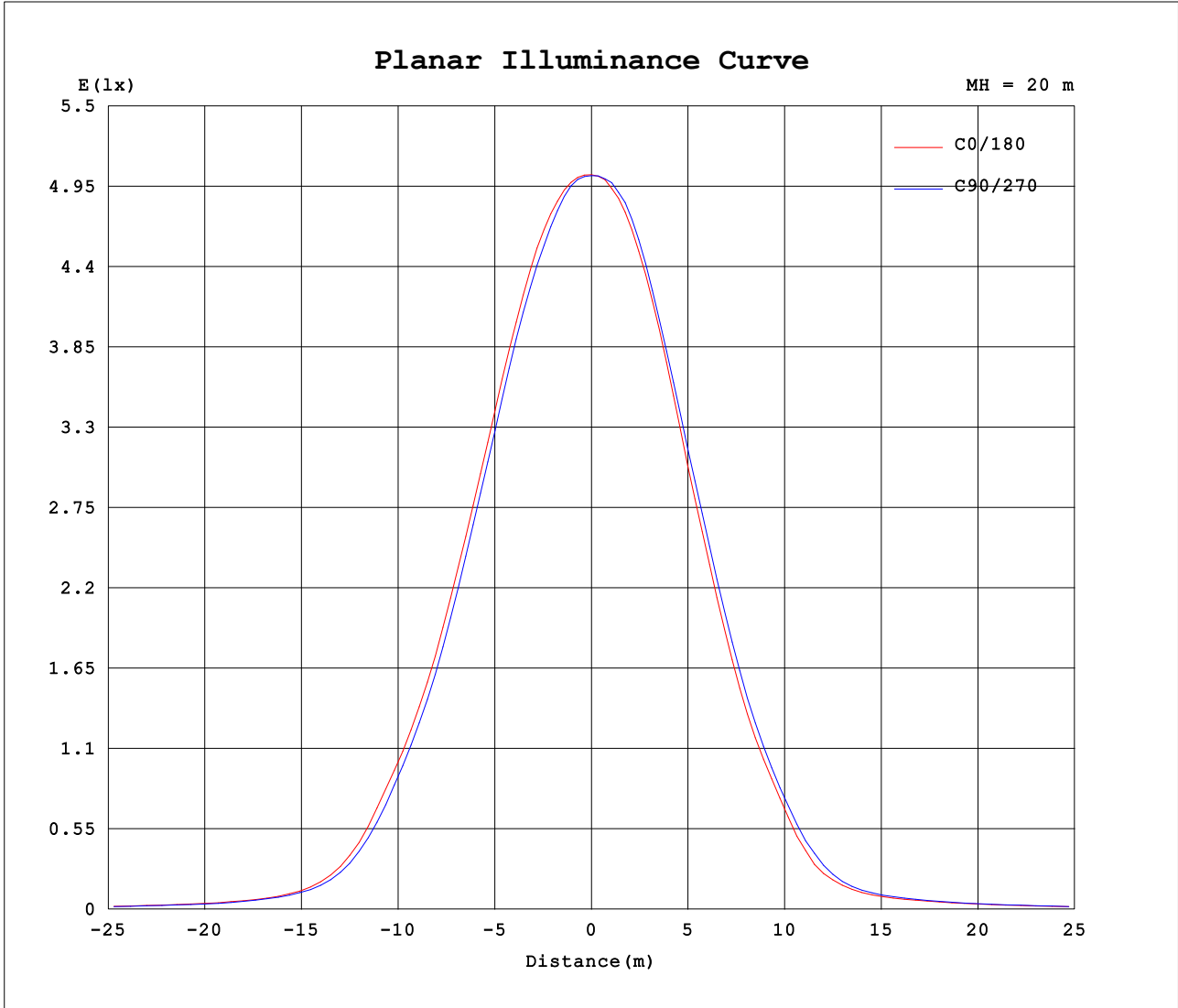
AvgL	cd/m2
L_0~180 (65) av	282
L_0~180 (75) av	226
L_0~180 (85) av	98
L_90~270 (65) av	282
L_90~270 (75) av	227
L_90~270 (85) av	62
L_45 (65) av	281
L_45 (75) av	226
L_45 (85) av	137

Standard: GB/T 29293-2012

C Range: 0 - 360DEG  
 C Interval: 22.5DEG  
 Test Speed: HIGH  
 Temperature:25.3DEG  
 Operators:  
 Test Date:2021-11-15

Range: 0 - 90DEG  
 Interval: 1.0DEG  
 Test System:EVERFINE GO-SPEX500\_V1 SYSTEM V2.00.421  
 Humidity:65.0%  
 Test Distance:3.080m [K=1.0000]  
 Remarks: PORTER

**Planar Illuminance Curve**



C Range: 0 - 360DEG  
 C Interval: 22.5DEG  
 Test Speed: HIGH  
 Temperature: 25.3DEG  
 Operators:  
 Test Date: 2021-11-15

Range: 0 - 90DEG  
 Interval: 1.0DEG  
 Test System: EVERFINE GO-SPEX500\_V1 SYSTEM V2.00.421  
 Humidity: 65.0%  
 Test Distance: 3.080m [K=1.0000]  
 Remarks: PORTER

**LUMINOUS DISTRIBUTION INTENSITY DATA**

Test:U:119.97V I:0.1129A P:13.302W PF:0.9433 Freq:59.98Hz Lamp Flux:961.94x1 lm		
NAME: LED-2-S15W-5CCT-2RRWH-2RTWH	TYPE:	WEIGHT:
SPEC.:3500K 90	DIM.:	SERIAL No.:
MFR.:	SUR.:	Shielding Angle:

Table--1

UNIT: cd

C (DEG) \ □ (DEG)	0	22.5	45	67.5	90	112.5	135	157.5	180	202.5	225	247.5	270	292.5	315	337.5			
0	2010	2010	2010	2010	2010	2010	2010	2010	2010	2010	2010	2010	2010	2010	2010	2010			
5	1961	1966	1952	1952	1937	1935	1923	1929	1930	1929	1946	1948	1959	1954	1961	1955			
10	1761	1768	1761	1744	1713	1699	1679	1677	1660	1654	1676	1677	1690	1699	1734	1744			
15	1419	1438	1427	1410	1361	1333	1309	1287	1247	1257	1294	1301	1303	1306	1368	1396			
20	1027	1045	1034	1013	963	929	902	874	823	823	860	879	884	894	970	1006			
25	660	663	671	652	604	578	547	523	480	470	486	509	521	538	604	639			
30	350	351	368	349	302	273	236	222	190	184	201	215	236	246	285	319			
35	138	147	156	147	120	110	99.0	91.7	84.6	83.1	90.0	92.8	95.4	102	117	127			
40	68.8	70.5	71.1	69.6	64.7	60.8	58.0	57.0	56.2	56.2	57.7	59.1	60.8	61.8	64.7	66.6			
45	46.0	45.9	44.7	43.8	42.7	42.0	41.6	41.7	41.8	42.0	42.6	43.1	44.0	44.5	45.1	45.3			
50	35.3	35.0	34.1	33.3	32.5	31.8	31.3	31.4	31.4	31.6	32.4	33.0	33.9	34.4	34.9	34.9			
55	24.8	24.6	24.0	23.4	22.8	22.3	22.2	22.5	22.7	23.0	23.5	23.9	24.4	24.6	24.8	24.7			
60	18.1	17.9	17.4	17.1	16.7	16.8	16.8	17.2	17.5	17.8	18.2	18.4	18.7	18.7	18.7	18.3			
65	13.4	13.2	12.8	12.6	12.4	12.4	12.4	12.8	13.1	13.3	13.7	13.8	14.1	14.0	13.9	13.6			
70	9.67	9.48	9.22	9.05	8.90	8.88	8.95	9.18	9.41	9.65	9.93	10.1	10.2	10.2	10.1	9.80			
75	6.61	6.46	6.28	6.16	6.04	6.01	6.03	6.21	6.36	6.55	6.78	6.90	7.03	6.99	6.91	6.70			
80	4.08	3.97	3.83	3.60	3.43	3.47	3.61	3.72	3.82	3.96	3.97	3.77	3.74	3.84	4.10	4.13			
85	0.81	1.93	1.37	1.07	0.78	0.98	1.18	1.66	1.10	1.68	1.33	1.05	0.42	1.01	1.41	1.87			
90	0.04	0.04	0.04	0.03	0.04	0.03	0.03	0.03	0.05	0.05	0.04	0.04	0.05	0.04	0.04	0.05			

C Range: 0 - 360DEG  
 C Interval: 22.5DEG  
 Test Speed: HIGH  
 Temperature:25.3DEG  
 Operators:  
 Test Date:2021-11-15

□ Range: 0 - 90DEG  
 □ Interval: 1.0DEG  
 Test System:EVERFINE GO-SPEX500\_V1 SYSTEM V2.00.421  
 Humidity:65.0%  
 Test Distance:3.080m [K=1.0000]  
 Remarks: PORTER