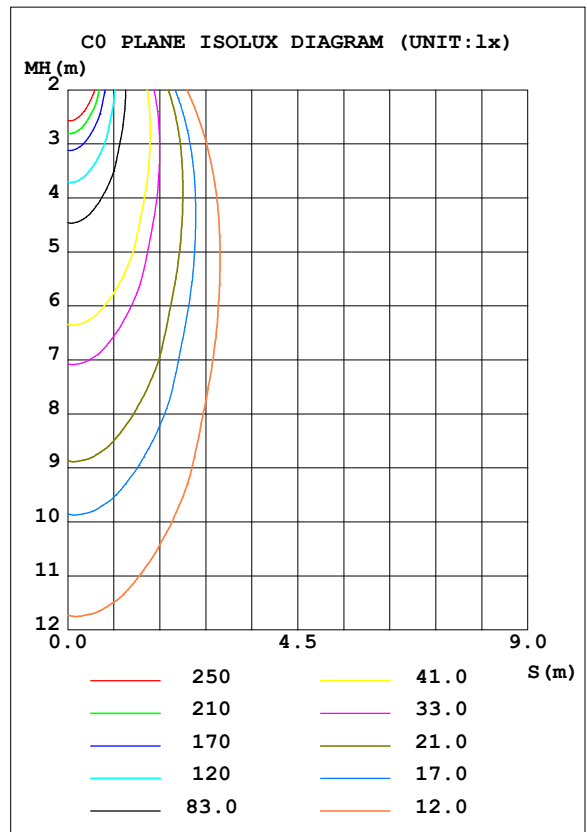
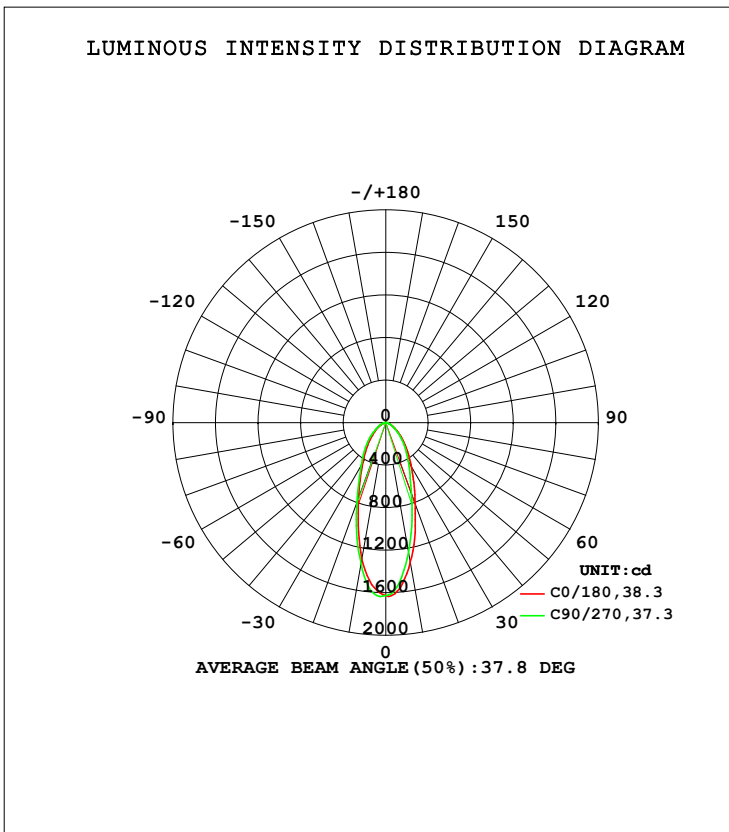


LUMINAIRE PHOTOMETRIC TEST REPORT

Test:U:119.96V I:0.1185A P:14.019W PF:0.9500 Freq:59.98Hz Lamp Flux:1269.02x1 lm		
NAME: LED-6-S15W-5CCT-FG-WH	TYPE:	WEIGHT:
SPEC.:2700K 90	DIM.:	SERIAL No.:
MFR.: Light by Lotus	SUR.:	Shielding Angle:

DATA OF LAMP		PHOTOMETRIC DATA Eff: 90.52 lm/W			
MODEL		I _{max} (cd)	1638	S/MH (C0/180)	0.59
NOMINAL POWER (W)	15	LOR (%)	100.0	S/MH (C90/270)	0.63
RATED VOLTAGE (V)	120	TOTAL FLUX (lm)	1269.0	<input type="checkbox"/> UP, DN (C0-180)	0.0, 48.9
NOMINAL FLUX (lm)	1269.02	CIE CLASS	DIRECT	<input type="checkbox"/> UP, DN (C180-360)	0.0, 51.1
LAMPS INSIDE	1	<input type="checkbox"/> up (%)	0.0	CIBSE SHR NOM	0.50
TEST VOLTAGE (V)	120	<input type="checkbox"/> down (%)	100.0	CIBSE SHR MAX	0.70



C Range: 0 - 360DEG
 C Interval: 22.5DEG
 Test Speed: HIGH
 Temperature: 25.3DEG
 Operators:
 Test Date: 2021-08-04

Range: 0 - 90DEG
 Interval: 1.0DEG
 Test System: EVERFINE GO-SPEX500_V1 SYSTEM V2.00.421
 Humidity: 65.0%
 Test Distance: 3.080m [K=1.0000]
 Remarks: PORTER

ZONAL FLUX DIAGRAM

ZONAL FLUX DIAGRAM:

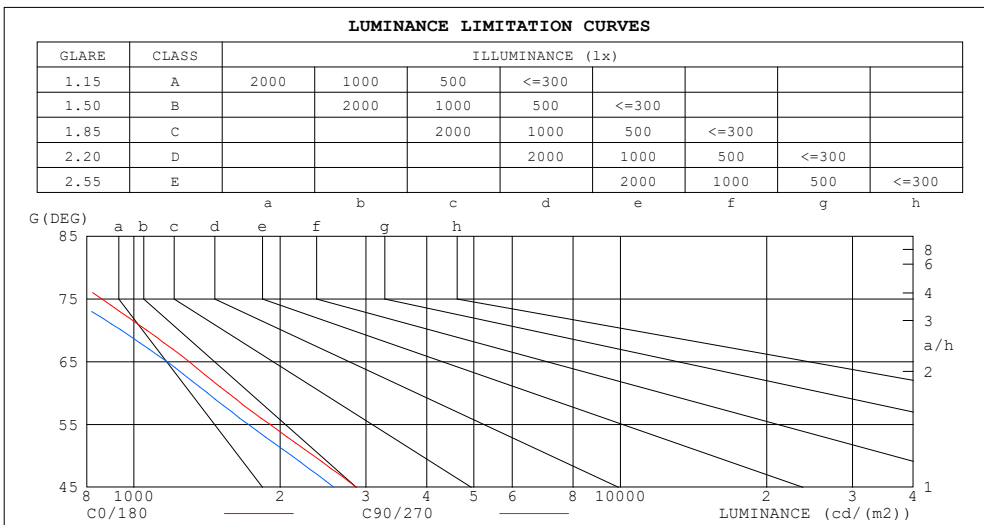
mm	C0	C45	C90	C135	C180	C225	C270	C315	mm	□ zone	□ total	%lum, lamp
10	1332	1264	1238	1277	1302	1321	1346	1382	0- 10	139.7	139.7	11,11
20	809.8	746.0	709.8	730.5	750.7	761.2	799.6	826.6	10- 20	282.9	422.6	33.3,33.3
30	485.2	450.7	427.3	425.3	432.6	440.5	464.3	491.9	20- 30	269.2	691.8	54.5,54.5
40	293.2	286.0	265.7	253.1	257.4	280.0	292.0	297.5	30- 40	223.2	915.0	72.1,72.1
50	164.9	166.2	151.1	137.9	143.8	163.5	170.5	165.9	40- 50	164.6	1080	85.1,85.1
60	85.61	86.51	78.90	71.46	75.21	85.66	89.53	84.59	50- 60	103.9	1184	93.3,93.3
70	39.81	39.21	35.91	32.83	34.42	38.93	41.80	39.60	60- 70	57.64	1241	97.8,97.8
80	13.04	10.53	6.742	8.842	10.56	11.22	10.95	13.05	70- 80	24.43	1266	99.7,99.7
90	0.0675	0.0688	0.0699	0.0724	0.1205	0.1137	0.1024	0.1017	80- 90	3.434	1269	100,100
100									90-100			
110									100-110			
120									110-120			
130									120-130			
140									130-140			
150									140-150			
160									150-160			
170									160-170			
180									170-180			
DEG	LUMINOUS INTENSITY:cd									UNIT:lm		

C Range: 0 - 360DEG
 C Interval: 22.5DEG
 Test Speed: HIGH
 Temperature:25.3DEG
 Operators:
 Test Date:2021-08-04

□ Range: 0 - 90DEG
 □ Interval: 1.0DEG
 Test System:EVERFINE GO-SPEX500_V1 SYSTEM V2.00.421
 Humidity:65.0%
 Test Distance:3.080m [K=1.0000]
 Remarks: PORTER

LUMINANCE LIMITATION CURVES

Test:U:119.96V I:0.1185A P:14.019W PF:0.9500 Freq:59.98Hz Lamp Flux:1269.02x1 lm		
NAME: LED-6-S15W-5CCT-FG-WH	TYPE:	WEIGHT:
SPEC.:2700K 90	DIM.:	SERIAL No.:
MFR.: Light by Lotus	SUR.:	Shielding Angle:



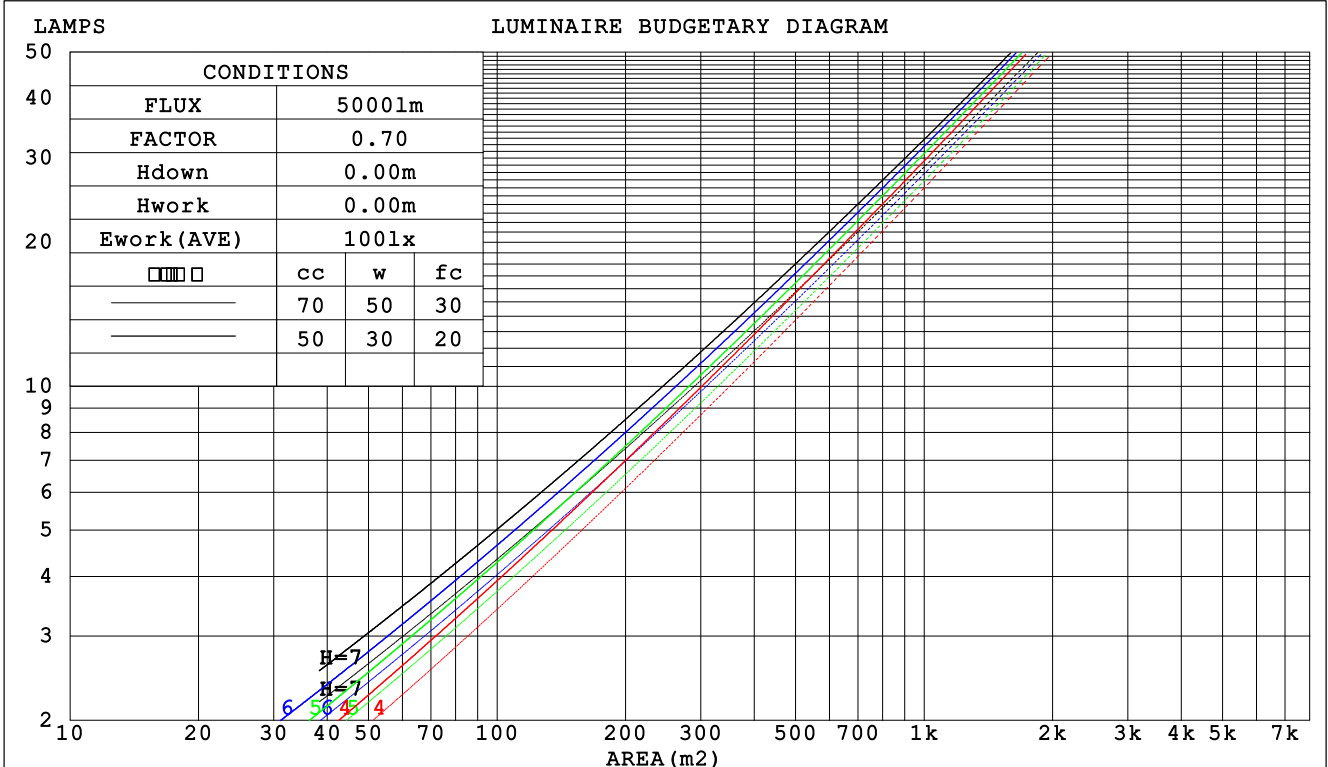
C Range: 0 - 360DEG
 C Interval: 22.5DEG
 Test Speed: HIGH
 Temperature:25.3DEG
 Operators:
 Test Date:2021-08-04

Range: 0 - 90DEG
 Interval: 1.0DEG
 Test System:EVERFINE GO-SPEX500_V1 SYSTEM V2.00.421
 Humidity:65.0%
 Test Distance:3.080m [K=1.0000]
 Remarks: PORTER

CU AND LUMINAIRE BUDGETARY ESTIMATE DIAGRAM

Test:U:119.96V I:0.1185A P:14.019W PF:0.9500 Freq:59.98Hz Lamp Flux:1269.02x1 lm		
NAME: LED-6-S15W-5CCT-FG-WH	TYPE:	WEIGHT:
SPEC.:2700K 90	DIM.:	SERIAL No.:
MFR.: Light by Lotus	SUR.:	Shielding Angle:

□cc	80%			70%			50%			30%			10%			0
□w	50%	30%	10%	50%	30%	10%	50%	30%	10%	50%	30%	10%	50%	30%	10%	0
□fc	20%			20%			20%			20%			20%			0
RCR	RCR:Room Cavity Ratio						Coefficients of Utilization(CU)									
0.0	1.19	1.19	1.19	1.16	1.16	1.16	1.11	1.11	1.11	1.06	1.06	1.06	1.02	1.02	1.02	.00
1.0	1.09	1.06	1.03	1.07	1.04	1.01	1.02	1.00	.98	.99	.97	.95	.95	.94	.92	.91
2.0	.99	.94	.90	.97	.93	.89	.94	.90	.87	.91	.88	.85	.88	.85	.83	.81
3.0	.91	.85	.80	.89	.84	.79	.86	.82	.78	.84	.80	.77	.82	.78	.75	.74
4.0	.83	.77	.72	.82	.76	.71	.80	.75	.70	.78	.73	.69	.76	.72	.69	.67
5.0	.77	.70	.65	.76	.70	.65	.74	.68	.64	.72	.67	.63	.71	.66	.63	.61
6.0	.71	.65	.60	.71	.64	.59	.69	.63	.59	.68	.62	.58	.66	.62	.58	.56
7.0	.67	.60	.55	.66	.59	.55	.65	.59	.54	.63	.58	.54	.62	.57	.54	.52
8.0	.62	.56	.51	.62	.55	.51	.61	.55	.51	.59	.54	.50	.58	.54	.50	.49
9.0	.59	.52	.47	.58	.52	.47	.57	.51	.47	.56	.51	.47	.55	.50	.47	.45
10.0	.55	.49	.45	.55	.49	.44	.54	.48	.44	.53	.48	.44	.52	.47	.44	.43



C Range: 0 - 360DEG
 C Interval: 22.5DEG
 Test Speed: HIGH
 Temperature:25.3DEG
 Operators:
 Test Date:2021-08-04

□ Range: 0 - 90DEG
 □ Interval: 1.0DEG
 Test System:EVERFINE GO-SPEX500_V1 SYSTEM V2.00.421
 Humidity:65.0%
 Test Distance:3.080m [K=1.0000]
 Remarks: PORTER

WEC AND CCEC

Test:U:119.96V I:0.1185A P:14.019W PF:0.9500 Freq:59.98Hz Lamp Flux:1269.02x1 lm		
NAME: LED-6-S15W-5CCT-FG-WH	TYPE:	WEIGHT:
SPEC.:2700K 90	DIM.:	SERIAL No.:
MFR.: Light by Lotus	SUR.:	Shielding Angle:

<input type="checkbox"/> cc	80%	70%	50%	30%	10%	0
<input type="checkbox"/> w	50% 30% 10%	50% 30% 10%	50% 30% 10%	50% 30% 10%	50% 30% 10%	0
<input type="checkbox"/> fc	20%	20%	20%	20%	20%	0
RCR	RCR:Room Cavity Ratio		Wall Exitance Coefficients (WEC)			
0.0						
1.0	.217 .124 .039	.211 .120 .038	.198 .113 .036	.186 .107 .034	.175 .102 .033	
2.0	.209 .115 .035	.203 .112 .035	.192 .107 .033	.182 .102 .032	.173 .098 .031	
3.0	.198 .105 .032	.193 .103 .031	.183 .099 .030	.175 .096 .029	.166 .092 .029	
4.0	.186 .097 .028	.182 .095 .028	.174 .092 .028	.166 .089 .027	.159 .086 .026	
5.0	.175 .089 .026	.172 .088 .026	.164 .086 .025	.158 .083 .025	.151 .081 .024	
6.0	.165 .083 .024	.162 .082 .024	.156 .080 .023	.150 .078 .023	.144 .076 .022	
7.0	.156 .077 .022	.153 .076 .022	.147 .075 .021	.142 .073 .021	.137 .071 .021	
8.0	.148 .072 .020	.145 .071 .020	.140 .070 .020	.135 .068 .020	.131 .067 .020	
9.0	.140 .068 .019	.138 .067 .019	.133 .066 .019	.129 .065 .018	.125 .063 .018	
10.0	.133 .064 .018	.131 .063 .018	.127 .062 .017	.123 .061 .017	.119 .060 .017	

<input type="checkbox"/> cc	80%	70%	50%	30%	10%	0
<input type="checkbox"/> w	50% 30% 10%	50% 30% 10%	50% 30% 10%	50% 30% 10%	50% 30% 10%	0
<input type="checkbox"/> fc	20%	20%	20%	20%	20%	0
RCR	RCR:Room Cavity Ratio		Ceiling Cavity Exitance Coefficients (CCEC)			
0.0	.190 .190 .190	.163 .163 .163	.111 .111 .111	.064 .064 .064	.020 .020 .020	
1.0	.174 .157 .142	.149 .135 .122	.102 .093 .084	.059 .054 .049	.019 .017 .016	
2.0	.161 .132 .108	.138 .114 .093	.095 .079 .065	.055 .046 .038	.018 .015 .012	
3.0	.151 .114 .084	.129 .098 .073	.089 .068 .051	.051 .040 .030	.016 .013 .010	
4.0	.141 .100 .068	.121 .086 .059	.083 .060 .041	.048 .035 .024	.016 .011 .008	
5.0	.133 .088 .055	.114 .076 .048	.079 .053 .034	.046 .031 .020	.015 .010 .007	
6.0	.126 .079 .046	.108 .069 .040	.075 .048 .028	.043 .028 .017	.014 .009 .006	
7.0	.119 .072 .039	.103 .062 .034	.071 .044 .024	.041 .026 .014	.013 .008 .005	
8.0	.113 .066 .034	.098 .057 .029	.067 .040 .021	.039 .024 .012	.013 .008 .004	
9.0	.108 .061 .029	.093 .053 .025	.064 .037 .018	.037 .022 .011	.012 .007 .004	
10.0	.103 .057 .026	.089 .049 .022	.061 .035 .016	.036 .020 .010	.012 .007 .003	

C Range: 0 - 360DEG
 C Interval: 22.5DEG
 Test Speed: HIGH
 Temperature:25.3DEG
 Operators:
 Test Date:2021-08-04

Range: 0 - 90DEG
 Interval: 1.0DEG
 Test System:EVERFINE GO-SPEX500_V1 SYSTEM V2.00.421
 Humidity:65.0%
 Test Distance:3.080m [K=1.0000]
 Remarks: PORTER

UGR(Unified Glare Rating) Table

Test:U:119.96V I:0.1185A P:14.019W PF:0.9500 Freq:59.98Hz Lamp Flux:1269.02x1 lm		
NAME: LED-6-S15W-5CCT-FG-WH	TYPE:	WEIGHT:
SPEC.:2700K 90	DIM.:	SERIAL No.:
MFR.: Light by Lotus	SUR.:	Shielding Angle:

ceiling/cavity	0.7	0.7	0.5	0.5	0.3	0.7	0.7	0.5	0.5	0.3
walls	0.5	0.3	0.5	0.3	0.3	0.5	0.3	0.5	0.3	0.3
working plane	0.2	0.2	0.2	0.2	0.2	0.2	0.2	0.2	0.2	0.2
Room dimensions	Viewed crosswise					Viewed endwise				
x = 2H y = 2H	12.8	14.0	13.1	14.1	14.3	12.4	13.6	12.7	13.7	13.9
3H	13.4	14.4	13.7	14.7	14.9	12.9	14.0	13.2	14.2	14.4
4H	13.6	14.6	13.9	14.8	15.0	13.1	14.1	13.4	14.3	14.5
6H	13.6	14.6	14.0	14.8	15.1	13.1	14.0	13.4	14.3	14.5
8H	13.6	14.5	14.0	14.8	15.1	13.0	13.9	13.3	14.2	14.5
12H	13.6	14.5	13.9	14.8	15.0	13.0	13.8	13.3	14.1	14.4
4H 2H	13.0	14.0	13.3	14.3	14.5	12.7	13.7	13.0	13.9	14.1
3H	13.7	14.6	14.1	14.9	15.2	13.3	14.2	13.7	14.5	14.8
4H	14.0	14.8	14.4	15.1	15.4	13.6	14.3	13.9	14.6	15.0
6H	14.2	14.8	14.5	15.2	15.5	13.6	14.3	14.0	14.6	15.0
8H	14.2	14.8	14.6	15.2	15.5	13.6	14.2	14.0	14.6	14.9
12H	14.2	14.7	14.6	15.1	15.5	13.5	14.1	13.9	14.5	14.9
8H 4H	14.0	14.7	14.4	15.0	15.4	13.6	14.2	14.0	14.6	15.0
6H	14.2	14.8	14.7	15.2	15.6	13.7	14.2	14.1	14.6	15.0
8H	14.3	14.8	14.7	15.2	15.6	13.6	14.1	14.1	14.5	15.0
12H	14.3	14.7	14.8	15.1	15.6	13.6	14.0	14.1	14.4	14.9
12H 4H	14.0	14.6	14.4	14.9	15.3	13.6	14.2	14.0	14.5	14.9
6H	14.2	14.7	14.7	15.1	15.5	13.7	14.1	14.1	14.5	15.0
8H	14.3	14.7	14.7	15.1	15.6	13.6	14.0	14.1	14.5	14.9
Variations with the observer position at spacings:										
S = 1.0H	+ 0.6 / - 0.9					+ 0.7 / - 1.0				
1.5H	+ 0.5 / - 0.5					+ 0.5 / - 0.7				
2.0H	+ 1.3 / - 1.0					+ 1.3 / - 1.3				

CIE Pub.117, 1269 lm Total Lamp Luminous Flux Correct (8log(F/F0) = 0.8)
 Area: 0.111111 m2

C Range: 0 - 360DEG
 C Interval: 22.5DEG
 Test Speed: HIGH
 Temperature:25.3DEG
 Operators:
 Test Date:2021-08-04

Range: 0 - 90DEG
 Interval: 1.0DEG
 Test System:EVERFINE GO-SPEX500_V1 SYSTEM V2.00.421
 Humidity:65.0%
 Test Distance:3.080m [K=1.0000]
 Remarks: PORTER

UTILIZATION FACTORS TABLE

Test:U:119.96V I:0.1185A P:14.019W PF:0.9500 Freq:59.98Hz Lamp Flux:1269.02x1 lm		
NAME: LED-6-S15W-5CCT-FG-WH	TYPE:	WEIGHT:
SPEC.:2700K 90	DIM.:	SERIAL No.:
MFR.: Light by Lotus	SUR.:	Shielding Angle:

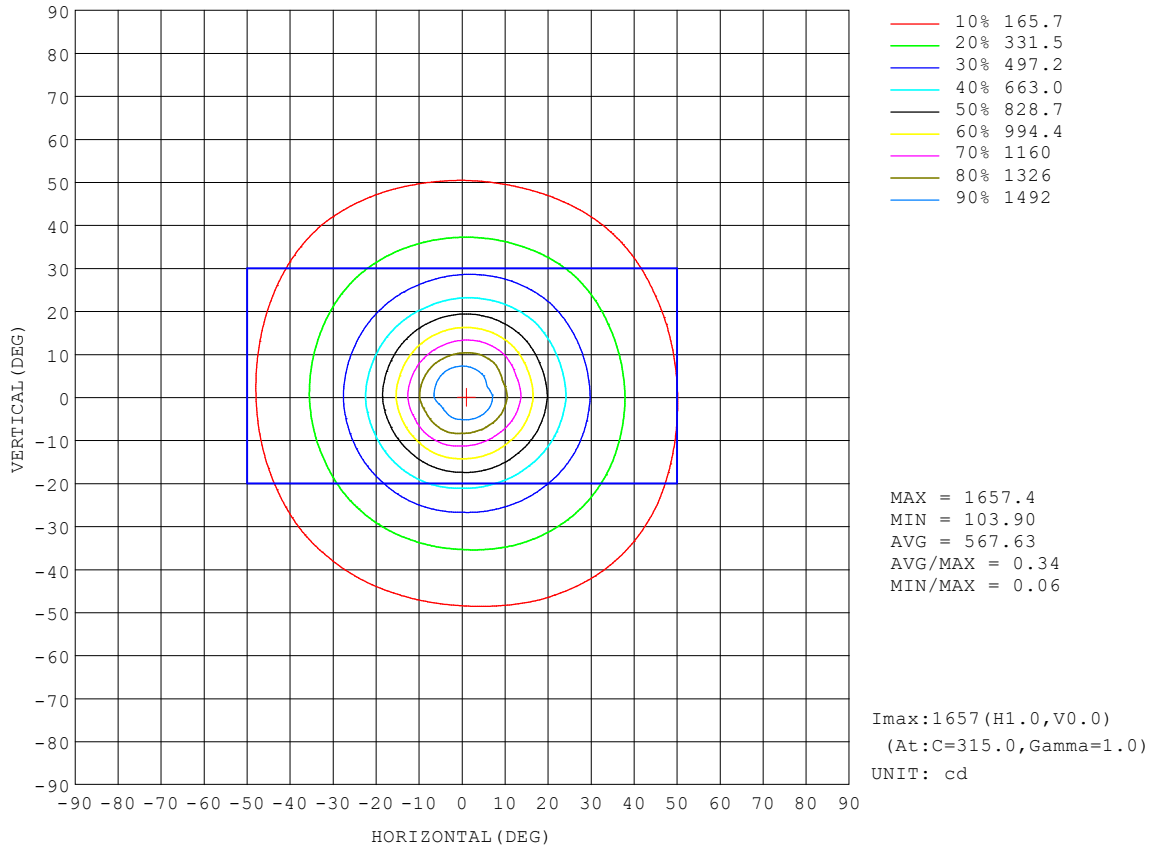
REFLECTANCE										
Ceiling	0.8	0.8	0.8	0.7	0.7	0.7	0.5	0.5	0.5	0
Walls	0.7	0.5	0.3	0.7	0.5	0.3	0.7	0.5	0.3	0
Working plane	0.2	0.2	0.2	0.2	0.2	0.2	0.2	0.2	0.2	0
ROOM INDEX	UTILIZATION FACTORS (PERCENT) $k(RI) \times RCR = 5$									
k = 0.60	74	65	60	73	65	60	72	65	60	55
0.80	83	75	69	82	74	69	81	74	69	64
1.00	90	82	77	89	81	76	87	82	76	71
1.25	95	88	83	94	87	83	92	86	82	76
1.50	99	92	87	98	91	87	95	90	86	80
2.00	103	98	93	102	97	92	99	94	91	85
2.50	106	101	97	104	99	96	101	97	94	87
3.00	108	104	100	106	102	99	103	99	97	89
4.00	111	107	104	109	105	103	105	102	100	92
5.00	113	109	107	110	108	105	106	104	102	94
ROOM INDEX	UF(total)									Direct
According to DIN EN 13032-2 2004			Suspended				SHRNOM = 1.25			

C Range: 0 - 360DEG
 C Interval: 22.5DEG
 Test Speed: HIGH
 Temperature:25.3DEG
 Operators:
 Test Date:2021-08-04

Range: 0 - 90DEG
 Interval: 1.0DEG
 Test System:EVERFINE GO-SPEX500_V1 SYSTEM V2.00.421
 Humidity:65.0%
 Test Distance:3.080m [K=1.0000]
 Remarks: PORTER

ISOCANDELA DIAGRAM

Test:U:119.96V I:0.1185A P:14.019W PF:0.9500 Freq:59.98Hz Lamp Flux:1269.02x1 lm		
NAME: LED-6-S15W-5CCT-FG-WH	TYPE:	WEIGHT:
SPEC.:2700K 90	DIM.:	SERIAL No.:
MFR.: Light by Lotus	SUR.:	Shielding Angle:

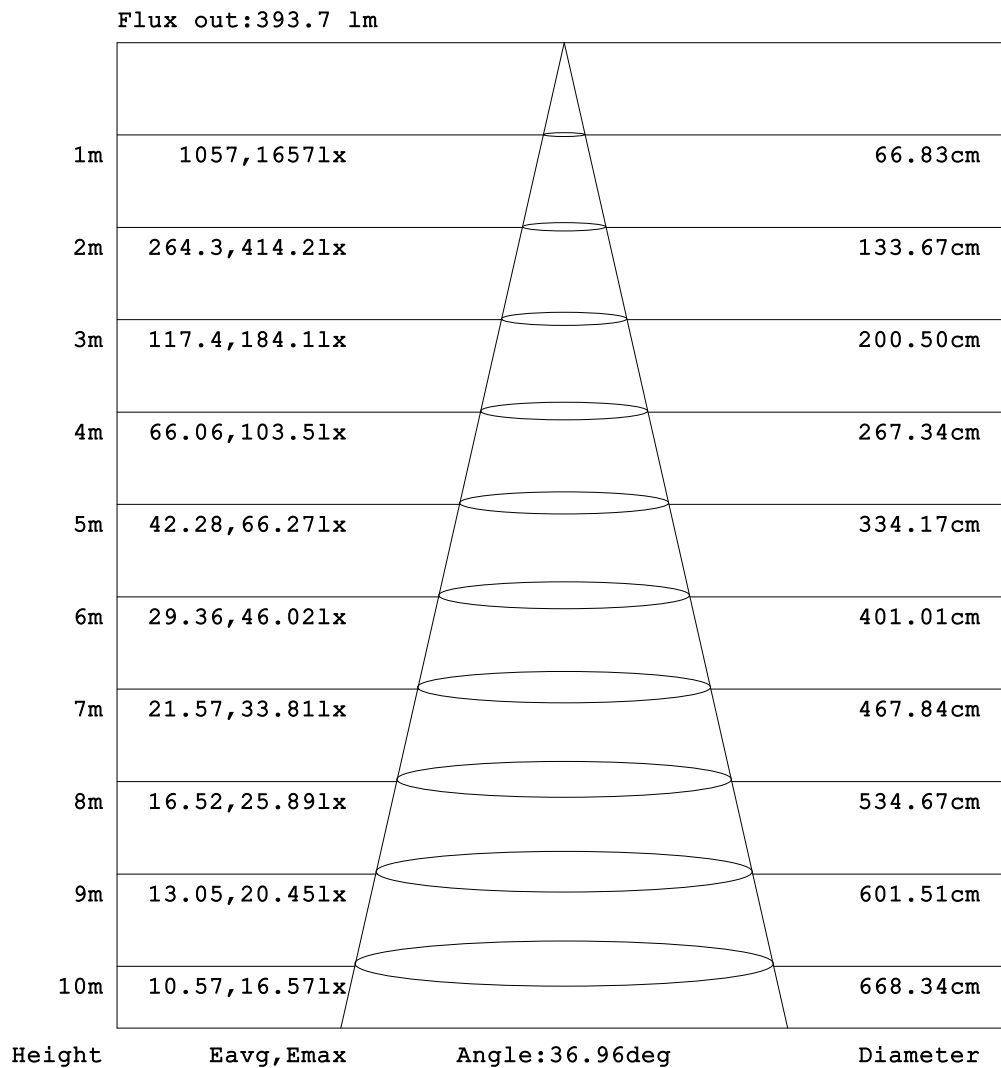


C Range: 0 - 360DEG
 C Interval: 22.5DEG
 Test Speed: HIGH
 Temperature:25.3DEG
 Operators:
 Test Date:2021-08-04

Range: 0 - 90DEG
 Interval: 1.0DEG
 Test System:EVERFINE GO-SPEX500_V1 SYSTEM V2.00.421
 Humidity:65.0%
 Test Distance:3.080m [K=1.0000]
 Remarks: PORTER

AAI Figure

Test:U:119.96V I:0.1185A P:14.019W PF:0.9500 Freq:59.98Hz Lamp Flux:1269.02x1 lm		
NAME: LED-6-S15W-5CCT-FG-WH	TYPE:	WEIGHT:
SPEC.:2700K 90	DIM.:	SERIAL No.:
MFR.: Light by Lotus	SUR.:	Shielding Angle:



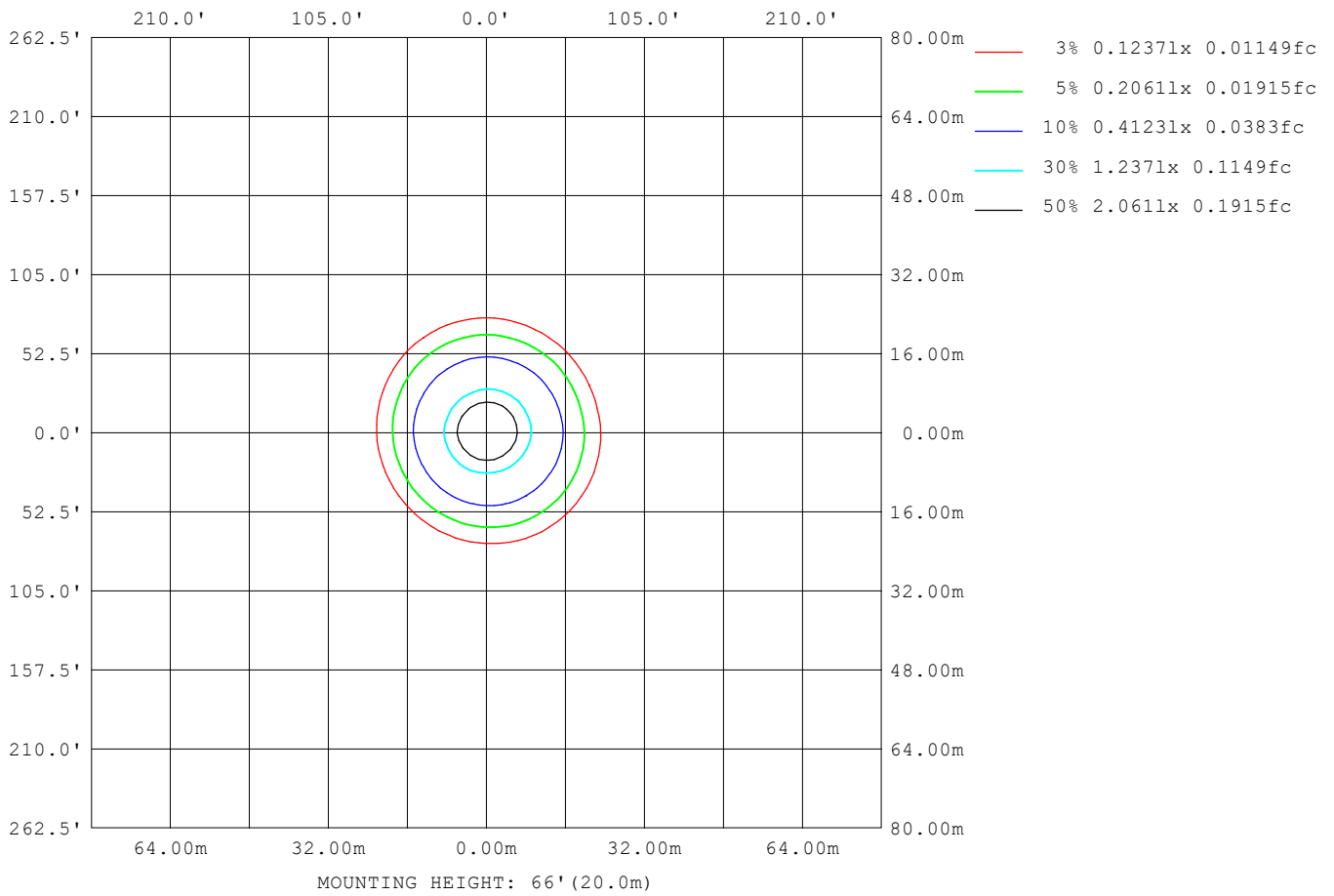
Note:The Curves indicate the illuminated area and the average illumination when the luminaire is at different distance.

C Range: 0 - 360DEG
 C Interval: 22.5DEG
 Test Speed: HIGH
 Temperature:25.3DEG
 Operators:
 Test Date:2021-08-04

Range: 0 - 90DEG
 Interval: 1.0DEG
 Test System:EVERFINE GO-SPEX500_V1 SYSTEM V2.00.421
 Humidity:65.0%
 Test Distance:3.080m [K=1.0000]
 Remarks: PORTER

ISOLUX DIAGRAM

Test:U:119.96V I:0.1185A P:14.019W PF:0.9500 Freq:59.98Hz Lamp Flux:1269.02x1 lm		
NAME: LED-6-S15W-5CCT-FG-WH	TYPE:	WEIGHT:
SPEC.:2700K 90	DIM.:	SERIAL No.:
MFR.: Light by Lotus	SUR.:	Shielding Angle:



C Range: 0 - 360DEG
 C Interval: 22.5DEG
 Test Speed: HIGH
 Temperature:25.3DEG
 Operators:
 Test Date:2021-08-04

Range: 0 - 90DEG
 Interval: 1.0DEG
 Test System:EVERFINE GO-SPEX500_V1 SYSTEM V2.00.421
 Humidity:65.0%
 Test Distance:3.080m [K=1.0000]
 Remarks: PORTER

LED Avg.L Report

Test:U:119.96V I:0.1185A P:14.019W PF:0.9500 Freq:59.98Hz Lamp Flux:1269.02x1 lm		
NAME: LED-6-S15W-5CCT-FG-WH	TYPE:	WEIGHT:
SPEC.:2700K 90	DIM.:	SERIAL No.:
MFR.: Light by Lotus	SUR.:	Shielding Angle:

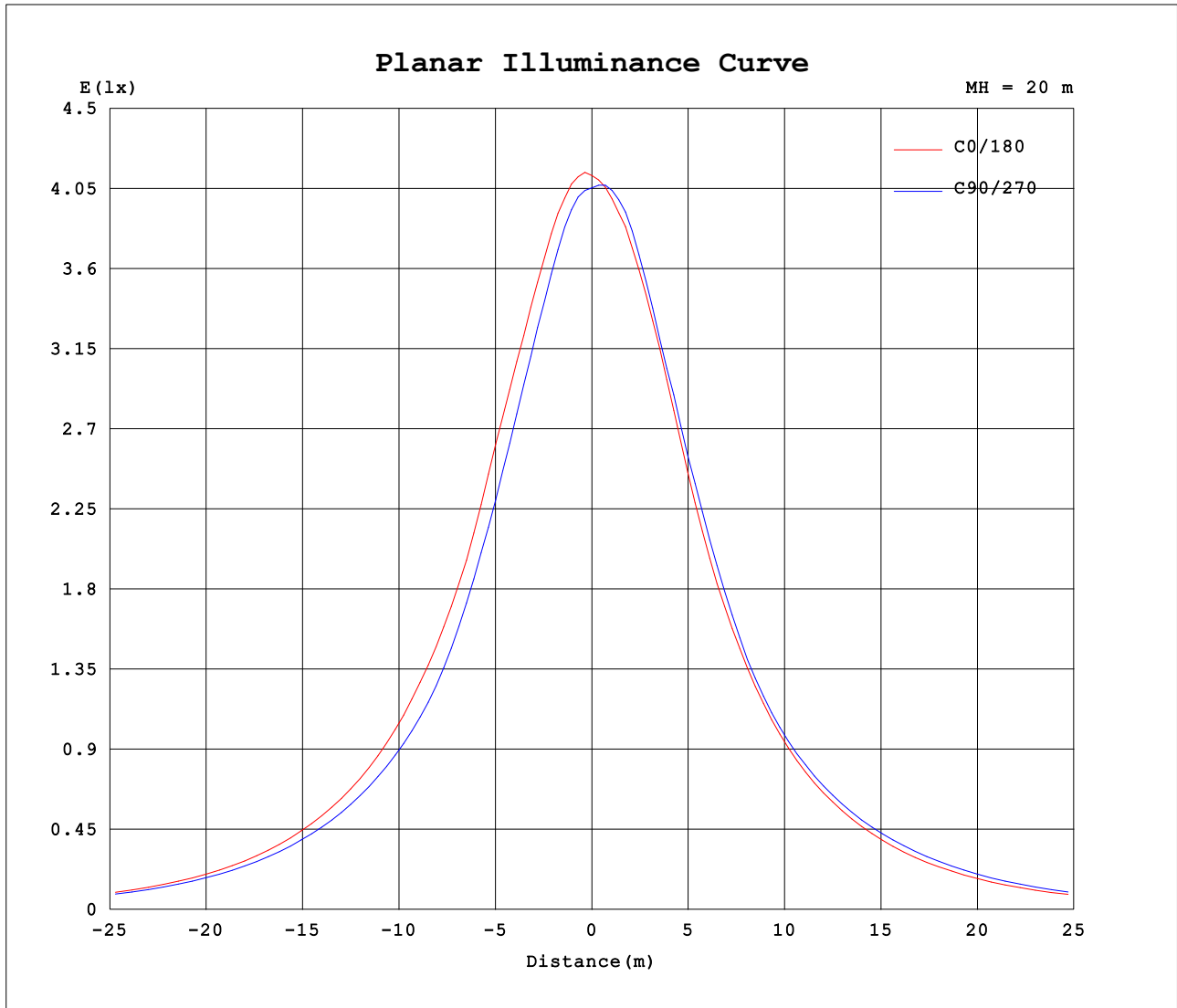
AvgL	cd/m2
L_0~180 (65) av	1203
L_0~180 (75) av	783
L_0~180 (85) av	300
L_90~270 (65) av	1259
L_90~270 (75) av	802
L_90~270 (85) av	70
L_45 (65) av	1224
L_45 (75) av	790
L_45 (85) av	176

Standard: GB/T 29293-2012

C Range: 0 - 360DEG
 C Interval: 22.5DEG
 Test Speed: HIGH
 Temperature:25.3DEG
 Operators:
 Test Date:2021-08-04

Range: 0 - 90DEG
 Interval: 1.0DEG
 Test System:EVERFINE GO-SPEX500_V1 SYSTEM V2.00.421
 Humidity:65.0%
 Test Distance:3.080m [K=1.0000]
 Remarks: PORTER

Planar Illuminance Curve



C Range: 0 - 360DEG
 C Interval: 22.5DEG
 Test Speed: HIGH
 Temperature: 25.3DEG
 Operators:
 Test Date: 2021-08-04

Range: 0 - 90DEG
 Interval: 1.0DEG
 Test System: EVERFINE GO-SPEX500_V1 SYSTEM V2.00.421
 Humidity: 65.0%
 Test Distance: 3.080m [K=1.0000]
 Remarks: PORTER

LUMINOUS DISTRIBUTION INTENSITY DATA

Test:U:119.96V I:0.1185A P:14.019W PF:0.9500 Freq:59.98Hz Lamp Flux:1269.02x1 lm		
NAME: LED-6-S15W-5CCT-FG-WH	TYPE:	WEIGHT:
SPEC.:2700K 90	DIM.:	SERIAL No.:
MFR.: Light by Lotus	SUR.:	Shielding Angle:

Table--1

UNIT: cd

C (DEG) \ □ (DEG)	0	22.5	45	67.5	90	112.5	135	157.5	180	202.5	225	247.5	270	292.5	315	337.5			
0	1626	1626	1626	1626	1626	1626	1626	1626	1626	1626	1626	1626	1626	1626	1626	1626			
5	1561	1550	1532	1516	1504	1512	1509	1517	1530	1543	1574	1583	1590	1583	1570	1556			
10	1332	1306	1264	1238	1238	1263	1277	1293	1302	1308	1321	1325	1346	1373	1382	1349			
15	1071	1027	987	968	956	967	970	994	1000	1001	1021	1040	1066	1090	1109	1093			
20	810	780	746	723	710	722	730	745	751	749	761	774	800	814	827	822			
25	627	597	569	549	541	551	554	566	565	559	565	573	596	620	641	638			
30	485	470	451	439	427	426	425	432	433	435	440	448	464	479	492	492			
35	379	371	360	351	338	333	331	333	335	341	352	358	368	375	384	382			
40	293	292	286	278	266	257	253	255	257	267	280	287	292	293	297	295			
45	222	225	222	216	203	194	189	190	195	204	218	223	227	224	226	222			
50	165	168	166	162	151	144	138	139	144	152	164	168	171	167	166	163			
55	120	123	121	118	110	104	99.4	101	105	111	120	123	125	122	119	117			
60	85.6	87.7	86.5	83.8	78.9	75.0	71.5	72.1	75.2	79.8	85.7	88.4	89.5	87.4	84.6	83.1			
65	60.1	61.6	60.3	58.3	55.1	52.4	50.3	50.8	52.9	55.9	59.9	62.0	63.2	61.5	59.5	58.5			
70	39.8	40.5	39.2	37.9	35.9	34.3	32.8	33.1	34.4	36.3	38.9	40.5	41.8	40.8	39.6	38.9			
75	24.3	24.5	23.4	22.1	20.7	20.1	19.7	20.1	20.7	21.7	23.2	24.4	25.5	25.0	24.4	23.9			
80	13.0	12.8	10.5	8.04	6.74	7.19	8.84	10.2	10.6	11.1	11.2	10.5	11.0	11.5	13.0	13.0			
85	3.36	3.52	1.30	0.12	0.11	0.09	0.91	2.07	2.45	2.67	1.75	1.20	1.24	1.64	2.85	4.42			
90	0.07	0.07	0.07	0.07	0.07	0.07	0.07	0.07	0.12	0.12	0.11	0.11	0.10	0.10	0.10	0.11			

C Range: 0 - 360DEG □ Range: 0 - 90DEG
 C Interval: 22.5DEG □ Interval: 1.0DEG
 Test Speed: HIGH Test System:EVERFINE GO-SPEX500_V1 SYSTEM V2.00.421
 Temperature:25.3DEG Humidity:65.0%
 Operators: Test Distance:3.080m [K=1.0000]
 Test Date:2021-08-04 Remarks: PORTER