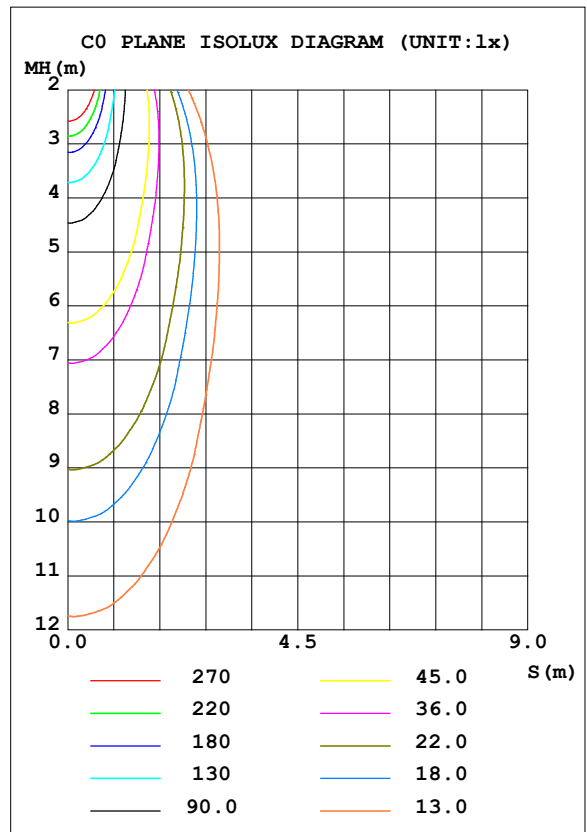
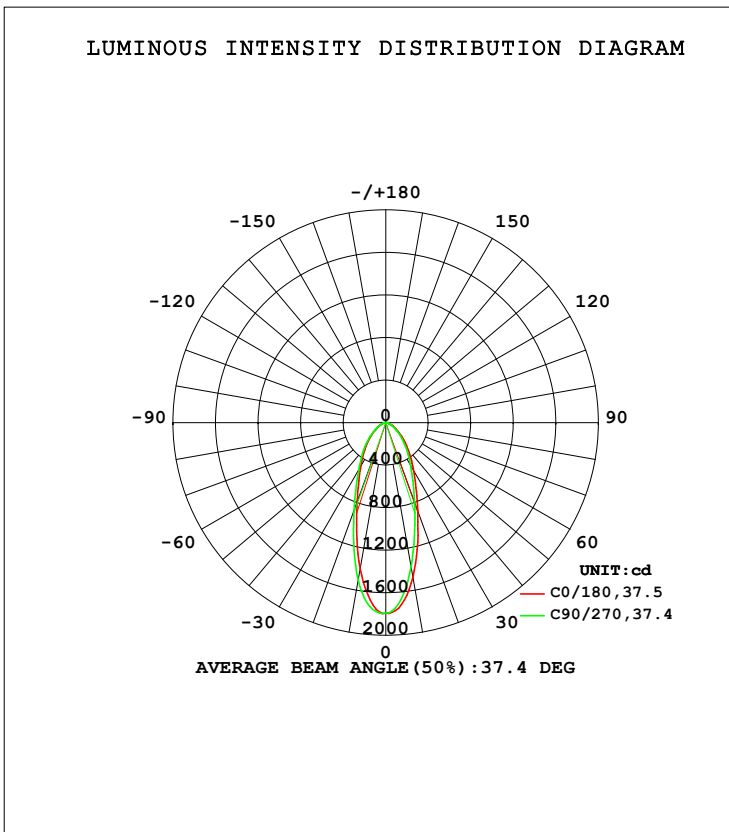


LUMINAIRE PHOTOMETRIC TEST REPORT

Test:U:119.98V I:0.1170A P:13.855W PF:0.9516 Freq:59.98Hz Lamp Flux:1392.96x1 lm		
NAME: LED-6-S15W-5CCT-FG-WH	TYPE:	WEIGHT:
SPEC.:5000K 90	DIM.:	SERIAL No.:
MFR.: Light by Lotus	SUR.:	Shielding Angle:

DATA OF LAMP		PHOTOMETRIC DATA Eff: 100.54 lm/W			
MODEL		I _{max} (cd)	1799	S/MH (C0/180)	0.57
NOMINAL POWER (W)	15	LOR (%)	100.0	S/MH (C90/270)	0.62
RATED VOLTAGE (V)	120	TOTAL FLUX (lm)	1393.0	<input type="checkbox"/> UP, DN (C0-180)	0.0, 49.0
NOMINAL FLUX (lm)	1392.96	CIE CLASS	DIRECT	<input type="checkbox"/> UP, DN (C180-360)	0.0, 51.0
LAMPS INSIDE	1	<input type="checkbox"/> up (%)	0.0	CIBSE SHR NOM	0.50
TEST VOLTAGE (V)	120	<input type="checkbox"/> down (%)	100.0	CIBSE SHR MAX	0.70



C Range: 0 - 360DEG
 C Interval: 22.5DEG
 Test Speed: HIGH
 Temperature: 25.3DEG
 Operators:
 Test Date: 2021-08-04

Range: 0 - 90DEG
 Interval: 1.0DEG
 Test System: EVERFINE GO-SPEX500_V1 SYSTEM V2.00.421
 Humidity: 65.0%
 Test Distance: 3.080m [K=1.0000]
 Remarks: PORTER

ZONAL FLUX DIAGRAM

ZONAL FLUX DIAGRAM:

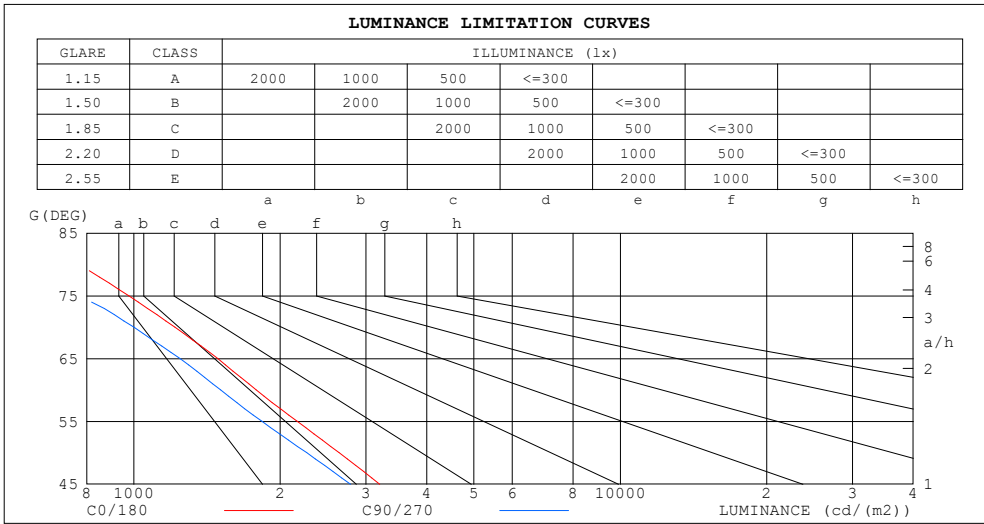
°	C0	C45	C90	C135	C180	C225	C270	C315	°	□ zone	□ total	%lum, lamp
10	1475	1441	1375	1338	1394	1467	1500	1484	0- 10	153.4	153.4	11,11
20	879.7	856.4	797.1	759.2	791.5	844.7	874.4	882.8	10- 20	308.9	462.3	33.2,33.2
30	527.7	511.1	471.5	459.8	472.1	494.4	508.7	521.8	20- 30	294.5	756.8	54.3,54.3
40	327.3	304.4	288.9	292.5	291.2	295.2	314.3	335.9	30- 40	245.4	1002	71.9,71.9
50	188.8	165.8	161.8	170.3	165.8	162.3	180.3	201.6	40- 50	181.5	1184	85,85
60	99.05	84.15	83.76	89.37	86.69	83.23	94.39	106.6	50- 60	114.8	1299	93.2,93.2
70	46.12	38.70	37.98	40.28	39.35	38.46	44.29	49.25	60- 70	63.73	1362	97.8,97.8
80	14.85	10.67	6.954	10.16	11.83	11.53	11.66	15.53	70- 80	26.93	1389	99.7,99.7
90	0.0791	0.0710	0.0764	0.0845	0.1365	0.1191	0.1114	0.1200	80- 90	3.757	1393	100,100
100									90-100			
110									100-110			
120									110-120			
130									120-130			
140									130-140			
150									140-150			
160									150-160			
170									160-170			
180									170-180			
DEG	LUMINOUS INTENSITY:cd									UNIT:lm		

C Range: 0 - 360DEG
 C Interval: 22.5DEG
 Test Speed: HIGH
 Temperature:25.3DEG
 Operators:
 Test Date:2021-08-04

□ Range: 0 - 90DEG
 □ Interval: 1.0DEG
 Test System:EVERFINE GO-SPEX500_V1 SYSTEM V2.00.421
 Humidity:65.0%
 Test Distance:3.080m [K=1.0000]
 Remarks: PORTER

LUMINANCE LIMITATION CURVES

Test:U:119.98V I:0.1170A P:13.855W PF:0.9516 Freq:59.98Hz Lamp Flux:1392.96x1 lm		
NAME: LED-6-S15W-5CCT-FG-WH	TYPE:	WEIGHT:
SPEC.:5000K 90	DIM.:	SERIAL No.:
MFR.: Light by Lotus	SUR.:	Shielding Angle:



LUMINANCE cd/(m2)		
G (DEG)	C0/180	C90/270
85	382	13
80	770	361
75	976	749
70	1214	1000
65	1488	1244
60	1784	1508
55	2166	1835
50	2644	2266
45	3203	2788

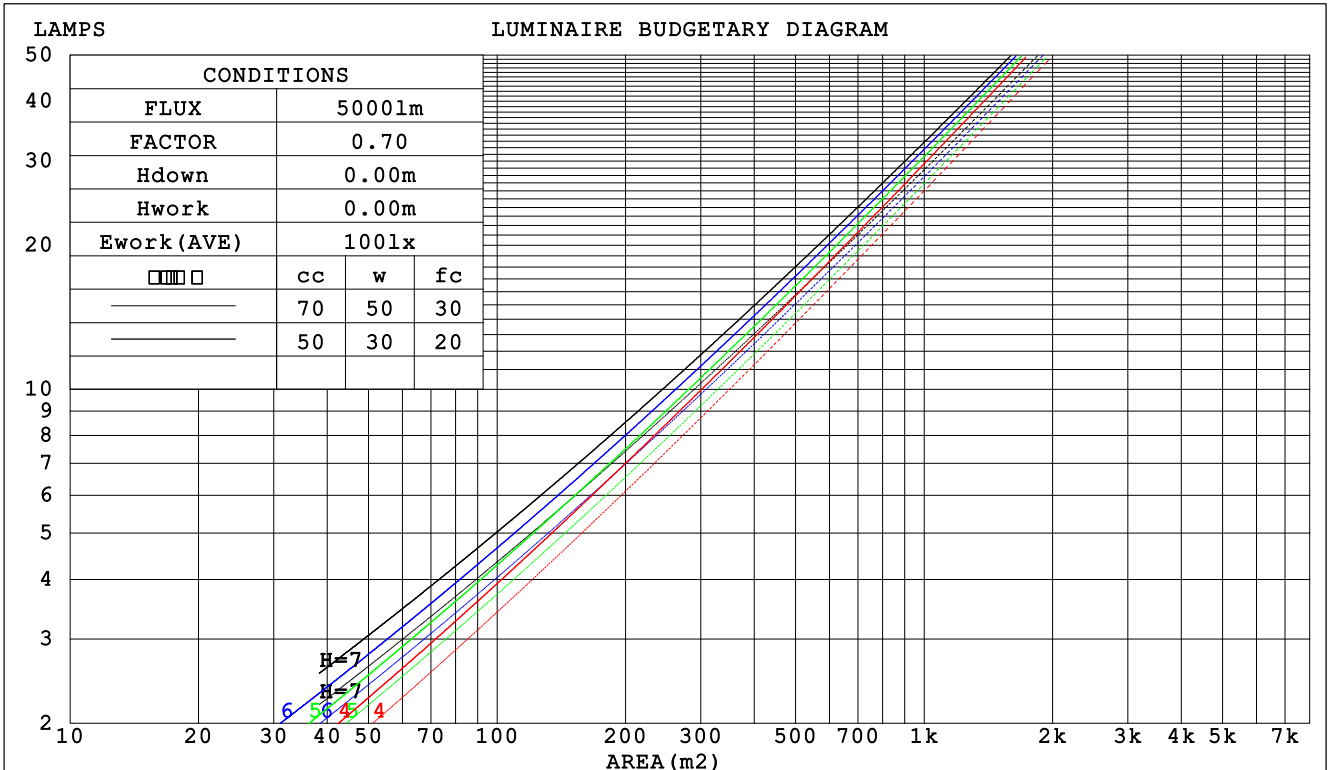
C Range: 0 - 360DEG
 C Interval: 22.5DEG
 Test Speed: HIGH
 Temperature:25.3DEG
 Operators:
 Test Date:2021-08-04

Range: 0 - 90DEG
 Interval: 1.0DEG
 Test System:EVERFINE GO-SPEX500_V1 SYSTEM V2.00.421
 Humidity:65.0%
 Test Distance:3.080m [K=1.0000]
 Remarks: PORTER

CU AND LUMINAIRE BUDGETARY ESTIMATE DIAGRAM

Test:U:119.98V I:0.1170A P:13.855W PF:0.9516 Freq:59.98Hz Lamp Flux:1392.96x1 lm		
NAME: LED-6-S15W-5CCT-FG-WH	TYPE:	WEIGHT:
SPEC.:5000K 90	DIM.:	SERIAL No.:
MFR.: Light by Lotus	SUR.:	Shielding Angle:

□cc	80%			70%			50%			30%			10%			0
□w	50%	30%	10%	50%	30%	10%	50%	30%	10%	50%	30%	10%	50%	30%	10%	0
□fc	20%			20%			20%			20%			20%			0
RCR	RCR:Room Cavity Ratio						Coefficients of Utilization(CU)									
0.0	1.19	1.19	1.19	1.16	1.16	1.16	1.11	1.11	1.11	1.06	1.06	1.06	1.02	1.02	1.02	.00
1.0	1.09	1.06	1.03	1.06	1.04	1.01	1.02	1.00	.98	.99	.97	.95	.95	.94	.92	.91
2.0	.99	.94	.90	.97	.93	.89	.94	.90	.87	.91	.88	.85	.88	.85	.83	.81
3.0	.91	.85	.80	.89	.84	.79	.86	.82	.78	.84	.80	.76	.81	.78	.75	.74
4.0	.83	.77	.72	.82	.76	.71	.80	.74	.70	.78	.73	.69	.76	.72	.69	.67
5.0	.77	.70	.65	.76	.69	.65	.74	.68	.64	.72	.67	.63	.71	.66	.63	.61
6.0	.71	.64	.59	.71	.64	.59	.69	.63	.59	.67	.62	.58	.66	.61	.58	.56
7.0	.67	.60	.55	.66	.59	.55	.64	.59	.54	.63	.58	.54	.62	.57	.54	.52
8.0	.62	.55	.51	.62	.55	.51	.61	.55	.50	.59	.54	.50	.58	.54	.50	.48
9.0	.59	.52	.47	.58	.52	.47	.57	.51	.47	.56	.51	.47	.55	.50	.47	.45
10.0	.55	.49	.44	.55	.49	.44	.54	.48	.44	.53	.48	.44	.52	.47	.44	.42



C Range: 0 - 360DEG
 C Interval: 22.5DEG
 Test Speed: HIGH
 Temperature:25.3DEG
 Operators:
 Test Date:2021-08-04

□ Range: 0 - 90DEG
 □ Interval: 1.0DEG
 Test System:EVERFINE GO-SPEX500_V1 SYSTEM V2.00.421
 Humidity:65.0%
 Test Distance:3.080m [K=1.0000]
 Remarks: PORTER

WEC AND CCEC

Test:U:119.98V I:0.1170A P:13.855W PF:0.9516 Freq:59.98Hz Lamp Flux:1392.96x1 lm		
NAME: LED-6-S15W-5CCT-FG-WH	TYPE:	WEIGHT:
SPEC.:5000K 90	DIM.:	SERIAL No.:
MFR.: Light by Lotus	SUR.:	Shielding Angle:

<input type="checkbox"/> cc	80%	70%	50%	30%	10%	0
<input type="checkbox"/> w	50% 30% 10%	50% 30% 10%	50% 30% 10%	50% 30% 10%	50% 30% 10%	0
<input type="checkbox"/> fc	20%	20%	20%	20%	20%	0
RCR	RCR:Room Cavity Ratio		Wall Exitance Coefficients (WEC)			
0.0						
1.0	.218 .124 .039	.211 .120 .038	.198 .114 .036	.186 .107 .034	.175 .102 .033	
2.0	.210 .115 .035	.204 .112 .035	.193 .107 .033	.183 .102 .032	.173 .098 .031	
3.0	.198 .105 .032	.193 .103 .031	.184 .100 .030	.175 .096 .029	.167 .092 .029	
4.0	.187 .097 .029	.182 .095 .028	.174 .092 .028	.166 .089 .027	.159 .086 .026	
5.0	.176 .090 .026	.172 .088 .026	.165 .086 .025	.158 .083 .025	.151 .081 .024	
6.0	.166 .083 .024	.162 .082 .024	.156 .080 .023	.150 .078 .023	.144 .076 .023	
7.0	.156 .077 .022	.153 .076 .022	.148 .075 .021	.142 .073 .021	.137 .071 .021	
8.0	.148 .072 .020	.145 .071 .020	.140 .070 .020	.135 .069 .020	.131 .067 .020	
9.0	.140 .068 .019	.138 .067 .019	.133 .066 .019	.129 .065 .018	.125 .063 .018	
10.0	.133 .064 .018	.131 .063 .018	.127 .062 .018	.123 .061 .017	.119 .060 .017	

<input type="checkbox"/> cc	80%	70%	50%	30%	10%	0
<input type="checkbox"/> w	50% 30% 10%	50% 30% 10%	50% 30% 10%	50% 30% 10%	50% 30% 10%	0
<input type="checkbox"/> fc	20%	20%	20%	20%	20%	0
RCR	RCR:Room Cavity Ratio		Ceiling Cavity Exitance Coefficients (CCEC)			
0.0	.190 .190 .190	.163 .163 .163	.111 .111 .111	.064 .064 .064	.020 .020 .020	
1.0	.174 .157 .142	.149 .135 .122	.102 .093 .084	.059 .054 .049	.019 .017 .016	
2.0	.161 .132 .108	.138 .114 .093	.095 .079 .065	.055 .046 .038	.018 .015 .012	
3.0	.151 .114 .084	.129 .098 .073	.089 .068 .051	.051 .040 .030	.016 .013 .010	
4.0	.141 .100 .068	.121 .086 .059	.083 .060 .041	.048 .035 .024	.016 .011 .008	
5.0	.133 .088 .055	.114 .076 .048	.079 .053 .034	.046 .031 .020	.015 .010 .007	
6.0	.126 .079 .046	.108 .069 .040	.075 .048 .028	.043 .028 .017	.014 .009 .006	
7.0	.119 .072 .039	.103 .063 .034	.071 .044 .024	.041 .026 .014	.013 .008 .005	
8.0	.113 .066 .034	.098 .057 .029	.068 .040 .021	.039 .024 .012	.013 .008 .004	
9.0	.108 .061 .029	.093 .053 .025	.064 .037 .018	.038 .022 .011	.012 .007 .004	
10.0	.103 .057 .026	.089 .049 .022	.062 .035 .016	.036 .020 .010	.012 .007 .003	

C Range: 0 - 360DEG
 C Interval: 22.5DEG
 Test Speed: HIGH
 Temperature:25.3DEG
 Operators:
 Test Date:2021-08-04

Range: 0 - 90DEG
 Interval: 1.0DEG
 Test System:EVERFINE GO-SPEX500_V1 SYSTEM V2.00.421
 Humidity:65.0%
 Test Distance:3.080m [K=1.0000]
 Remarks: PORTER

UGR(Unified Glare Rating) Table

Test:U:119.98V I:0.1170A P:13.855W PF:0.9516 Freq:59.98Hz Lamp Flux:1392.96x1 lm		
NAME: LED-6-S15W-5CCT-FG-WH	TYPE:	WEIGHT:
SPEC.:5000K 90	DIM.:	SERIAL No.:
MFR.: Light by Lotus	SUR.:	Shielding Angle:

ceiling/cavity	0.7	0.7	0.5	0.5	0.3	0.7	0.7	0.5	0.5	0.3
walls	0.5	0.3	0.5	0.3	0.3	0.5	0.3	0.5	0.3	0.3
working plane	0.2	0.2	0.2	0.2	0.2	0.2	0.2	0.2	0.2	0.2
Room dimensions	Viewed crosswise					Viewed endwise				
x = 2H y = 2H	12.6	13.7	12.8	13.9	14.1	12.0	13.1	12.2	13.3	13.5
3H	13.2	14.2	13.5	14.5	14.7	12.5	13.6	12.8	13.8	14.0
4H	13.4	14.4	13.7	14.6	14.8	12.6	13.6	12.9	13.9	14.1
6H	13.5	14.4	13.8	14.7	14.9	12.6	13.6	12.9	13.8	14.1
8H	13.5	14.4	13.8	14.6	14.9	12.6	13.5	12.9	13.8	14.0
12H	13.5	14.3	13.8	14.6	14.9	12.5	13.4	12.9	13.7	14.0
4H 2H	12.7	13.7	13.0	14.0	14.2	12.2	13.2	12.5	13.4	13.7
3H	13.5	14.3	13.8	14.6	14.9	12.9	13.7	13.2	14.0	14.3
4H	13.7	14.5	14.1	14.8	15.1	13.1	13.9	13.4	14.2	14.5
6H	13.9	14.6	14.3	14.9	15.3	13.1	13.8	13.5	14.1	14.5
8H	13.9	14.6	14.3	14.9	15.3	13.1	13.7	13.5	14.1	14.4
12H	13.9	14.5	14.3	14.9	15.3	13.0	13.6	13.4	14.0	14.4
8H 4H	13.7	14.4	14.1	14.7	15.1	13.1	13.7	13.5	14.1	14.5
6H	14.0	14.5	14.4	14.9	15.3	13.2	13.7	13.6	14.1	14.5
8H	14.0	14.5	14.5	14.9	15.4	13.2	13.6	13.6	14.0	14.5
12H	14.0	14.4	14.5	14.9	15.3	13.1	13.5	13.6	13.9	14.4
12H 4H	13.7	14.3	14.1	14.7	15.1	13.1	13.7	13.5	14.0	14.4
6H	13.9	14.4	14.4	14.8	15.3	13.2	13.6	13.6	14.0	14.5
8H	14.0	14.4	14.5	14.9	15.3	13.1	13.5	13.6	14.0	14.4
Variations with the observer position at spacings:										
S = 1.0H	+ 0.6 / - 0.8					+ 0.7 / - 1.0				
1.5H	+ 0.6 / - 0.6					+ 0.7 / - 0.6				
2.0H	+ 1.5 / - 1.2					+ 1.5 / - 1.3				

CIE Pub.117, 1393 lm Total Lamp Luminous Flux Correct (8log(F/F0) = 1.2)
 Area: 0.111111 m2

C Range: 0 - 360DEG
 C Interval: 22.5DEG
 Test Speed: HIGH
 Temperature:25.3DEG
 Operators:
 Test Date:2021-08-04

Range: 0 - 90DEG
 Interval: 1.0DEG
 Test System:EVERFINE GO-SPEX500_V1 SYSTEM V2.00.421
 Humidity:65.0%
 Test Distance:3.080m [K=1.0000]
 Remarks: PORTER

UTILIZATION FACTORS TABLE

Test:U:119.98V I:0.1170A P:13.855W PF:0.9516 Freq:59.98Hz Lamp Flux:1392.96x1 lm		
NAME: LED-6-S15W-5CCT-FG-WH	TYPE:	WEIGHT:
SPEC.:5000K 90	DIM.:	SERIAL No.:
MFR.: Light by Lotus	SUR.:	Shielding Angle:

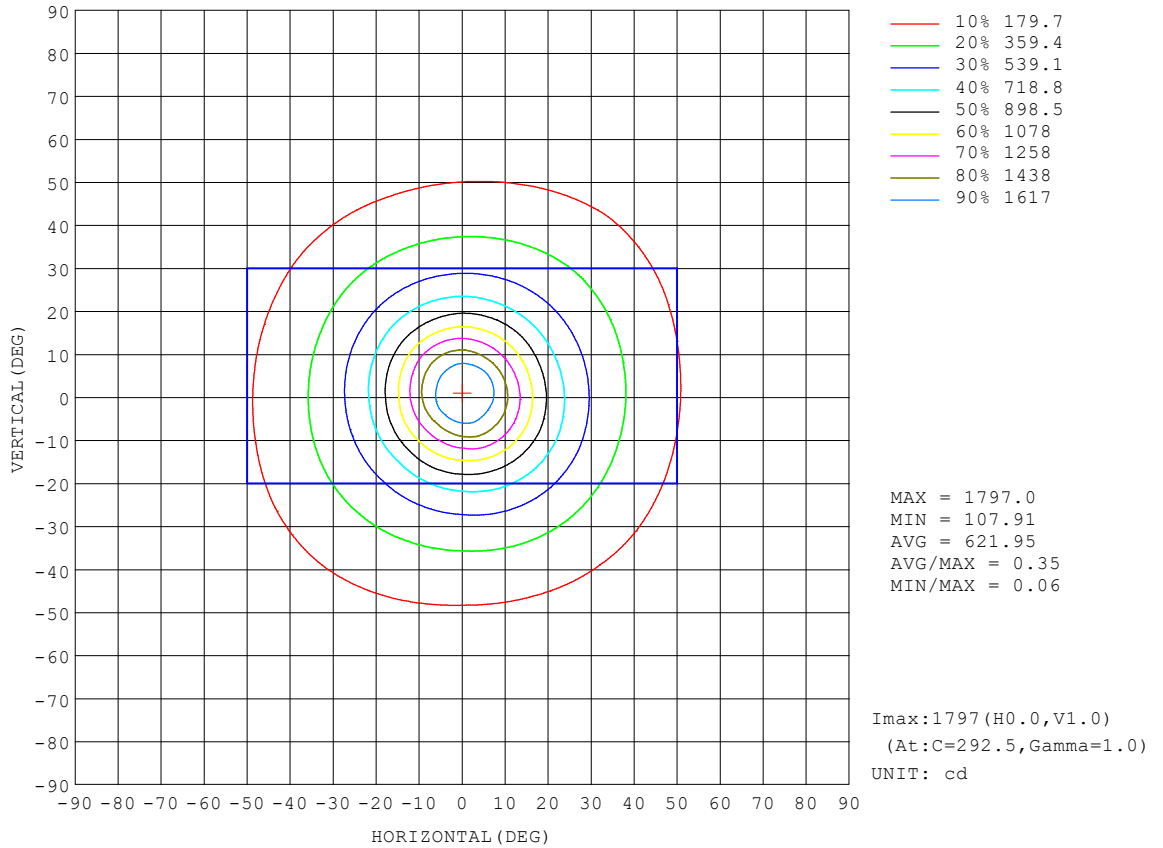
REFLECTANCE										
Ceiling	0.8	0.8	0.8	0.7	0.7	0.7	0.5	0.5	0.5	0
Walls	0.7	0.5	0.3	0.7	0.5	0.3	0.7	0.5	0.3	0
Working plane	0.2	0.2	0.2	0.2	0.2	0.2	0.2	0.2	0.2	0
ROOM INDEX	UTILIZATION FACTORS (PERCENT) $k(RI) \times RCR = 5$									
k = 0.60	74	65	60	73	65	60	72	65	60	55
0.80	83	75	69	82	74	69	81	73	69	64
1.00	90	82	77	89	81	76	87	82	76	70
1.25	95	88	83	94	87	82	92	86	82	76
1.50	99	92	87	97	91	87	95	90	86	80
2.00	103	98	93	102	96	92	99	94	91	85
2.50	106	101	96	104	99	96	101	97	94	87
3.00	108	104	100	106	102	99	103	99	96	89
4.00	111	107	104	109	105	103	105	102	100	92
5.00	113	109	107	110	107	105	106	104	102	94
ROOM INDEX	UF(total)									Direct
According to DIN EN 13032-2 2004			Suspended				SHRNOM = 1.25			

C Range: 0 - 360DEG
 C Interval: 22.5DEG
 Test Speed: HIGH
 Temperature:25.3DEG
 Operators:
 Test Date:2021-08-04

Range: 0 - 90DEG
 Interval: 1.0DEG
 Test System:EVERFINE GO-SPEX500_V1 SYSTEM V2.00.421
 Humidity:65.0%
 Test Distance:3.080m [K=1.0000]
 Remarks: PORTER

ISOCANDELA DIAGRAM

Test:U:119.98V I:0.1170A P:13.855W PF:0.9516 Freq:59.98Hz Lamp Flux:1392.96x1 lm		
NAME: LED-6-S15W-5CCT-FG-WH	TYPE:	WEIGHT:
SPEC.:5000K 90	DIM.:	SERIAL No.:
MFR.: Light by Lotus	SUR.:	Shielding Angle:

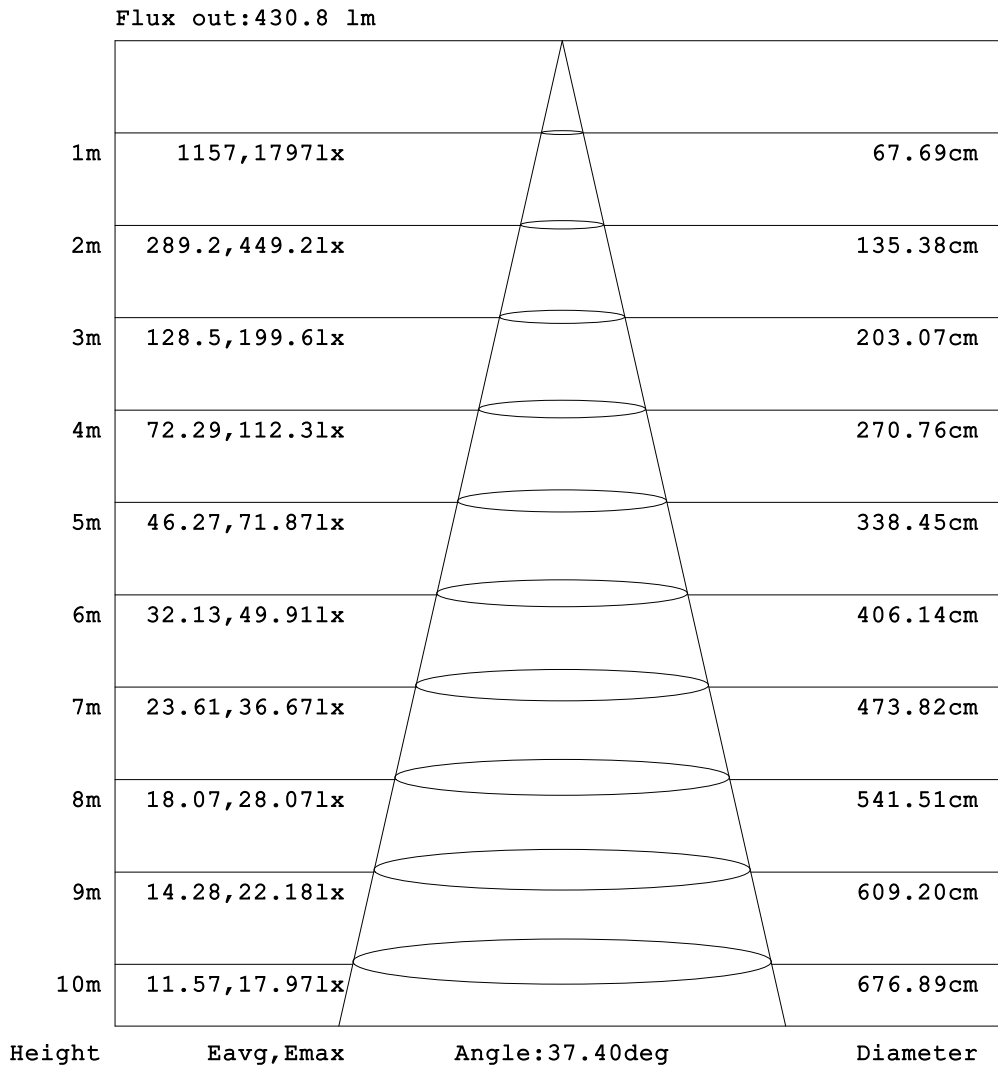


C Range: 0 - 360DEG
 C Interval: 22.5DEG
 Test Speed: HIGH
 Temperature:25.3DEG
 Operators:
 Test Date:2021-08-04

Range: 0 - 90DEG
 Interval: 1.0DEG
 Test System:EVERFINE GO-SPEX500_V1 SYSTEM V2.00.421
 Humidity:65.0%
 Test Distance:3.080m [K=1.0000]
 Remarks: PORTER

AAI Figure

Test:U:119.98V I:0.1170A P:13.855W PF:0.9516 Freq:59.98Hz Lamp Flux:1392.96x1 lm		
NAME: LED-6-S15W-5CCT-FG-WH	TYPE:	WEIGHT:
SPEC.:5000K 90	DIM.:	SERIAL No.:
MFR.: Light by Lotus	SUR.:	Shielding Angle:



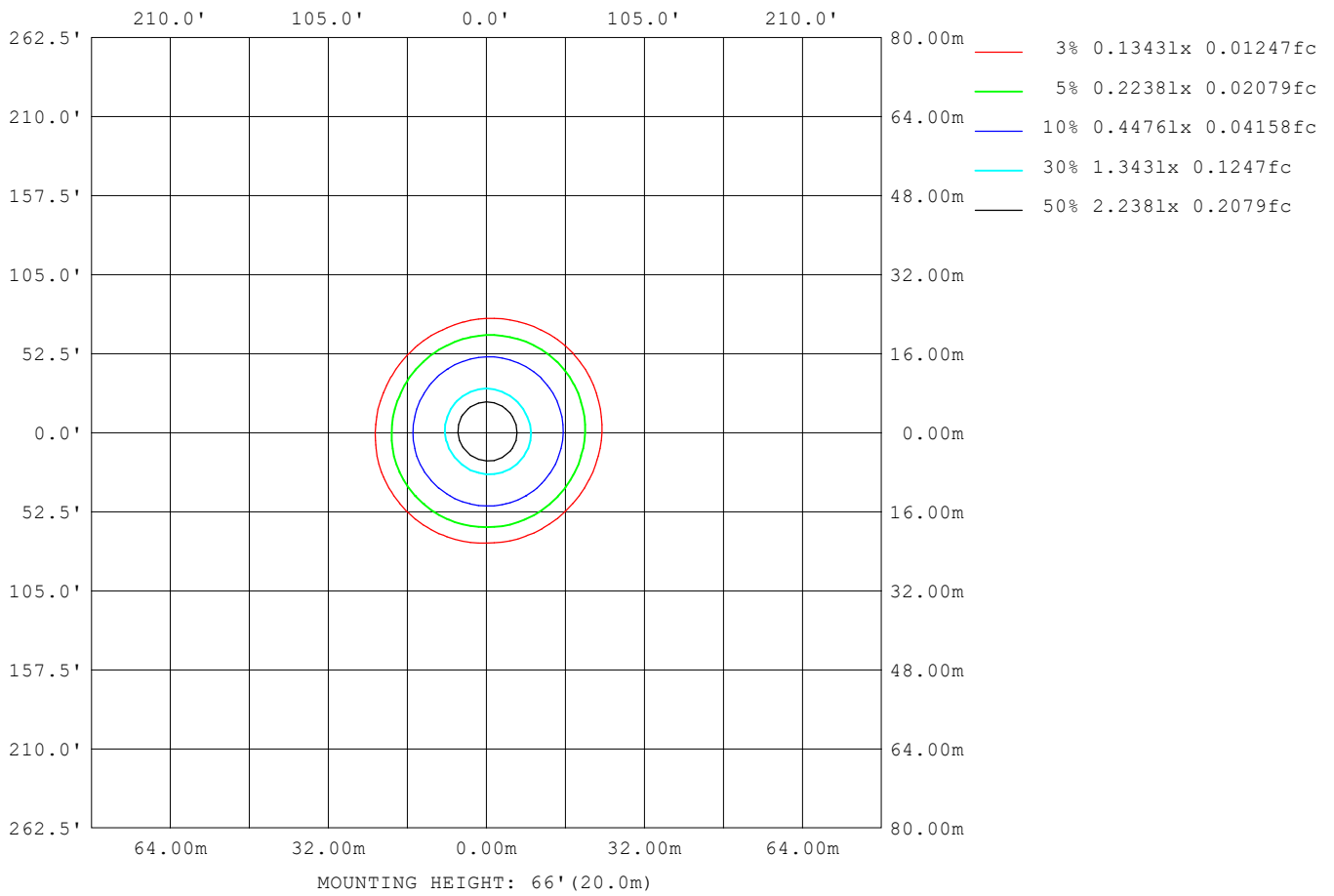
Note:The Curves indicate the illuminated area and the average illumination when the luminaire is at different distance.

C Range: 0 - 360DEG
 C Interval: 22.5DEG
 Test Speed: HIGH
 Temperature:25.3DEG
 Operators:
 Test Date:2021-08-04

Range: 0 - 90DEG
 Interval: 1.0DEG
 Test System:EVERFINE GO-SPEX500_V1 SYSTEM V2.00.421
 Humidity:65.0%
 Test Distance:3.080m [K=1.0000]
 Remarks: PORTER

ISOLUX DIAGRAM

Test:U:119.98V I:0.1170A P:13.855W PF:0.9516 Freq:59.98Hz Lamp Flux:1392.96x1 lm		
NAME: LED-6-S15W-5CCT-FG-WH	TYPE:	WEIGHT:
SPEC.:5000K 90	DIM.:	SERIAL No.:
MFR.: Light by Lotus	SUR.:	Shielding Angle:



C Range: 0 - 360DEG
 C Interval: 22.5DEG
 Test Speed: HIGH
 Temperature:25.3DEG
 Operators:
 Test Date:2021-08-04

Range: 0 - 90DEG
 Interval: 1.0DEG
 Test System:EVERFINE GO-SPEX500_V1 SYSTEM V2.00.421
 Humidity:65.0%
 Test Distance:3.080m [K=1.0000]
 Remarks: PORTER

LED Avg.L Report

Test:U:119.98V I:0.1170A P:13.855W PF:0.9516 Freq:59.98Hz Lamp Flux:1392.96x1 lm		
NAME: LED-6-S15W-5CCT-FG-WH	TYPE:	WEIGHT:
SPEC.:5000K 90	DIM.:	SERIAL No.:
MFR.: Light by Lotus	SUR.:	Shielding Angle:

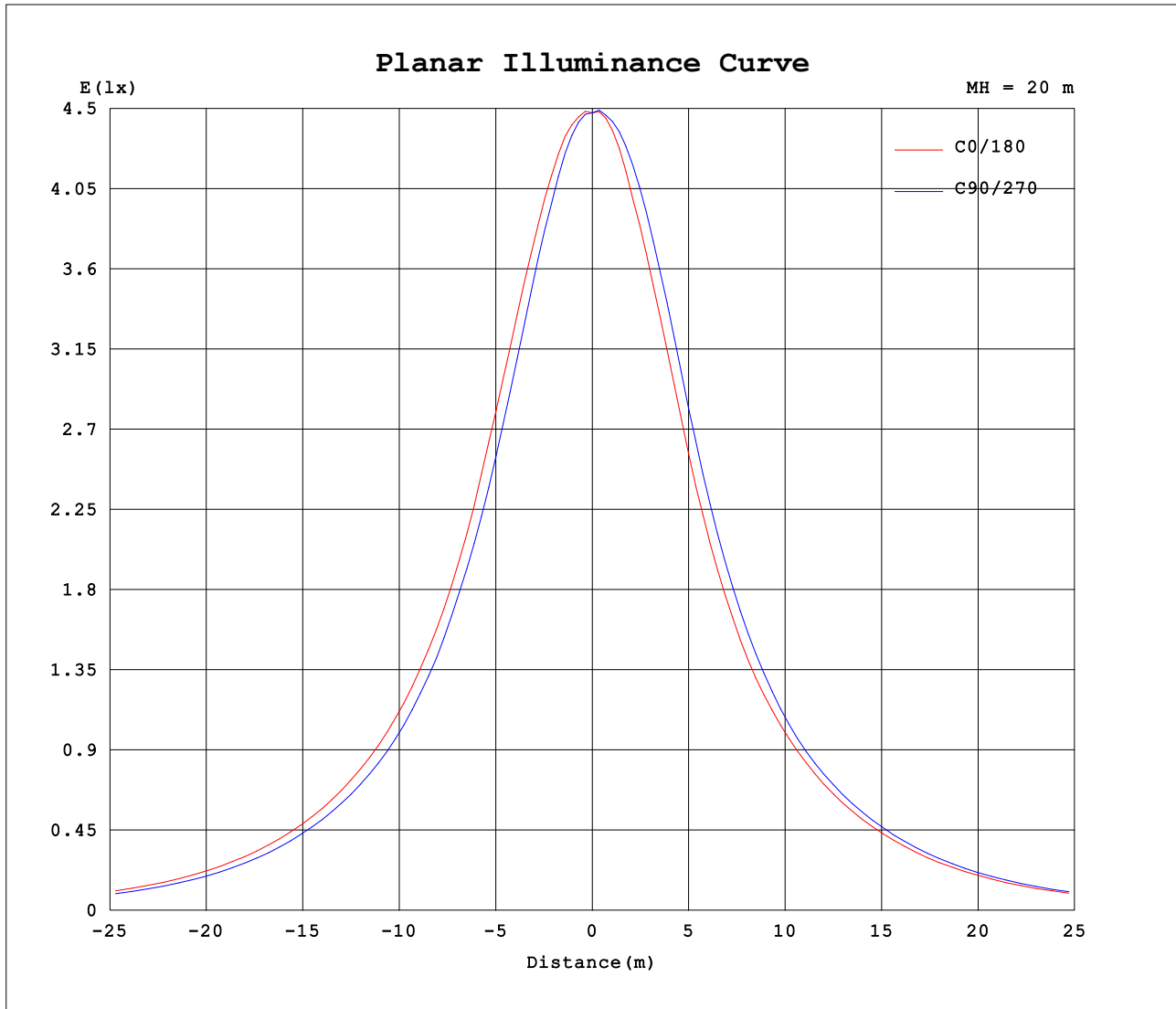
AvgL	cd/m2
L_0~180 (65) av	1390
L_0~180 (75) av	895
L_0~180 (85) av	333
L_90~270 (65) av	1332
L_90~270 (75) av	845
L_90~270 (85) av	73
L_45 (65) av	1355
L_45 (75) av	874
L_45 (85) av	189

Standard: GB/T 29293-2012

C Range: 0 - 360DEG
 C Interval: 22.5DEG
 Test Speed: HIGH
 Temperature:25.3DEG
 Operators:
 Test Date:2021-08-04

Range: 0 - 90DEG
 Interval: 1.0DEG
 Test System:EVERFINE GO-SPEX500_V1 SYSTEM V2.00.421
 Humidity:65.0%
 Test Distance:3.080m [K=1.0000]
 Remarks: PORTER

Planar Illuminance Curve



C Range: 0 - 360DEG
 C Interval: 22.5DEG
 Test Speed: HIGH
 Temperature: 25.3DEG
 Operators:
 Test Date: 2021-08-04

Range: 0 - 90DEG
 Interval: 1.0DEG
 Test System: EVERFINE GO-SPEX500_V1 SYSTEM V2.00.421
 Humidity: 65.0%
 Test Distance: 3.080m [K=1.0000]
 Remarks: PORTER

LUMINOUS DISTRIBUTION INTENSITY DATA

Test:U:119.98V I:0.1170A P:13.855W PF:0.9516 Freq:59.98Hz Lamp Flux:1392.96x1 lm		
NAME: LED-6-S15W-5CCT-FG-WH	TYPE:	WEIGHT:
SPEC.:5000K 90	DIM.:	SERIAL No.:
MFR.: Light by Lotus	SUR.:	Shielding Angle:

Table--1

UNIT: cd

C (DEG)\ □ (DEG)	0	22.5	45	67.5	90	112.5	135	157.5	180	202.5	225	247.5	270	292.5	315	337.5			
0	1790	1790	1790	1790	1790	1790	1790	1790	1790	1790	1790	1790	1790	1790	1790	1790			
5	1717	1693	1680	1678	1667	1659	1660	1671	1678	1680	1696	1715	1734	1749	1758	1736			
10	1475	1461	1441	1422	1375	1345	1338	1362	1394	1429	1467	1494	1500	1487	1484	1480			
15	1166	1161	1133	1095	1054	1043	1035	1047	1059	1098	1142	1160	1171	1164	1160	1159			
20	880	880	856	829	797	777	759	773	792	822	845	857	874	879	883	871			
25	675	682	664	638	605	586	580	591	603	625	643	655	660	657	658	664			
30	528	526	511	492	471	463	460	466	472	482	494	501	509	516	522	525			
35	417	407	397	386	371	367	368	373	373	375	384	392	402	410	418	418			
40	327	314	304	297	289	290	292	295	291	288	295	303	314	326	336	334			
45	252	238	227	223	219	223	227	228	223	218	222	229	241	254	264	262			
50	189	176	166	162	162	167	170	171	166	161	162	168	180	192	202	198			
55	138	127	119	116	117	122	124	125	121	117	117	121	132	141	148	146			
60	99.1	90.9	84.2	82.3	83.8	87.3	89.4	89.6	86.7	83.7	83.2	86.6	94.4	101	107	104			
65	69.8	63.9	59.0	57.6	58.4	60.9	62.1	62.5	60.7	58.8	58.8	61.1	66.7	71.6	74.6	73.4			
70	46.1	42.1	38.7	37.7	38.0	39.6	40.3	40.4	39.4	38.1	38.5	40.4	44.3	47.6	49.2	48.3			
75	28.1	25.7	23.5	22.0	21.5	22.6	23.7	23.9	23.4	22.9	23.4	24.6	27.0	29.0	30.0	29.3			
80	14.8	13.5	10.7	8.19	6.95	7.71	10.2	11.8	11.8	11.9	11.5	11.0	11.7	13.0	15.5	15.4			
85	3.70	3.74	1.31	0.11	0.12	0.10	0.98	2.36	2.75	2.87	1.80	1.22	1.28	1.80	3.24	5.06			
90	0.08	0.08	0.07	0.07	0.08	0.08	0.08	0.09	0.14	0.13	0.12	0.11	0.11	0.11	0.12	0.12			

C Range: 0 - 360DEG
C Interval: 22.5DEG
Test Speed: HIGH
Temperature:25.3DEG
Operators:
Test Date:2021-08-04

□ Range: 0 - 90DEG
□ Interval: 1.0DEG
Test System:EVERFINE GO-SPEX500_V1 SYSTEM V2.00.421
Humidity:65.0%
Test Distance:3.080m [K=1.0000]
Remarks: PORTER