



AD-107T

Ultra Slim LED Puck Light 2.2W

Project: _____

Location: _____

Qty: _____

Notes: _____

DESCRIPTION

Slim to size and bright in lumen output
 With a width of 1/4", the puck light can be recess or surface mounted
 Easily swap the trim color with the magnetic technology engineered into the pucks
 White, Black and Brushed Nickel trims included
 White Surface Mount Bracket Included
 Connect the puck lights to the power supply using a 6-port hub or /
 and male and female connectors on every puck for daisy chaining
 Puck lights can be purchased in single packs or
 the 12V version could be in three packs that include a transformer

FEATURES & BENEFITS

Fast & Easy to install - save on labor. CRI 90+ for true color rendering

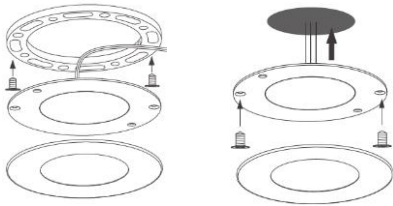
DIMENSIONS ID 2 1/4" OD 3"



INSTALLATION

1/4" Thin Surface Mounted

1/8" Thin Recessed Mounted



CONNECTION

Puck Lights should be connected in parallel to the power supply.
 Observe the power limitations. A 12W driver could power up to 5 pucks

3 Pack Option for the 12V version only



Included: 3 Pucks with WH, BK & BN Trims, Cables and 6 Port Hub
 Plug-in Driver 120VAC 12W Non Dimmable 12V DC output

ORDERING GUIDE

	CCT	Input Voltage	Packaging
AD-107T-3K	3000K	12 V DC	single
AD-107T-4K	4000K	12 V DC	single
AD-107T-3K-24V	3000K	24 V DC	single
AD-107T-4K-24V	4000K	24 V DC	single
3P-AD-107T-3K	3000K	12 V DC	3 pack
3P-AD-107T-4K	4000K	12 V DC	3 pack

SPECIFICATION	
Applications	Undercabinet, Cove, Hospitality, Retail Lighting
Energy Used	2.2 W
Color Temperature (K)	3000 4000
Light Output (lm)	150 170
Halogen Equivalent	15 W
Beam Angle	120°
CRI	90 +
Input	12 V DC / 24V DC
Dimming	Plug-in Driver not Dimmable
	Hard Wired Driver TRIAC Dimmable 10% - 100%
Approved Location	Damp Locations
Ambient Temperature	-4°F (-20°C) to +104°F (+40°C)
Projected Life	70% Light Output at 50,000 Hours
Certification	cETLus
Warranty	3 Year

3 Trims and White Surface Mount Bracket Included



Optional **Wall Wash (Eyelid) Trims** - order as adder



WWT-WH-107

WWT-BK-107

WWT-BN-107

ACCESSORIES

Sold Separately



Hard Wired Driver Triac Dimmable Input 120V AC
[12V model # HBL024-120-12-D](#)
[24V model # HBL024-120-24-D](#)

Connect Up To 10 Puck Lights To This Driver



[Plug-In Driver model # WLS-PD30LU-24](#)

Not Dimmable Input 120V AC output 12V DC 12W
 Connect Up To 5 Puck Lights To This Driver



6-Port Hub model # **AD-107THB1**



[Extension Cable 6 ft model # PEX6](#)



Surface Mount Brackets
 Black model # **107BP-BK**, Brushed Nickel model # **107BP-BN**