



LBL-MC-280-24V-8MM-16FT-IP20

Micro Chip LED Strip 24V 3W/ft 16ft High Efficiency IP20

Project: _____

Location: _____

Model #: _____ Qty: _____

Notes: _____

DESCRIPTION

High Efficiency Micro Chip LED Tape Light 24V for dry locations
 Easy to install and low maintenance
 Double sided adhesive 3M tape and wires on both ends

APPLICATIONS

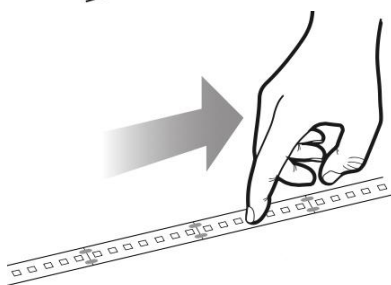
Cove and decorative lighting, path and contour marking
 Undercabinet and valance use

INSTALLATION INSTRUCTIONS

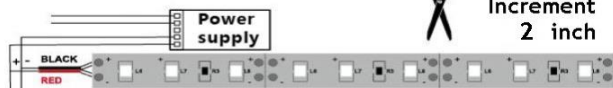
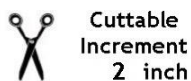
1. Remove backing paper to reveal adhesive tape



2. Press LED tape firmly onto clean smooth surface that adsorbs heat, such as metal or glass. Start at one end and gradually move along surface, making sure tape is smooth and not creased



3. Cut on trim marks



24V DC

WARNING

LED tape gets hot. Mounting firmly and securely on smooth and thermo conductive surface such as metal or glass is critical for proper thermal management and long life.

Not following these instructions voids the warranty

ORDERING GUIDE

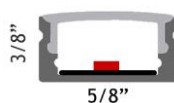
2700K	LBL-MC-280-24V-8MM-27K-16FT-IP20
3000K	LBL-MC-280-24V-8MM-30K-16FT-IP20
4000K	LBL-MC-280-24V-8MM-40K-16FT-IP20

SPECIFICATION (tolerance +/- 10%)

Applications	Undercabinet, Cove, Valance, Decorative
Color Temperature (K)	2700 3000 4000
Power	3 W/ft
Efficiency	135 lm/W
Light output	400 lm/ft
Length per roll	16.4 ft / 5 meters
Maximum Length	16.4 ft / 5 meters
Width	5/16" / 8 mm
Power per Max Length	50 W
Lumen per Max Length	6,500 lm
Beam Angle	180°
CRI	80
Input	24V DC
Dimmable	Yes
LED Operation Type	Constant Voltage
IP Grade	IP 20
Approved Location	Indoor / Dry Location
Ambient Temperature	-4°F (-20°C) to +104°F (+40°C)
Cuttable Increment	2"
LEDs density	280 LEDs / meter
Adhesive Tape Type	3M 300SE
Projected Life	70% Light Output at 20,000 Hours
Certification	cETLus
Warranty	3 Year

ACCESSORIES

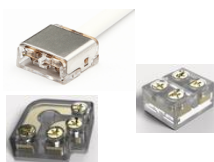
Sold Separately



Aluminum Channel 3.3 ft (1 m) long
 Silver with white diffuser model # **XC610**
 Black with black diffuser model # **XC610-BK**



Strip Connector 8mm no wires model # **LCS-0-8MM**
 Single Connector with 6" wire model # **LCS-1-8MM**
 Two Connectors with 6" wire model # **LCS-2-8MM**



[Tape to Wire Straight Screw Connector # SC-8-10-TW](#)
[Tape to Tape Straight Screw Connector # SC-8-10-TT-1](#)
[Tape to Tape 90° L-shape Screw Connector # SC-8-10-TT-9](#)

Note: All connectors fit inside the channel

Lotus LED Lights USA

250 H Street # 301, Blaine WA 98230 tel 360-200-5500
 Hainesport NJ, Naples FL, Vancouver WA

www.LotusLEDLights.com

mailing addresses
 warehouses

Lotus LED Lights CANADA

1080 Cliveden Ave # 6, Delta BC V3M 6J6 tel 604-538-3090
 Delta BC & Mississauga ON