



Project: _____

Location: _____

Qty: _____

Notes: _____

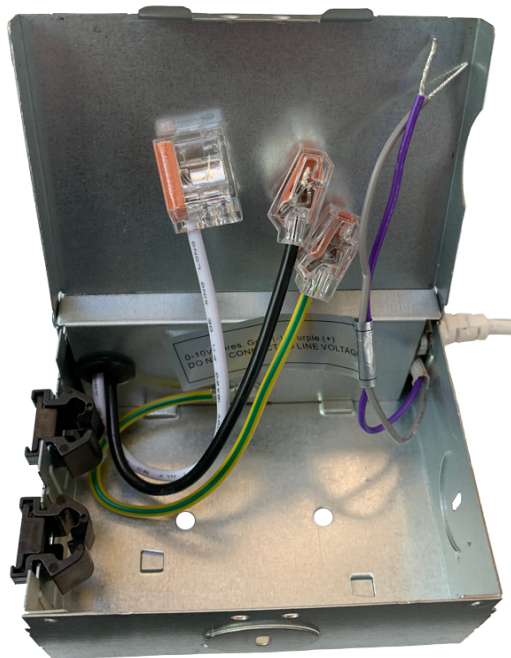
DESCRIPTION

120-347V Input Driver 0-10V Dimmable for Lotus LED Lights Models from 17W to 20W
Output max 38 V DC, Constant Current 460 mA, PF > 0.95
Connection box wire capacity: Maximum of 5 No 12 AWG or 8 No 14 AWG

DIMENSIONS: 3 1/2" x 3 1/2" x 1 1/2"

COMPATIBLE FIXTURES

LL6R
LL6S
LRG6-HO
LRG6-HO-6RSL

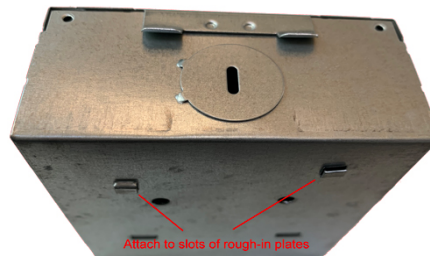


CABLE CONNECTORS

2 knock-outs 7/8"
2 Romex quick connectors

MOUNTING

on Lotus **FRP** plates
on Lotus **RIP** plates
directly on joist



ORDERING GUIDE
cat # **LLL-LD2050T**

Input: White (Neutral) & Black (Hot) wires with quick connectors. Connect to 120V - 347V AC according to the Dimmer Manufacturer's Instructions.

Output: Plastic FT4 / CMR rated cable with screw-in connector. Connect to compatible Lotus LED fixture from the list above

0-10V control wires: Grey (-) and Purple (+). Connect to dimming or control system 0-10V only. **DO NOT CONNECT TO LINE VOLTAGE.**
If you short the Grey and Purple wires the fixture would be dimmed to zero.

Warning: This driver is UL / cUL certified to be used only with Lotus LED Lights fixtures.
Connecting it to any other manufacturer's fixtures will void certification and warranty and may cause overheating and fire.