



# TP120-347-RT9.5-C-DIM-G1-ES

## 10" Round Commercial 3 CCT & 3 Wattage Selectable

Project: \_\_\_\_\_

Location: \_\_\_\_\_

Trim: \_\_\_\_\_ Qty: \_\_\_\_\_

Notes: \_\_\_\_\_

### DESCRIPTION

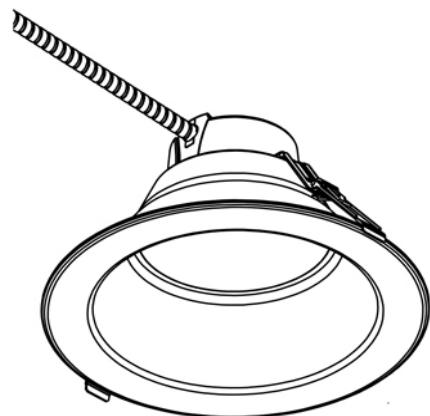
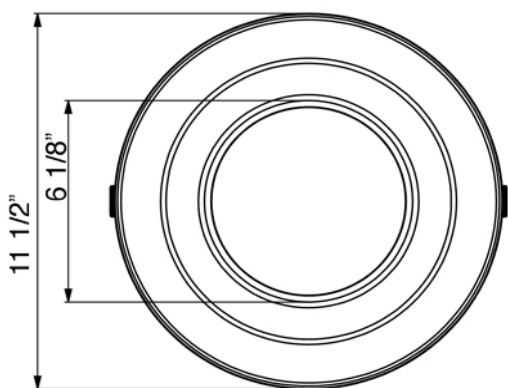
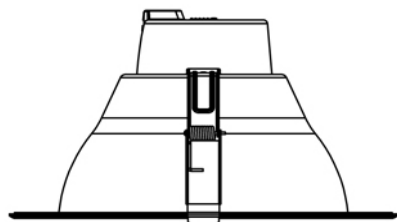
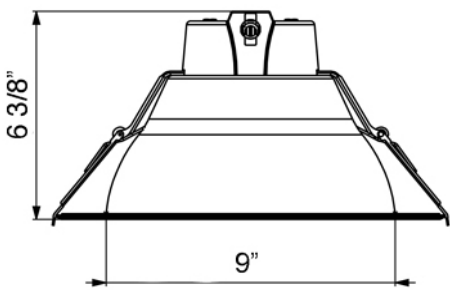
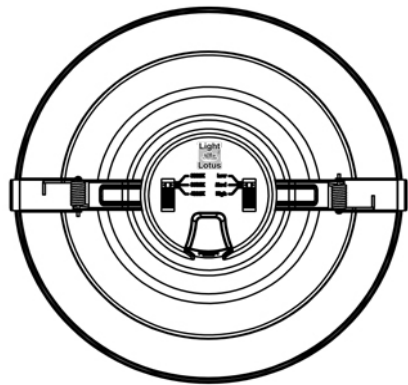
All in one solution 10" round recessed commercial grade LED fixture  
Perfect for hospitality, shopping mall & retail, office, exterior soffit, etc.

### FEATURES & BENEFITS

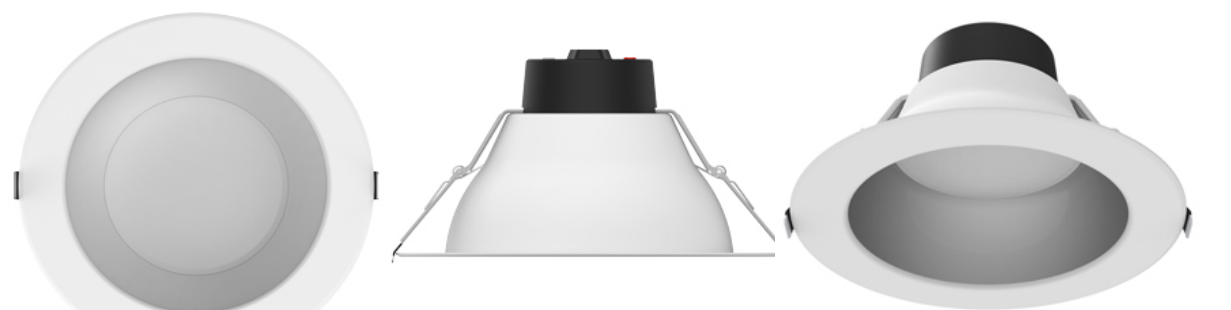
- User selectable 3 light colors & 3 power options
- Universal voltage 120V-347V input
- 0-10V Dimmable 5%-100%
- CRI 90+ for true color rendering
- Type IC, Wet location & Air-tight
- Regressed optics with low glare
- Suitable for new construction and retrofit applications

SPECIFICATION	
Applications	Commercial Recessed Ceiling
Power Levels (W)	20   25   32
Light Output (lm)	2000   2500   3000
Color Temperature (K)	3CCT: 3000K - 3500K - 4000K
Beam Angle	92°
CRI	90 +
Input	120V-347V AC 50/60 Hz
Dimming	0 - 10V
Approved Location	Insulated Ceiling & Wet Locations
Air Tight	Yes
Ambient Temperature	-4°F (-20°C) to +104°F (+40°C)
Projected Life	70% Light Output at 50,000 Hours
Certification	cETLus, Energy Star, T24
Warranty	5 Year

**DIMENSIONS** ID 9" OD 11 1/2" Regressed 2 1/4"  
Cut Out 9" to 10 1/2"



### Trim Options



[Matte White](#)

[Alzak \(White Trims & Matte Silver Reflector\)](#)

### ACCESSORIES

Sold Separately



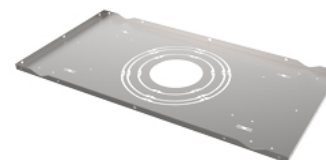
Black trim cover model # [LBL-10CRT-B](#)



Silver trim cover model # [LBL-10CRT-S](#)



Goof Ring White OD 14 3/16" model # [LBL-10CGR-W](#)



New Construction Mounting Plate for T-bar Ceiling  
model # [LBL-MP-C4-10-TBAR](#)

Please note that junction box is not included

### ORDERING GUIDE

Trim / Reflector

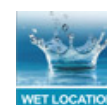
[TP120-347-RT9.9-C-DIM-G1-ES](#)

[White](#)

[TP120-347-RT9.5-C-DIM-G1-ES-AZ](#)

[Alzak](#)

### COMPLIANCE



Type IC  
Air-Tight

Lotus LED Lights USA

250 H Street # 301, Blaine WA 98230 tel 360-200-5500  
Hainesport NJ, Naples FL, Vancouver WA

[www.LotusLEDLights.com](http://www.LotusLEDLights.com)

mailing addresses  
warehouses

Lotus LED Lights CANADA

702 Chester Rd, Delta BC V3M 6J1 tel 604-538-3090  
Delta BC & Mississauga ON